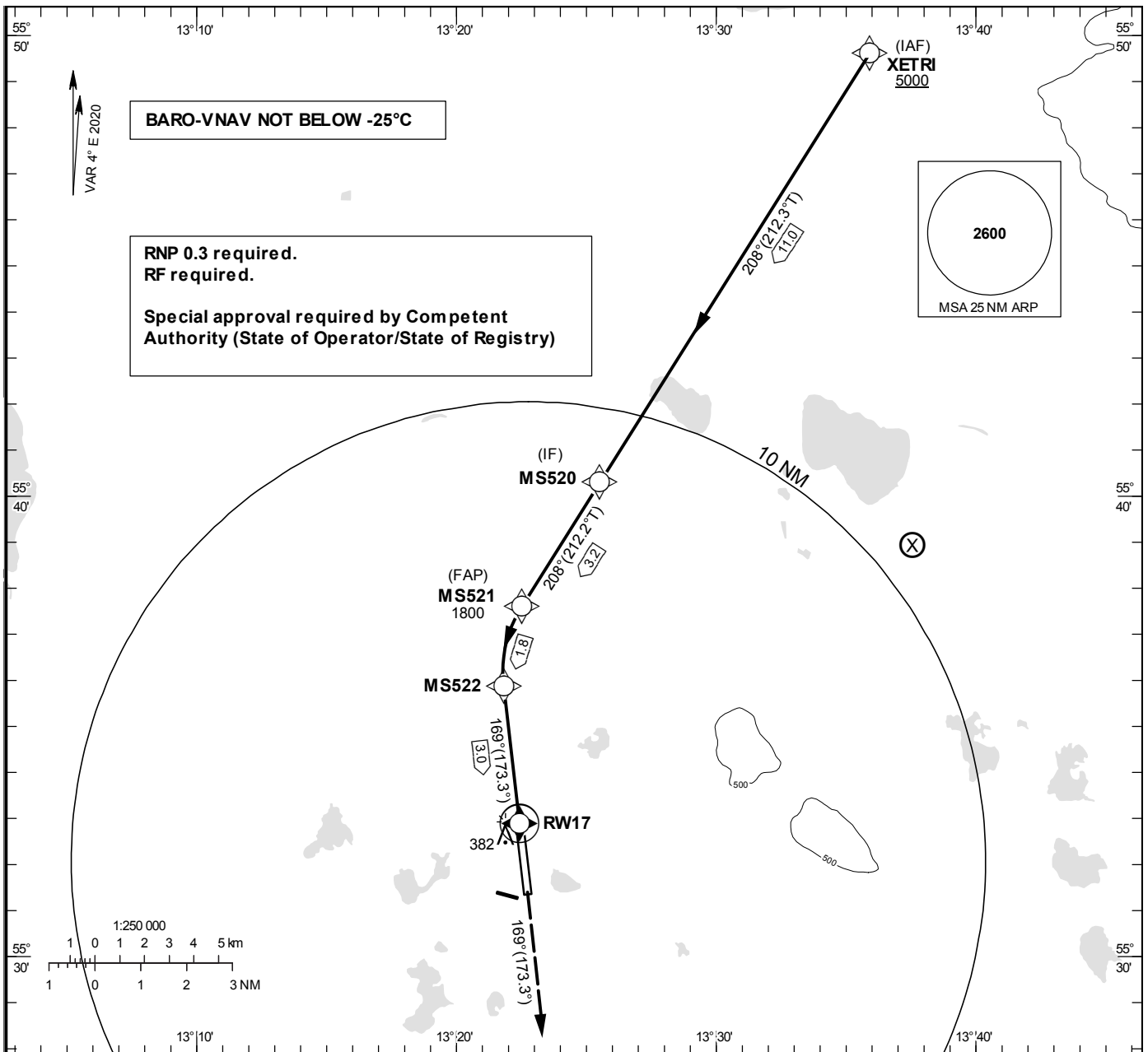


INSTRUMENT APPROACH CHART – ICAO

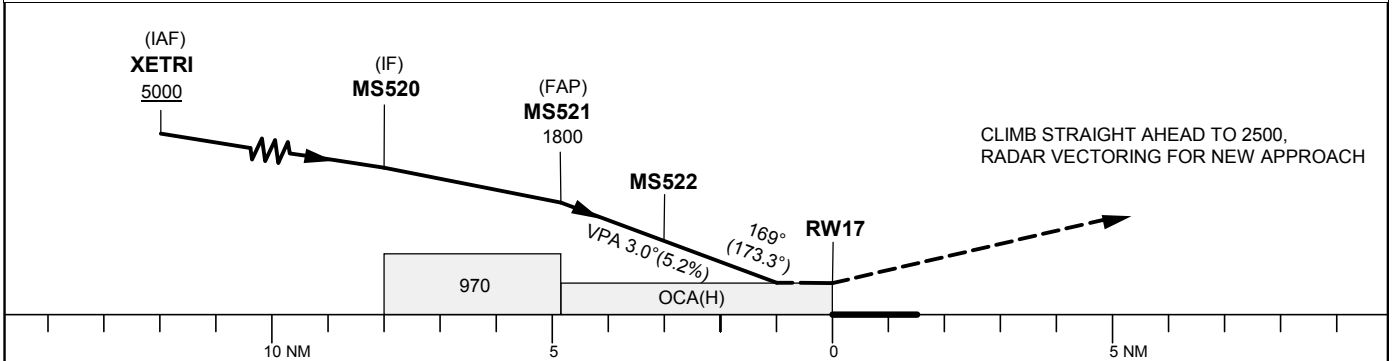
THR ELEV 208.8 ft, AD ELEV 237 ft
 OCH are related to THR.
 BRG are MAG (True).
 ALT, HGT and ELEV in ft.

STURUP TOWER	118.805
SWEDEN CONTROL	134.980
STURUP ATIS	129.280

RNP y RWY 17 (AR)



TA 5000 ft AMSL RDH 57 ft



OCA (H)			
Cat of ACFT	B	C	D
RNP(0.3)	530(330)	540(340)	550(350)

RNP y RWY 17 (AR) via XETRI

Path Desc	Waypoint Identifier	Fly-over	Course °M(°T)	Dist (NM)	Turn Dir	Rest Alts	Speed Limits	VPA/RDH	Arc radius	Arc center	Rec NAV	Nav Spec
IF	XETRI	-	-	-	-	+5000	-	-	-	-	-	RNP 1.0
TF	MS520	-	208°(212.3°)	11.0	-	-	-	-	-	-	-	RNP 1.0
TF	MS521	-	208° (212.1°)	3.2	-	@1800	-	-	-	-	-	RNP 0.3
RF	MS522	-	-	-	L	-	-	-3.0	2.690	ARC27	-	RNP 0.3
TF	RW17	Y	169° (173.3°)	3.0	-	@266	-	-3.0/57	-	-	-	RNP 0.3
FA	-	-	169° (173.3°)	-	-	2500	-	-	-	-	SUP	RNP 1.0