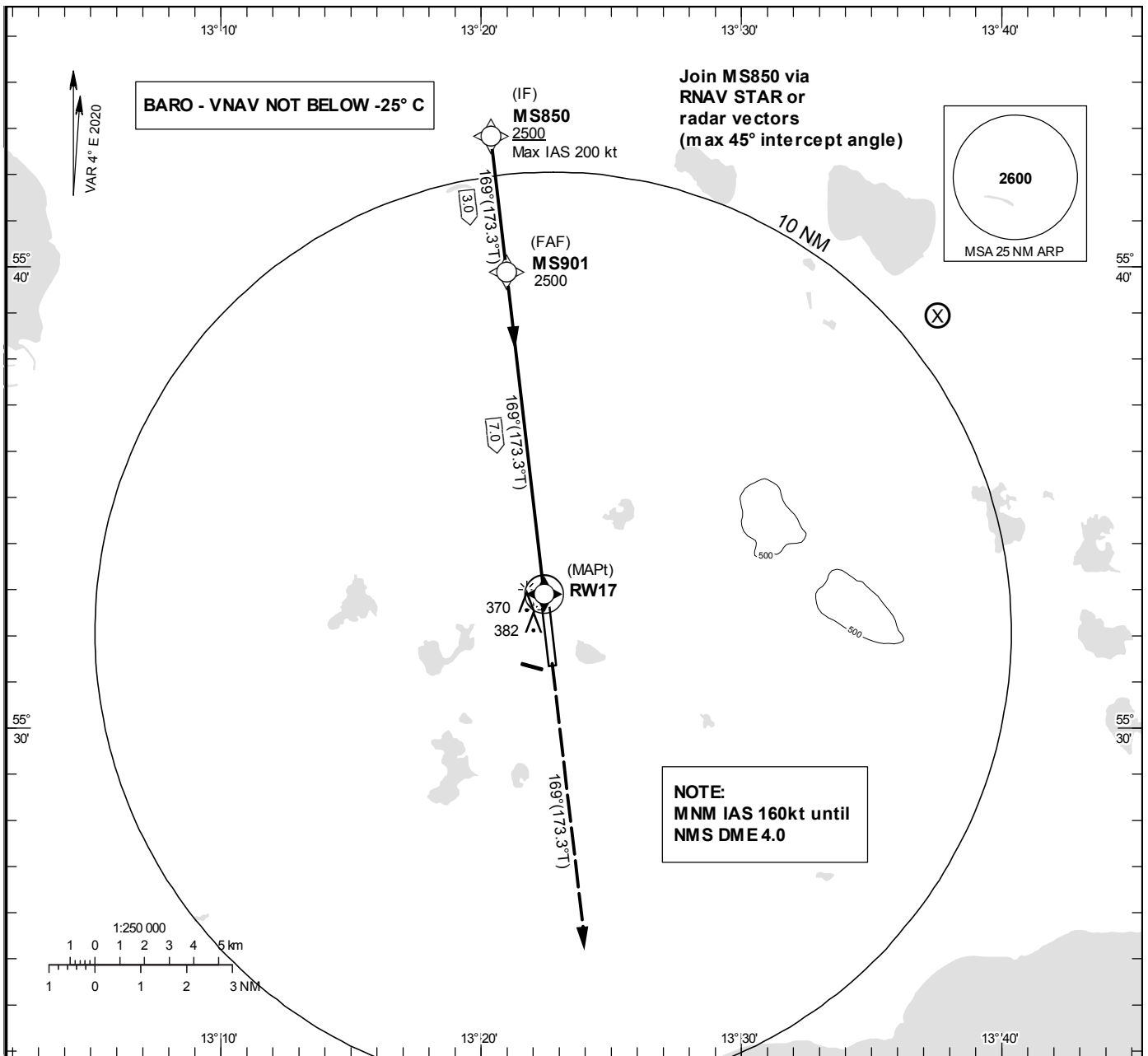


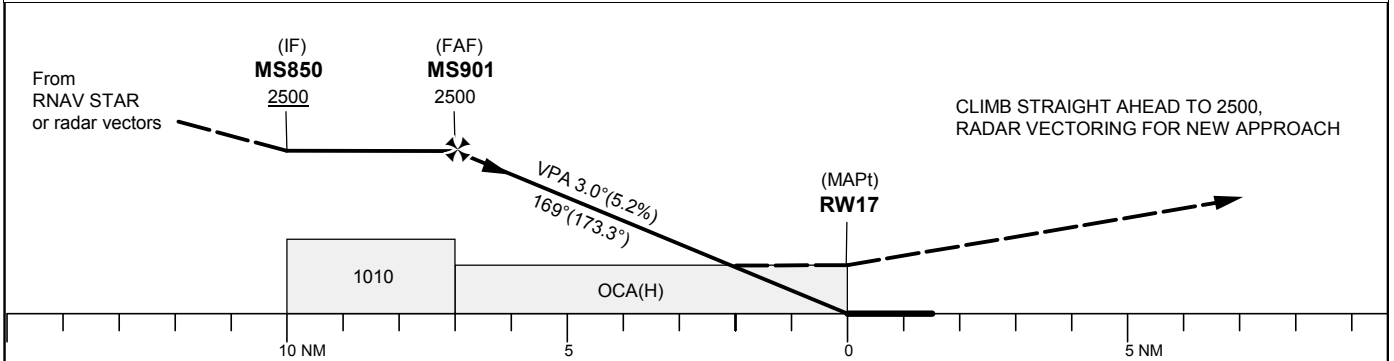
INSTRUMENT APPROACH CHART – ICAO
THR ELEV 208.8 ft, AD ELEV 237 ft
 OCH are related to THR.
 BRG are MAG (True).
 ALT, HGT and ELEV in ft.

STURUP TOWER	118.805
SWEDEN CONTROL	134.980
STURUP ATIS	129.280

RNP z RWY 17



TA 5000 ft AMSL RDH 50 ft



OCA (H)					Final approach	Distance FAF-MAPt 7.0 NM						
Cat of ACFT	A	B	C	D	Dist to RWY 17	6	5	4	3	2		
LNAV/VNAV	520(320)	530(330)	540(340)	550(350)	ALT	2170	1850	1530	1210	900		
LNAV	620(420)				GS	kt	80	100	120	140	160	180
					Rate of descent	ft/min	425	530	635	745	850	955

RNP z RWY 17 via RNAV STAR or radar vectors

Path Desc	Waypoint Identifier	Fly-over	Course °M(°T)	Dist (NM)	Turn Dir	Altitude	Speed	VPA/RDH	Rec Navaid	Navigation Specification
IF	MS850	-	-	-	-	+2500	-200	-	-	RNP APCH
TF	MS901	-	169°(173.3°)	3.0	-	@2500	-	-	-	RNP APCH
TF	RW17	Y	169°(173.3°)	7.0	-	@259	-	-3.0/50	-	RNP APCH
CA	-	-	169°(173.3°)	-	-	+2500	-	-	-	RNP APCH
VM	-	-	169°	-	-	-	-	-	-	RNP APCH