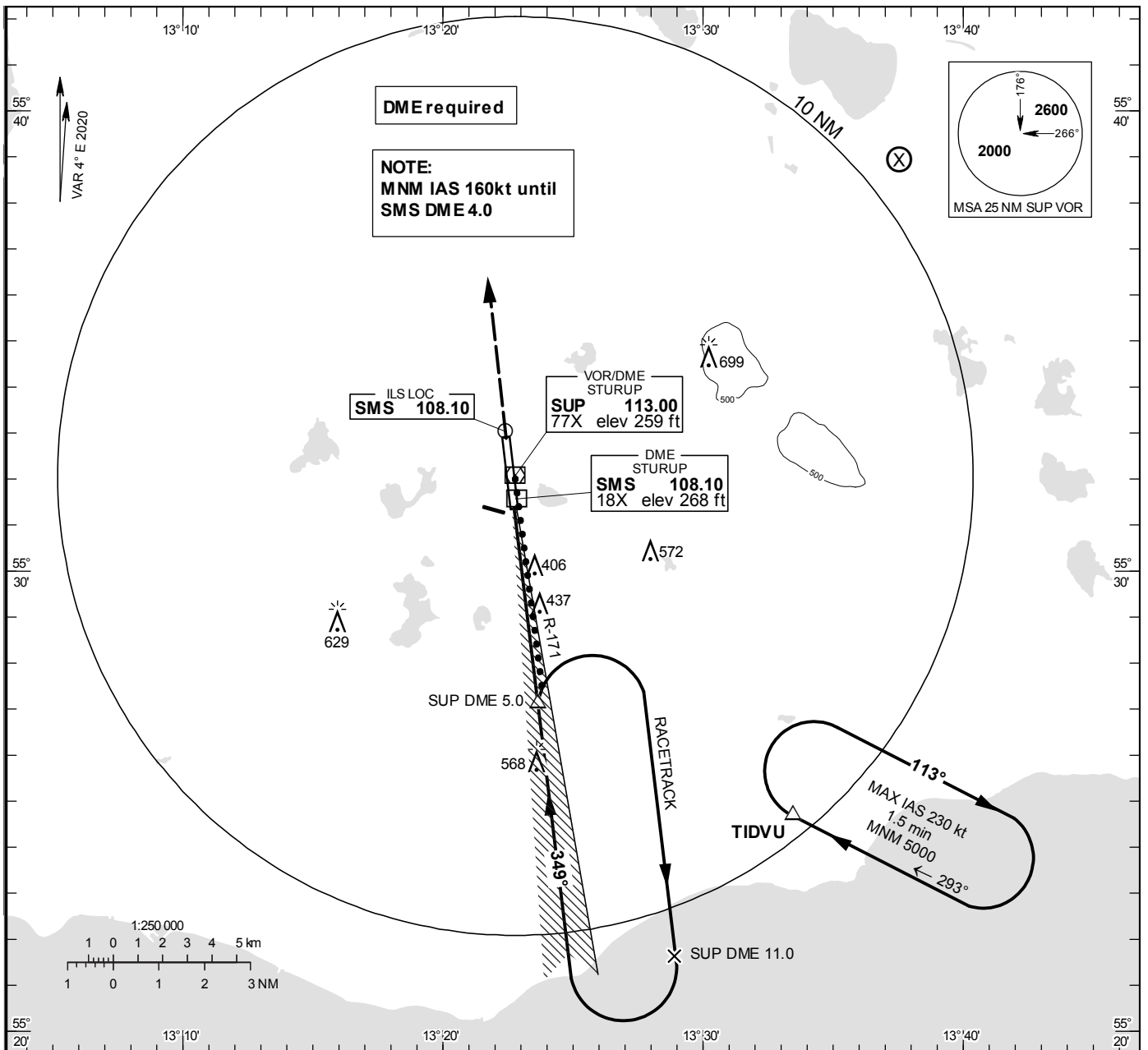


INSTRUMENT APPROACH CHART – ICAO

THR ELEV 236.3 ft, AD ELEV 237 ft
 OCH are related to THR.
 Circling OCH are related to AD ELEV.
 BRG are MAG
 ALT, HGT and ELEV in ft.

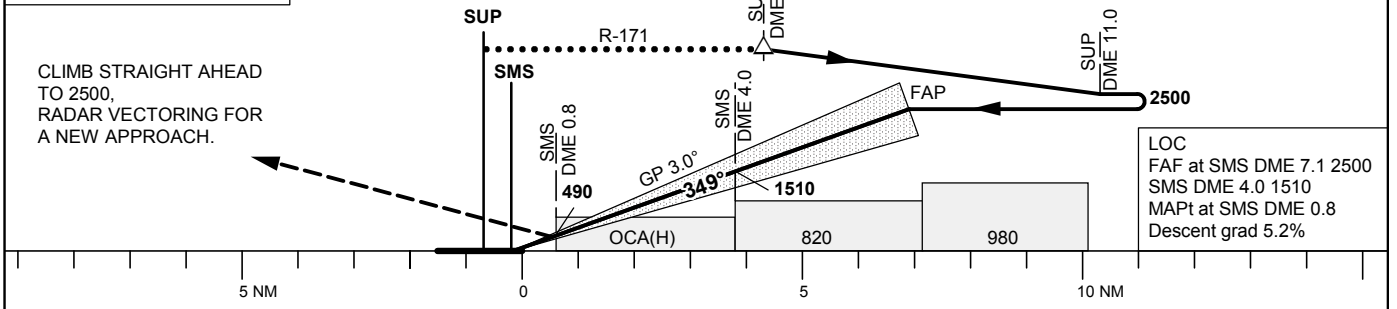
STURUP TOWER	118.805
SWEDEN CONTROL	134.980
STURUP ATIS	129.280

ILS or LOC RWY 35



TA 5000 ft AMSL RDH 52.2 ft Special COM Failure procedures see AIP-AD2 *Timing not authorized for defining the MAPt

OM replaced by SMS DME 4.0
 MM replaced by SMS DME 0.8



OCA (H)						Final approach		LOC Distance FAF-MAPt 6.3 NM*						
Cat of ACFT	A	B	C	D	D _L	DME	SMS NM	7	6	5	4	3	2	
Straight-in Approach	CAT I	378(142)	389(153)	405(169)	420(184)	425(189)	ALT	2460	2150	1830	1510	1190	870	
	LOC	690 (460)					GS	kt	80	100	120	140	160	180
							Time	min:s	4:45	3:48	3:10	2:43	2:22	2:07
Circling	710 (480)	740 (510)	970(740)	1100(870)	1100(870)	Rate of descent	ft/min	425	535	640	745	850	960	