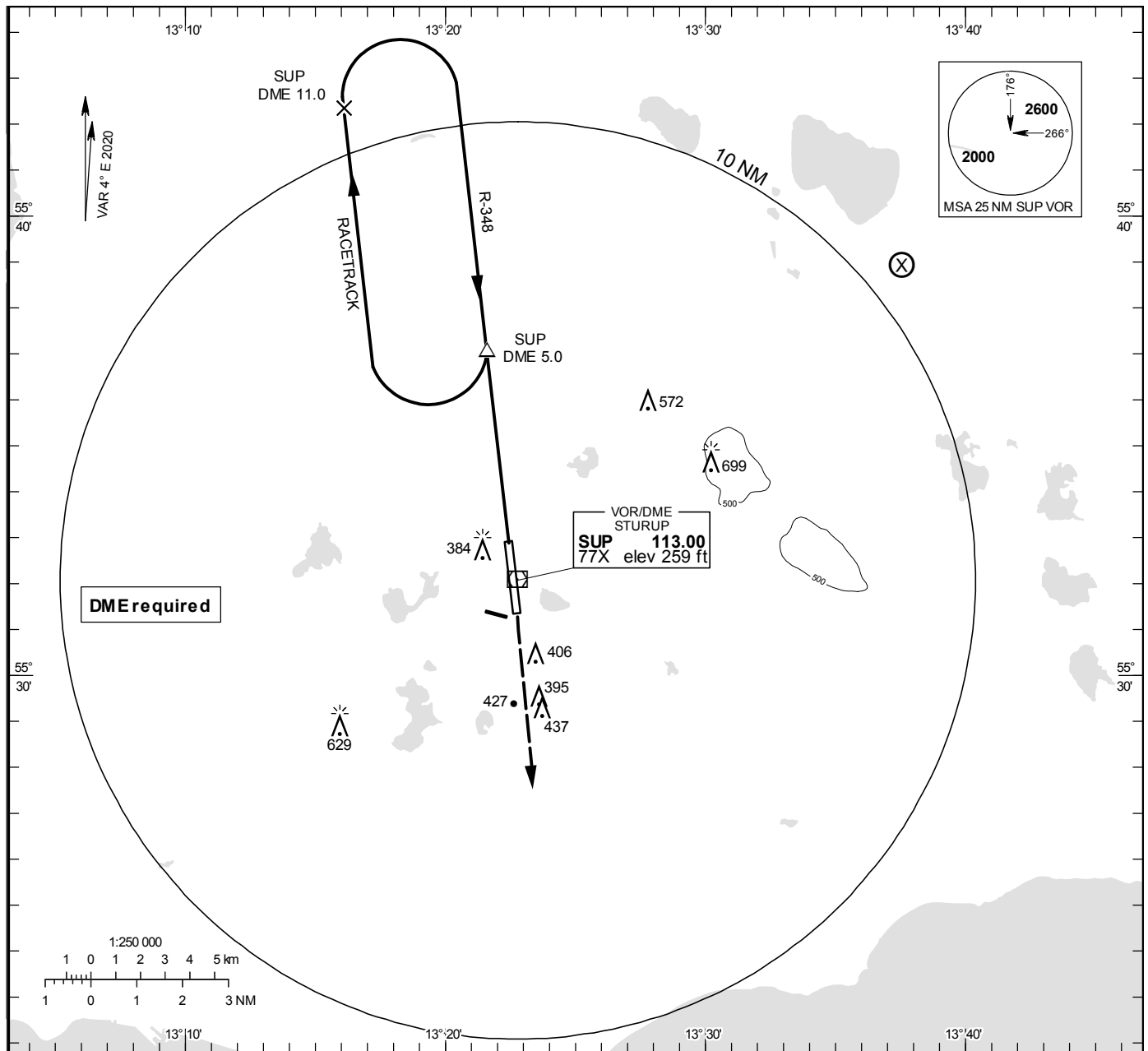


VOR RWY 17

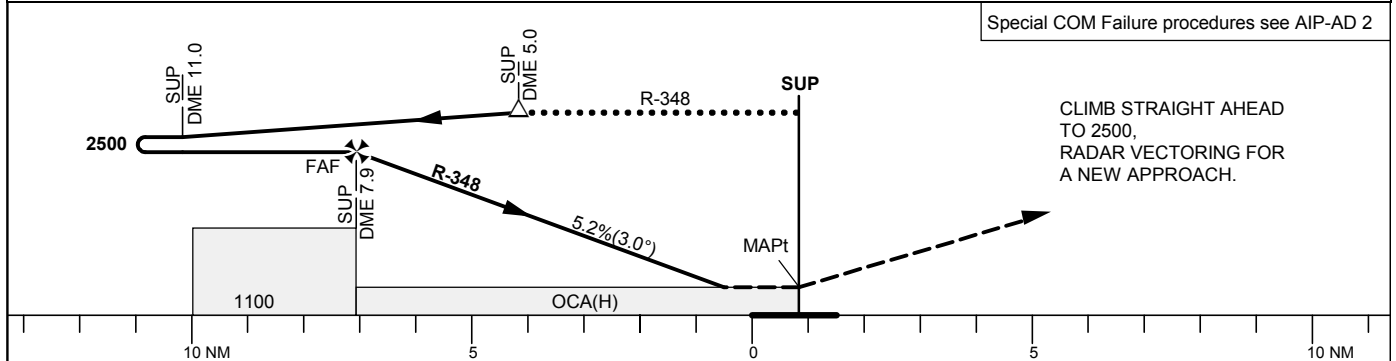
| | |
|----------------|---------|
| STURUP TOWER | 118.805 |
| SWEDEN CONTROL | 134.980 |
| STURUP ATIS | 129.280 |

THR ELEV 208.8 ft, AD ELEV 237 ft
 OCH are related to THR.
 Circling OCH are related to AD ELEV.
 BRG are MAG
 ALT. HGT and ELEV in ft.

INSTRUMENT
APPROACH
CHART – ICAO



TA 5000 ft AMSL Final APCH line offset 1° *Timing not authorized for defining the MAPt



| Cat of ACFT | OCA (H) | | | | Final approach | | | | | | | |
|----------------------|-----------|-----------|-----------|------------|-----------------|--------|------|------|------|------|------|------|
| | A | B | C | D | DME SUP NM | 7 | 6 | 5 | 4 | 3 | 2 | |
| Straight-in Approach | 630 (430) | | | | ALT | 2230 | 1910 | 1590 | 1270 | 950 | 640 | |
| Circling | 710 (480) | 740 (510) | 970 (740) | 1100 (870) | GS | kt | 80 | 100 | 120 | 140 | 160 | 180 |
| | | | | | Time | min:s | 5:54 | 4:43 | 3:56 | 3:22 | 2:57 | 2:37 |
| | | | | | Rate of descent | ft/min | 425 | 535 | 640 | 745 | 850 | 960 |