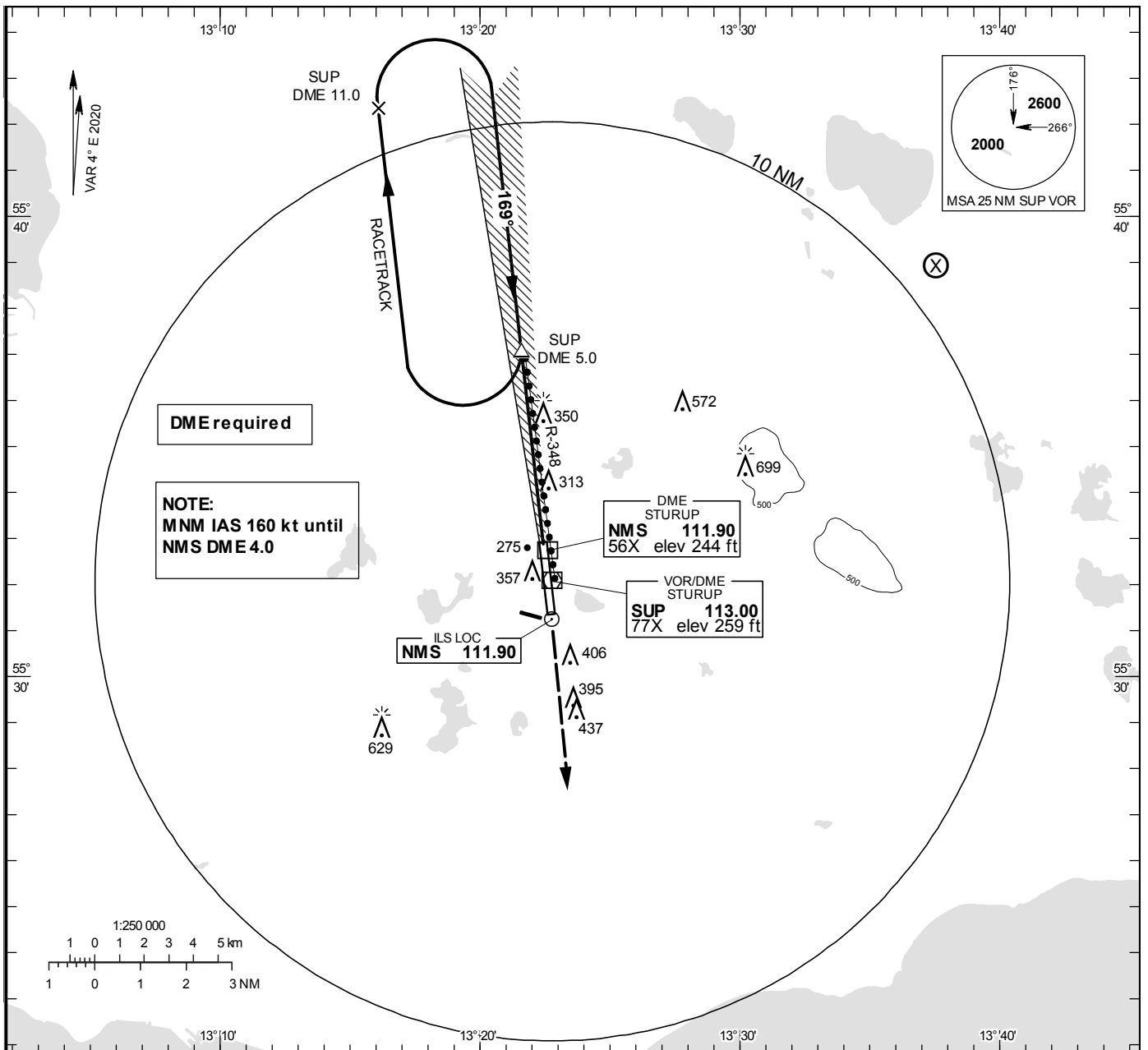


INSTRUMENT APPROACH CHART – ICAO

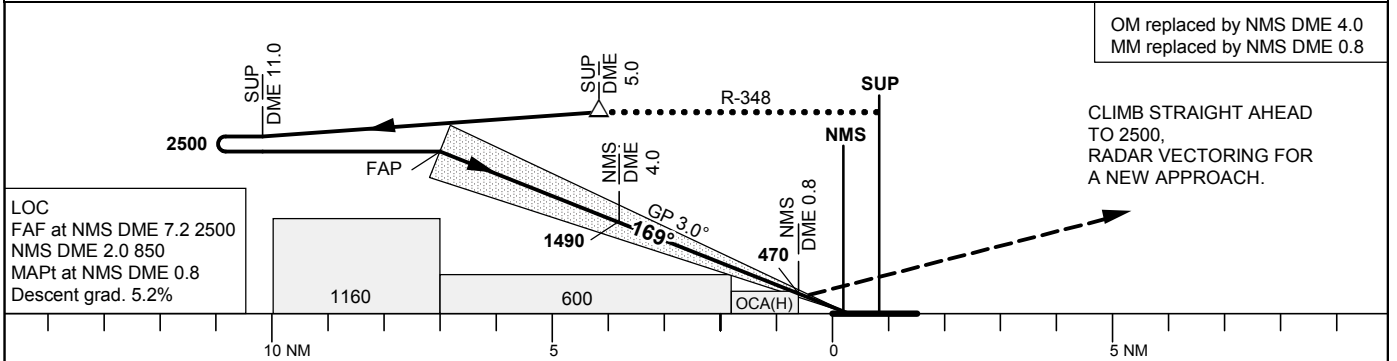
THR ELEV 208.8 ft, AD ELEV 237 ft
 OCH are related to THR.
 Circling OCH are related to AD ELEV.
 BRG are MAG
 ALT. HGT and ELEV in ft.

STURUP TOWER	118.805
SWEDEN CONTROL	134.980
STURUP ATIS	129.280

ILS or LOC RWY 17



TA 5000 ft AMSL RDH 57.0 ft Special COM Failure procedures see AIP-AD 2 *Timing not authorized for defining the MAPt



Cat of ACFT	OCA (H)					Final approach	LOC Distance FAF-MAPt 6.4 NM*							
	A	B	C	D	D _L		DME NMS NM	7	6	5	4	3	2	
Straight-in Approach	CAT I	351(142)	362(153)	377(168)	392(183)	397(188)	ALT	2440	2120	1810	1490	1170	850	
	CAT II	258(49)	268(59)	282(73)	294(85)	295(86)	GS	kt	80	100	120	140	160	180
Circling	LOC	570(370)					Time	min:s	4:47	3:50	3:11	2:44	2:24	2:08
							Rate of descent	ft/min	425	535	640	745	850	960