

VISUAL APPROACH CHART - ICAO

1:250000



AD ELEV 21 FEET

ELEV and ALT in ft
HGT in ft above AD ELEV

TA 5000 AMSL

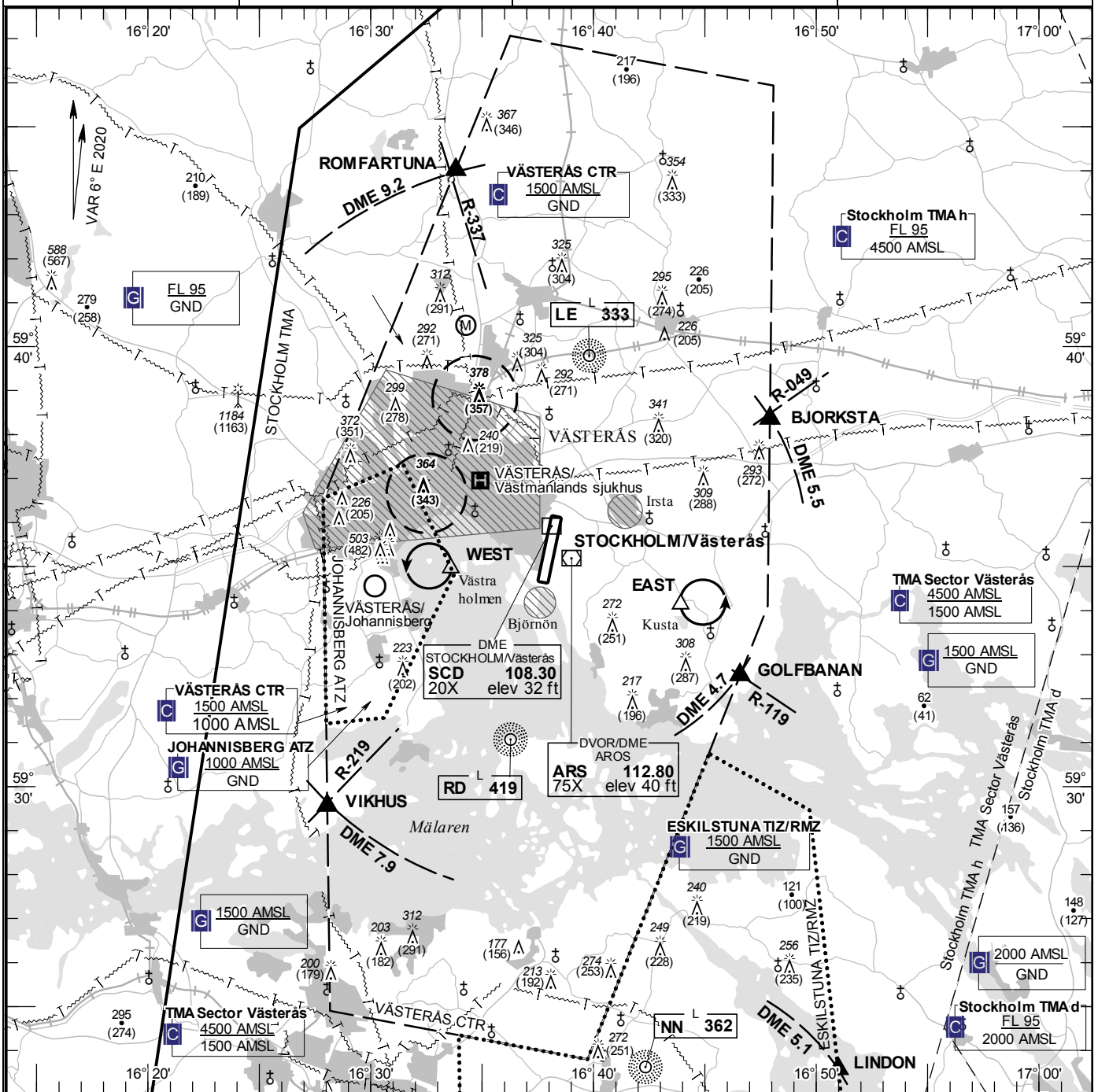
VÄSTERÅS TOWER 130.605

VÄSTERÅS CONTROL 125.955

VÄSTERÅS ATIS 127.555

AD 2 ESOW 6-1

STOCKHOLM/Västerås SWEDEN



Communication failure

- 1 SQUAWK 7600
- 2 Enter CTR via VIKHUS – Holding WEST or via BJORKSTA/GOLFBANAN – Holding EAST at or below 1000 ft AMSL to traffic circuit. Transmit blind your intentions.
- 3 Flash LDG-lights and watch TWR for optical signals.

RWY NR	THR ELEV	PAPI (MEHT)
01	6 ft	Left/3.25° (59 ft)
19	21.7 ft	Left/3.00° (50 ft)

Entry / exit point

ROMFARTUNA	594400N 0163349E
BJORKSTA	593821N 0164755E
GOLFBANAN	593231N 0164634E
VIKHUS	592933N 0162803E

Holding

- EAST:** Hold at Kusta, east of point 593412N 0164355E
- WEST:** Hold west of Västra Holmen, west of point 593457N 0163335E

Remark

Note: Noise sensitive area should be avoided over the central part of Västerås, Irsta and Björnön below 2000 ft AMSL, except in direct connection to take-off and landing.

Model flying sector Arosängen: Unmanned aircraft activity may occur. Position Lat 594028N Long 163416E with 400 m radius and 120 m above ground

Legend

See GEN 2.3