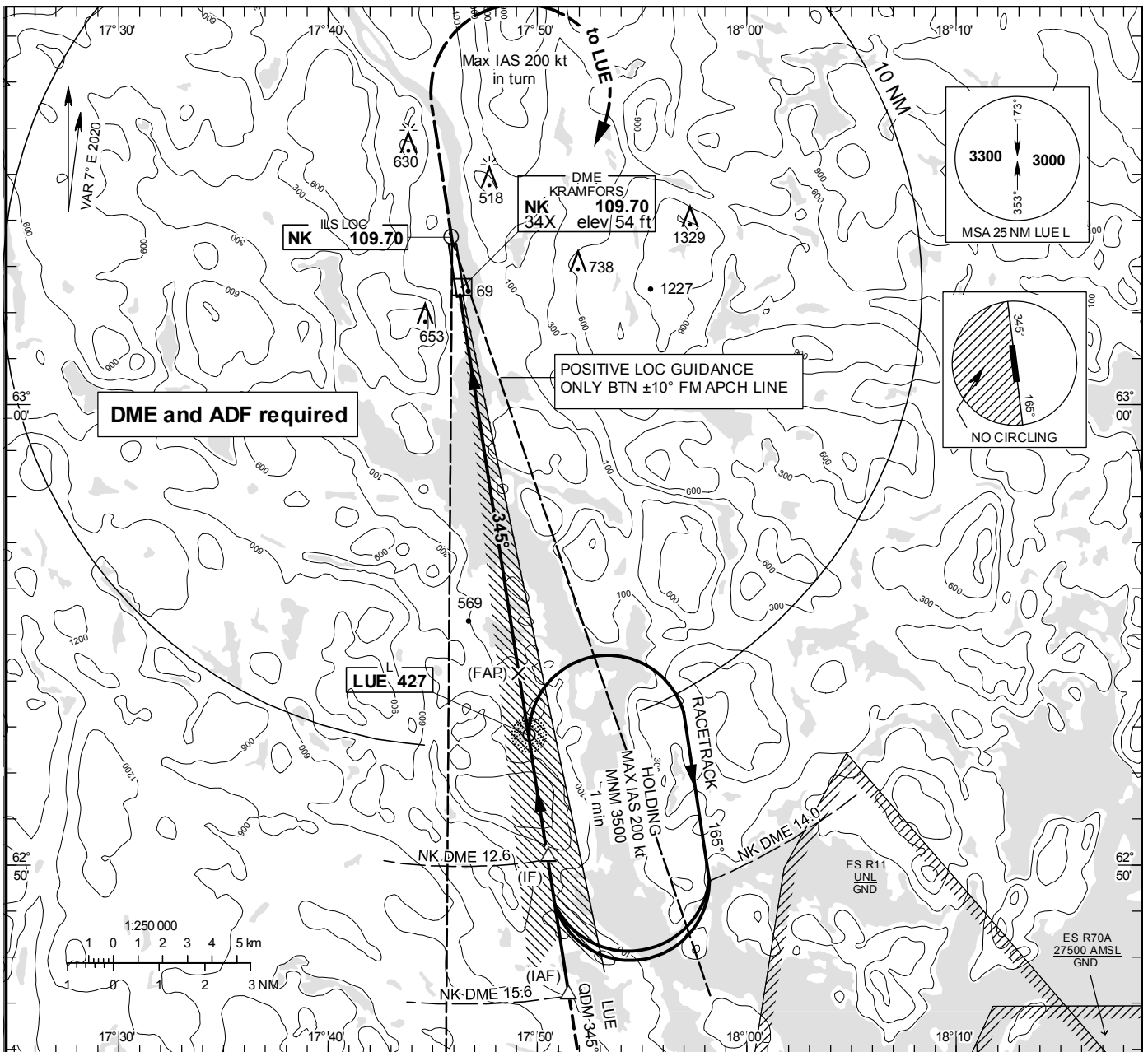


**INSTRUMENT APPROACH CHART – ICAO**

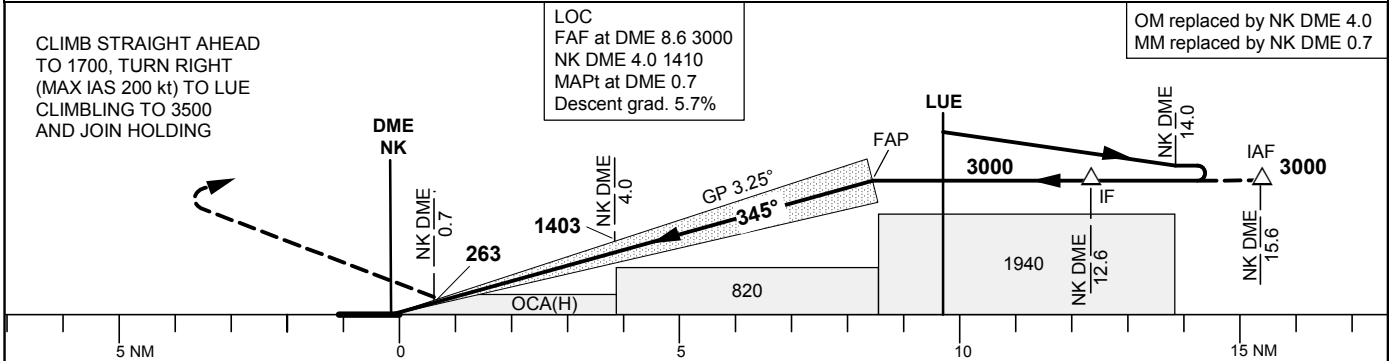
**THR ELEV 23.5 ft, AD ELEV 36 ft**  
OCH are related to THR.  
Circling OCH are related to AD ELEV.  
BRG are MAG  
ALT. HGT and ELEV in ft.

**KRAMFORS INFORMATION** 122.155

**ILS or LOC RWY 35**



**TA 5000 ft**    **RDH 50.9 ft**    **RACETRACK MAX IAS 200 kt**    \*Timing not authorized for defining the MAPt



OCA (H)					Final approach								
					LOC Distance FAF-MAPt 7.9 NM*								
Cat of ACFT	A	B	C	D	DME NK NM	8	7	6	5	4	3	2	
Straight-in Approach	CAT I	172(149)	182(159)	196(173)	209(186)	ALT	2780	2440	2090	1750	1400	1060	710
	LOC	670(650)			GS	kt	80	100	120	140	160	180	
Circling E RWY		820(790)	1040(1010)	1630(1600)	1730(1700)	Time	min:s	5:56	4:45	3:57	3:23	2:58	2:38
						Rate of descent	ft/min	460	575	690	805	920	1035