

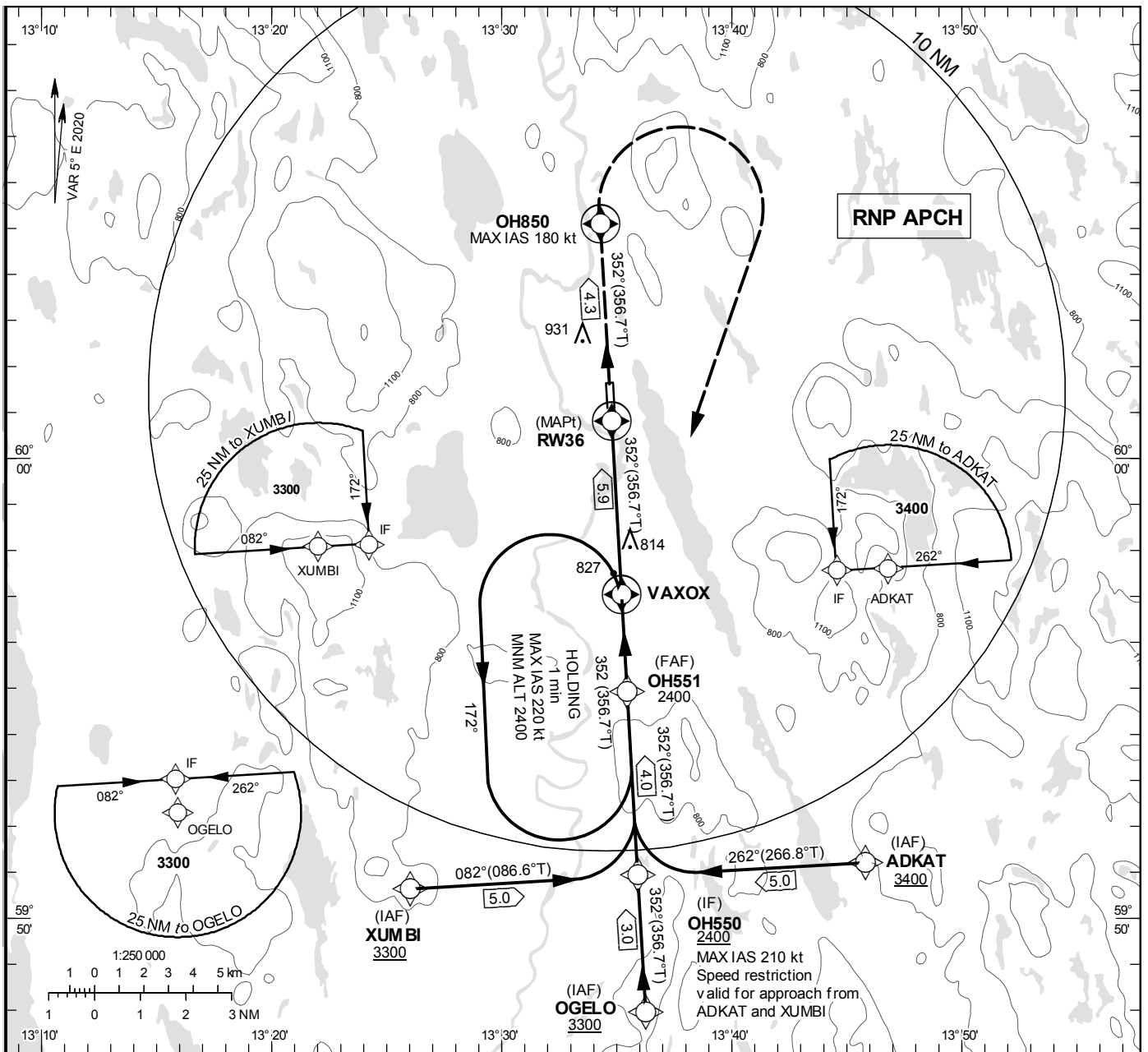
**INSTRUMENT  
APPROACH  
CHART – ICAO**

**THR ELEV 469 ft, AD ELEV 474 ft**  
OCH are related to THR.  
BRG are MAG (True).  
ALT, HGT and ELEV in ft.

HAGFORS INFORMATION 122.230

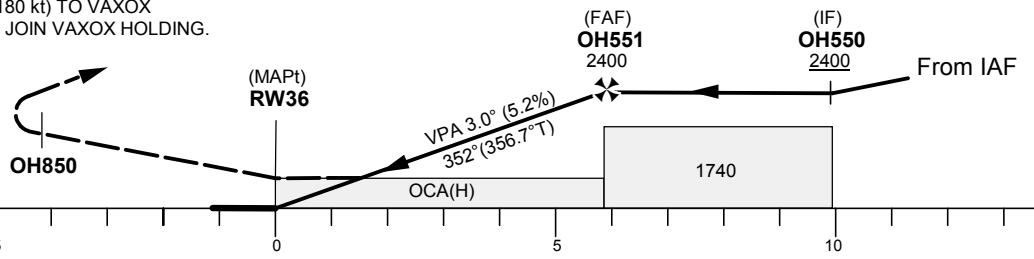
**RNP RWY 36**

EGNOS Ch 73329 E 36A



TA 5000 ft AMSL RDH 50 ft

CLIMB STRAIGHT AHEAD TO OH850,  
TURN RIGHT (MAX IAS 180 kt) TO VAXOX  
CLIMBING TO 2400 AND JOIN VAXOX HOLDING.



Cat of ACFT	OCA (H)			Final approach	Distance FAF-MAPT 5.9 NM					
	A	B	C	Dist to RW36	5	4	3	2		
LPV	817(348)	829(360)	837(368)	ALT	2110	1790	1470	1160		
LNAV	1080(620)			GS	kt	80	100	120	140	160
				Rate of descent	ft/min	425	530	635	745	850

## RNP RWY 36 via ADKAT

Path Desc	Waypoint Identifier	Fly-over	Course °M(°T)	Dist (NM)	Turn Dir	Altitude	Speed	VPA/RDH	Rec Navaid	Navigation Specification
IF	ADKAT	-	-	-	-	+3400	-	-	-	RNP APCH
TF	OH550	-	262°(266.8°)	5.0	-	+2400	-210	-	-	RNP APCH

## RNP RWY 36 via OGELO

Path Desc	Waypoint Identifier	Fly-over	Course °M(°T)	Dist (NM)	Turn Dir	Altitude	Speed	VPA/RDH	Rec Navaid	Navigation Specification
IF	OGELO	-	-	-	-	+3300	-	-	-	RNP APCH
TF	OH550	-	352°(356.7°)	3.0	-	+2400	-	-	-	RNP APCH

## RNP RWY 36 via XUMBI

Path Desc	Waypoint Identifier	Fly-over	Course °M(°T)	Dist (NM)	Turn Dir	Altitude	Speed	VPA/RDH	Rec Navaid	Navigation Specification
IF	XUMBI	-	-	-	-	+3300	-	-	-	RNP APCH
TF	OH550	-	082°(086.6°)	5.0	-	+2400	-210	-	-	RNP APCH

Path Desc	Waypoint Identifier	Fly-over	Course °M(°T)	Dist (NM)	Turn Dir	Altitude	Speed	VPA/RDH	Rec Navaid	Navigation Specification
IF	OH550	-	-	-	-	+2400	-	-	-	RNP APCH
TF	OH551	-	352°(356.7°)	4.0	-	@2400	-	-	-	RNP APCH
TF	RW36	Y	352°(356.7°)	5.9	-	@519	-	-3.0/50	-	RNP APCH
TF	OH850	Y	352°(356.7°)	4.3	-	-	-180	-	-	RNP APCH
DF	VAXOX	Y	-	-	R	+2400	-	-	-	RNP APCH
HM	VAXOX	Y	352°(356.7°)	-	L	+2400	-220	-	-	RNAV 1

## FAS Data Block

## RNP RWY 36

## Input data

Operation Type	0
SBAS Provider	1 (EGNOS)
Airport Identifier	ESOH
Runway	36
Runway Letter	0 (None)
Approach Performance Designator	0
Route Indicator	
Reference Path Data Selector	0
Reference Path Identifier	E36A
LTP/FTP Latitude	600047.9100N
LTP/FTP Longitude	0133446.8700E
LTP/FTP Ellipsoidal Height (metres)	174.0
FPAP Latitude	600136.5700N
Delta FPAP Latitude (seconds)	48.6600
FPAP Longitude	0133441.2400E
Delta FPAP Longitude (seconds)	-5.6300
Threshold Crossing Height	50.0
TCH Units Selector	0 (feet)
Glidepath Angle (degrees)	3.00
Course Width (metres)	105.00
Length Offset (metres)	0
HAL (metres)	40.0
VAL (metres)	50.0

## Output data

Data Block	10 08 0F 13 05 24 00 00 01 36 33 05 4C 42 C1 19 AC E8 D3 05 CC 1A 28 7C 01 04 D4 FF F4 01 2C 01 64 00 C8 FA BE F0 DB 88
Calculated CRC Value	BEF0DB88

## Required Additional Data

ICAO Code	ES
LTP/FTP Orthometric Height (metres)	143.0