

VISUAL APPROACH CHART - ICAO

1:250000



AD ELEV 1509 FEET

ELEV and ALT in ft
HGT in ft above AD ELEV

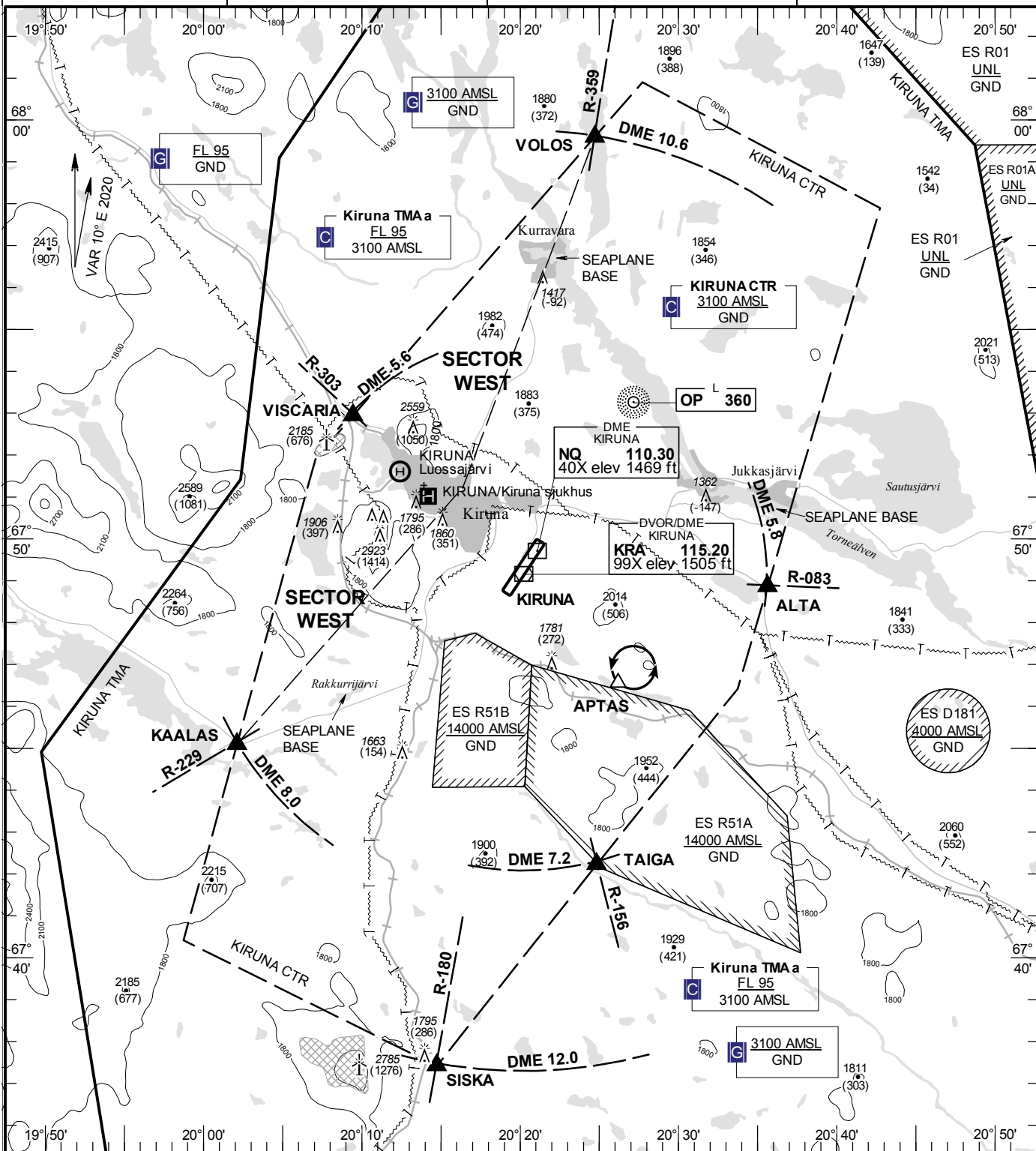
TA 6000 AMSL

KIRUNA TOWER

130.155

AD 2 ESNQ 6-1

KIRUNA SWEDEN



Communication failure

- 1 Enter CTR via ALTA – Holding APTAS at or below 2500 ft AMSL to traffic circuit. Transmit blind your intentions.
- 2 Flash LDG-lights and watch TWR for optical signals.

RWY NR	THR ELEV	PAPI (MEHT)
03	1509 ft	Left/3.00° (55 ft)
21	1432.3 ft	Left/3.00° (60 ft)

Entry / exit point

VOLOS	675935N 0202443E
ALTA	674851N 0203537E
TAIGA	674213N 0202450E
SISKI	673725N 0201444E
KAALAS	674505N 0200207E
VISCARIA	675256N 0200926E

Remark

NIL

Legend

See GEN 2.3

Holding

APTAS: Hold north of railway, north east of point 674632N 0202612E

LFV

CHANGE: DVOR/DME KRA ELEV

AIRAC AMDT 1/2020 **30 JAN 2020**