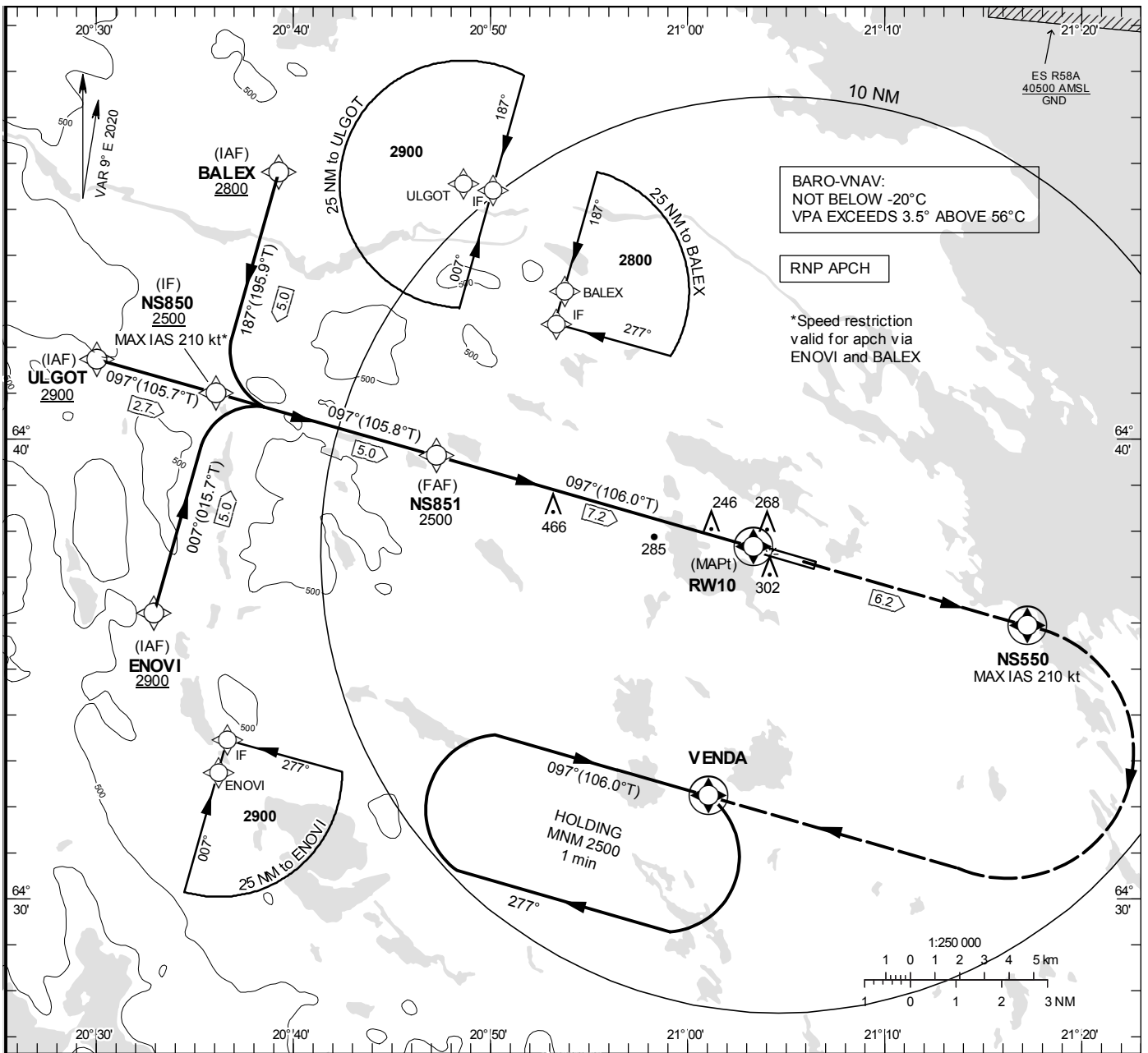


**INSTRUMENT  
APPROACH  
CHART – ICAO**

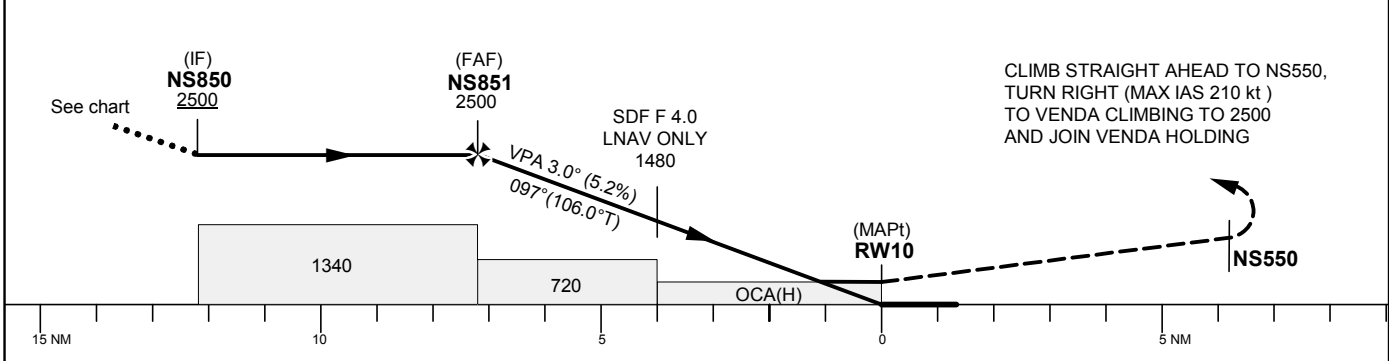
**THR ELEV 158 ft, AD ELEV 158 ft**  
 OCH are related to THR.  
 BRG are MAG (True).  
 ALT, HGT and ELEV in ft.

SKELLEFTEÅ TOWER 122.055

**RNP RWY 10**



TA 5000 ft AMSL RDH 50 ft



Cat of ACFT	OCA (H)				Final approach							
	A	B	C	D	Dist to RW10 (NM)	7	6	5	4	3	2	1
LNAV/VNAV	400(250)	420(270)	460(310)	470(320)	ALT	2440	2120	1800	1480	1160	840	530
LNAV	530(380)				GS	kt	80	100	120	140	160	180
					Rate of descent	ft/min	425	530	635	745	850	955

## RNP RWY 10 via BALEX

Path Desc	Waypoint Identifier	Fly-over	Course °M(°T)	Dist (NM)	Turn Dir	Altitude	Speed	VPA/RDH	Rec Navaid	Navigation Specification
IF	BALEX	-	-	-	-	+2800	-	-	-	RNP APCH
TF	NS850	-	187°(195.9°)	5.0	-	+2500	-210	-	-	RNP APCH

## RNP RWY 10 via ENOVI

Path Desc	Waypoint Identifier	Fly-over	Course °M(°T)	Dist (NM)	Turn Dir	Altitude	Speed	VPA/RDH	Rec Navaid	Navigation Specification
IF	ENOVI	-	-	-	-	+2900	-	-	-	RNP APCH
TF	NS850	-	007°(015.7°)	5.0	-	+2500	-210	-	-	RNP APCH

## RNP RWY 10 via ULGOT

Path Desc	Waypoint Identifier	Fly-over	Course °M(°T)	Dist (NM)	Turn Dir	Altitude	Speed	VPA/RDH	Rec Navaid	Navigation Specification
IF	ULGOT	-	-	-	-	+2900	-	-	-	RNP APCH
TF	NS850	-	097°(105.7°)	2.7	-	+2500	-	-	-	RNP APCH

Path Desc	Waypoint Identifier	Fly-over	Course °M(°T)	Dist (NM)	Turn Dir	Altitude	Speed	VPA/RDH	Rec Navaid	Navigation Specification
IF	NS850	-	-	-	-	+2500	-	-	-	RNP APCH
TF	NS851	-	097°(105.8°)	5.0	-	@2500	-	-	-	RNP APCH
TF	RW10	Y	097°(106.0°)	7.2	-	@208	-	-3.0/50	-	RNP APCH
DF	NS550	Y	-	6.2	-	-	-210	-	-	RNP APCH
DF	VENDA	Y	-	-	R	+2500	-	-	-	RNP APCH
HM	VENDA	Y	097°(106.0°)	-	R	+2500	-	-	-	RNAV 1