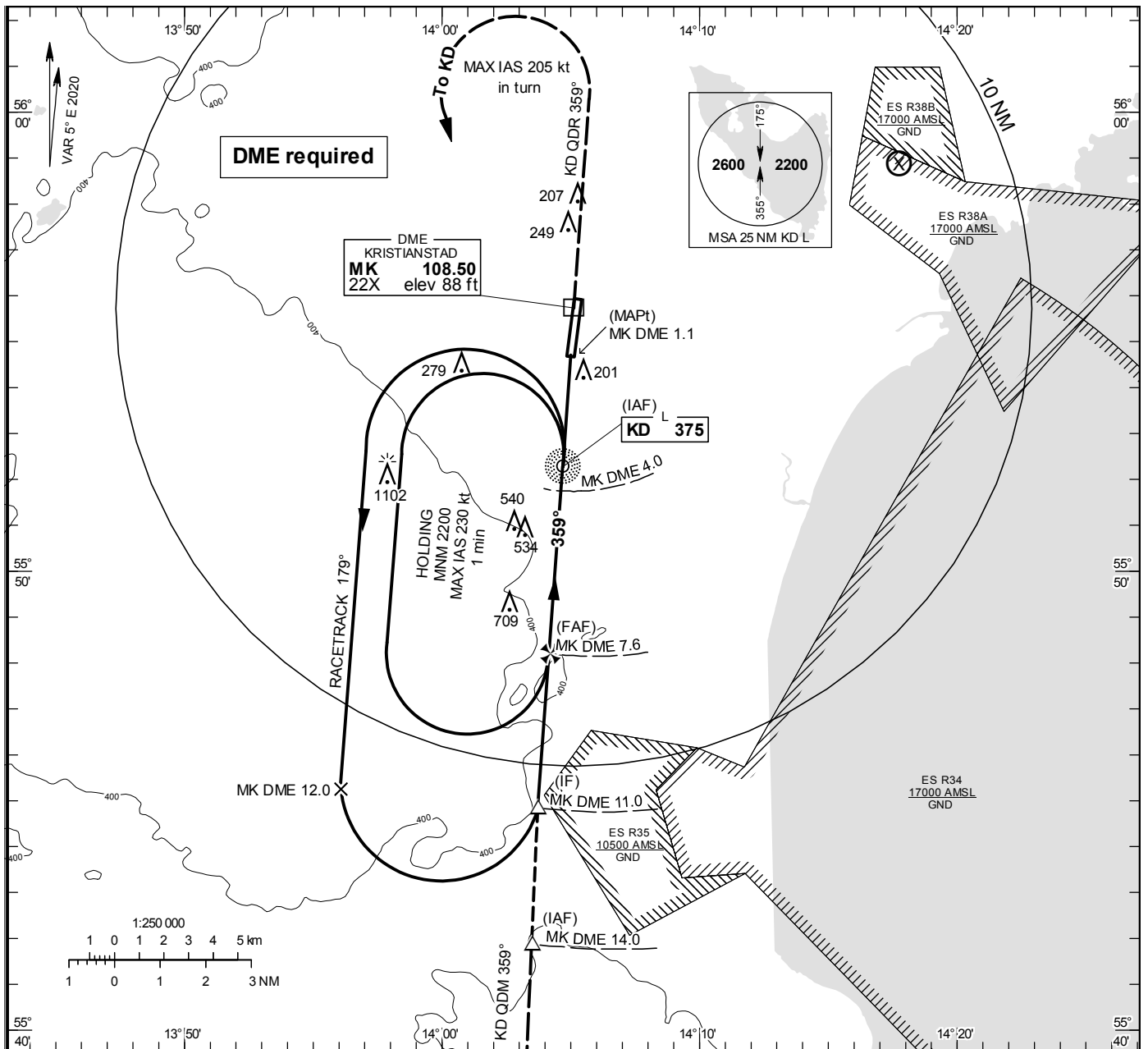


**INSTRUMENT
APPROACH
CHART – ICAO**

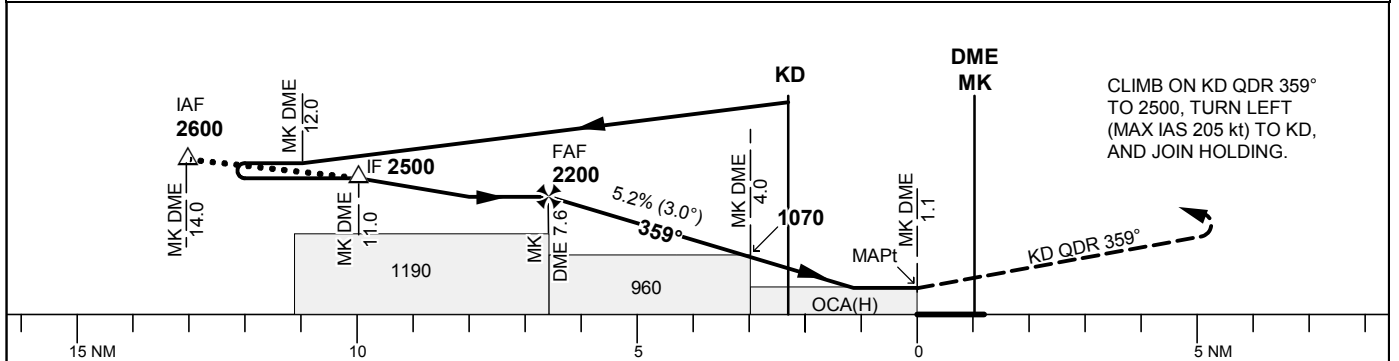
THR ELEV 77 ft, AD ELEV 77 ft
 OCH are related to THR.
 Circling OCH are related to AD ELEV.
 BRG are MAG
 ALT, HGT and ELEV in ft.

KRISTIANSTAD TOWER 129.355

NDB RWY 01



TA 5000 ft AMSL No turns before MAPt Final APCH line offset 3° *Timing not authorized for defining the MAPt



Cat of ACFT	OCA (H)				Final approach	Distance FAF-MAPt 6.5 NM*						
	A	B	C	D		DME MK NM	7	6	5	4	3	
Straight-in approach	450 (380)				ALT	2010	1700	1380	1060	750		
Circling	550(480)	580(510)	940(870)	1500(1430)	GS	kt	80	100	120	140	160	180
Circling E RWY	500(430)	510(440)	930(860)	930(860)	Time	min:s	4:53	3:54	3:15	2:47	2:26	2:10
					Rate of descent	ft/min	420	525	630	735	840	950