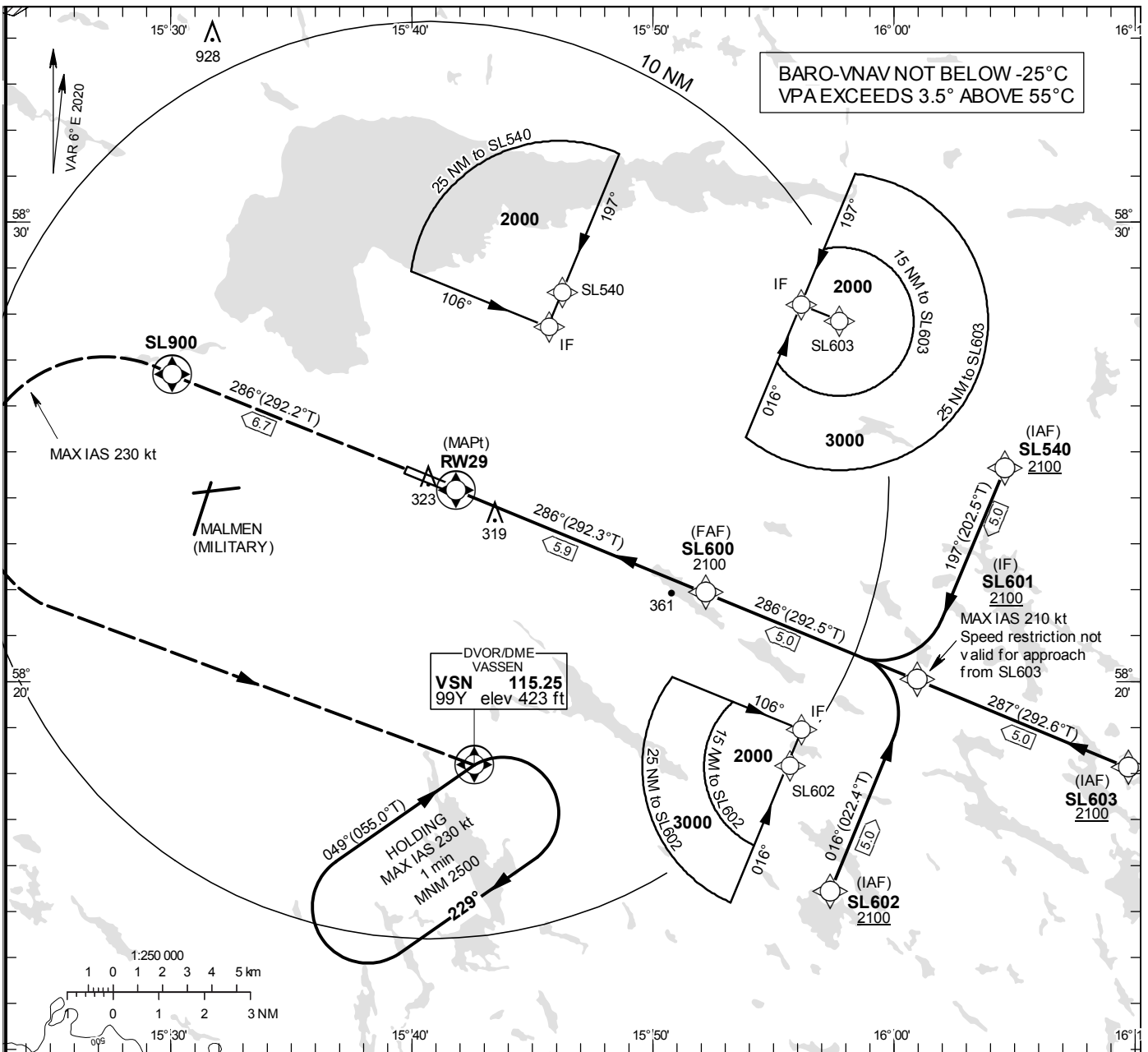


**INSTRUMENT
APPROACH
CHART – ICAO**

THR ELEV 172.9 ft, AD ELEV 173 ft
OCH are related to THR.
BRG are MAG (True).
ALT, HGT and ELEV in ft.

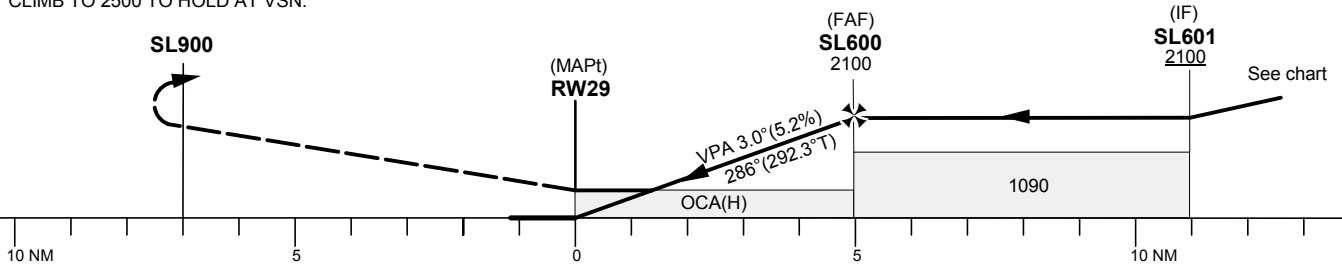
SAAB TOWER	118.805
ÖSTGÖTA CONTROL	132.955
	135.850

RNP RWY 29
EGNOS Ch 95195 E 29A



TA 5000 ft AMSL RDH 50 ft

CLIMB STRAIGHT AHEAD TO SL900.
TURN LEFT (MAX IAS 230 kt) AND CONTINUE
CLIMB TO 2500 TO HOLD AT VSN.



Cat of ACFT	OCA (H)				Final approach Dist to RWY29 NM	Distance FAF-MAPT 5.9 NM						
	A	B	C	D		5	4	3	2			
LPV	454(282)	466(294)	474(302)	485(313)	1820	1500	1180	860				
LNAV/VNAV	460(290)	470(300)	480(310)	490(320)	GS	80	100	120	140	160	180	
LNAV	610(440)				Rate of descent	ft/min	425	530	635	745	850	955

RNP RWY 29 via SL603

Path Desc	Waypoint Identifier	Fly-over	Course °M(°T)	Dist (NM)	Turn Dir	Altitude	Speed	VPA/RDH	Rec Navaid	Navigation Specification
IF	SL603	-	-	-	-	+2100	-	-	-	RNP APCH
TF	SL601	-	287°(292.6°)	5.0	-	+2100	-	-	-	RNP APCH

RNP RWY 29 via SL602

Path Desc	Waypoint Identifier	Fly-over	Course °M(°T)	Dist (NM)	Turn Dir	Altitude	Speed	VPA/RDH	Rec Navaid	Navigation Specification
IF	SL602	-	-	-	-	+2100	-	-	-	RNP APCH
TF	SL601	-	016°(022.4°)	5.0	-	+2100	-210	-	-	RNP APCH

RNP RWY 29 via SL540

Path Desc	Waypoint Identifier	Fly-over	Course °M(°T)	Dist (NM)	Turn Dir	Altitude	Speed	VPA/RDH	Rec Navaid	Navigation Specification
IF	SL540	-	-	-	-	+2100	-	-	-	RNP APCH
TF	SL601	-	197°(202.5°)	5.0	-	+2100	-210	-	-	RNP APCH

Path Desc	Waypoint Identifier	Fly-over	Course °M(°T)	Dist (NM)	Turn Dir	Altitude	Speed	VPA/RDH	Rec Navaid	Navigation Specification
IF	SL601	-	-	-	-	+2100	-	-	-	RNP APCH
TF	SL600	-	286°(292.5°)	5.0	-	@2100	-	-	-	RNP APCH
TF	RW29	Y	286°(292.3°)	5.9	-	@223	-	-3.0/50	-	RNP APCH
TF	SL900	Y	286°(292.2°)	6.7	-	-	-	-	-	RNP APCH
DF	VSN	Y	-	-	L	+2500	-230	-	-	RNP APCH
HM	VSN	Y	049°(055.0°)	-	R	+2500	-230	-	-	RNAV 1

FAS Data Block

RNP RWY 29

Input data

Operation Type	0
SBAS Provider	1
Airport Identifier	ESSL
Runway	29
Runway Direction	0
Approach Performance Designator	0
Route Indicator	
Reference Path Data Selector	0
Reference Path Identifier	E29A
LTP/FTP Latitude	582409.6155N
LTP/FTP Longitude	0154149.7720E
LTP/FTP Ellipsoidal Height (metres)	82.0
FPAP Latitude	582437.5790N
Delta FPAP Latitude (seconds)	27.9635
FPAP Longitude	0153939.0595E
Delta FPAP Longitude (seconds)	-130.7125
Threshold Crossing Height	15.0
TCH Units Selector	1
Glidepath Angle (degrees)	3.00
Course Width (metres)	105.00
Length Offset (metres)	160
HAL (metres)	40.0
VAL (metres)	50.0

Output data

Data Block	10 0C 13 13 05 1D 00 00 01 39 32 05 1F 4F 10 19 98 8A BC 06 34 17 77 DA 00 CF 02 FC 2C 81 2C 01 64 14 C8 FA 47 D3 AB 48
Calculated CRC Value	47D3AB48

Required Additional Data

ICAO Code	ES
LTP/FTP Orthometric Height (metres)	52.7
FPAP Orthometric Height (metres)	43.5