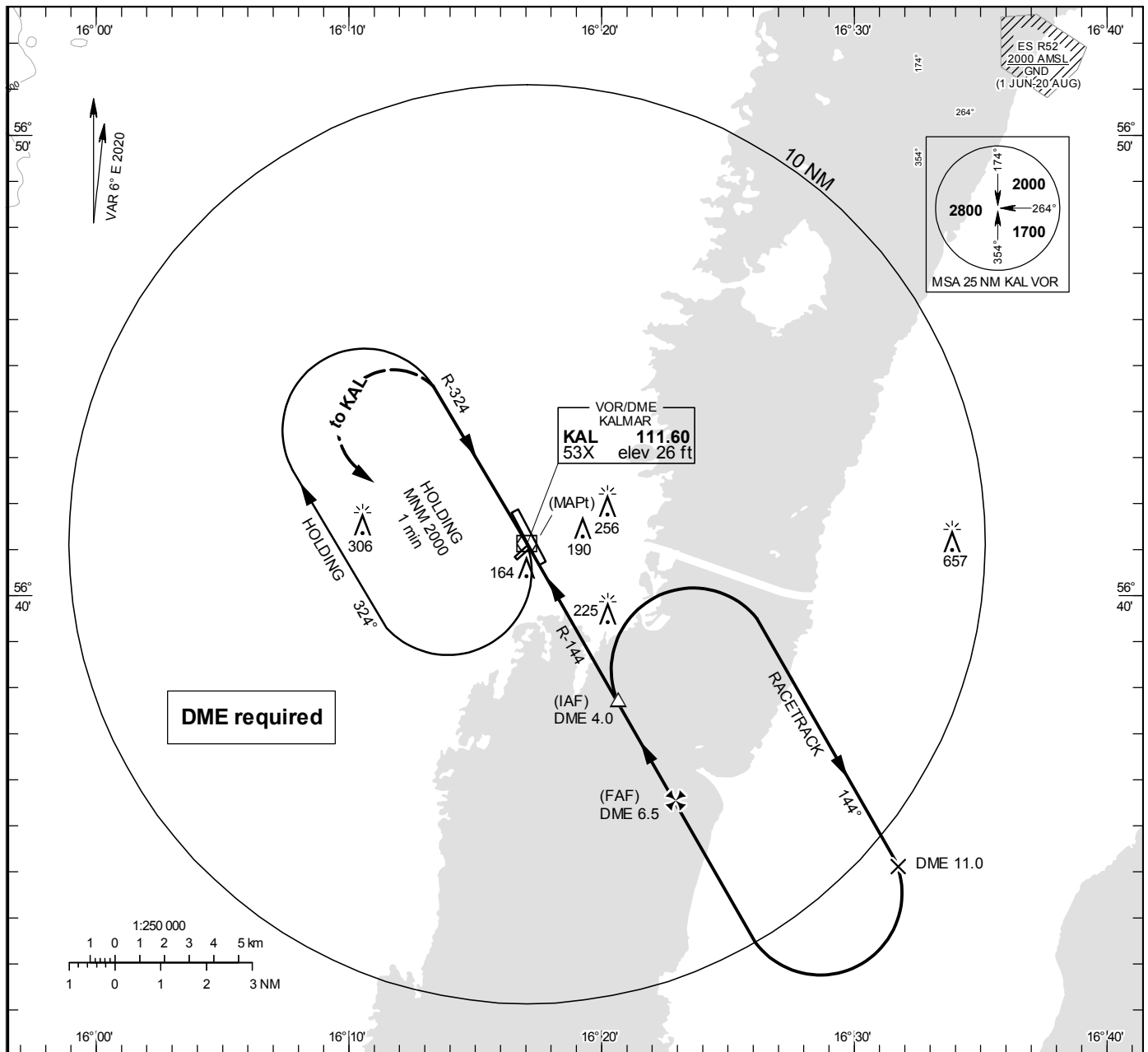


VOR RWY 34

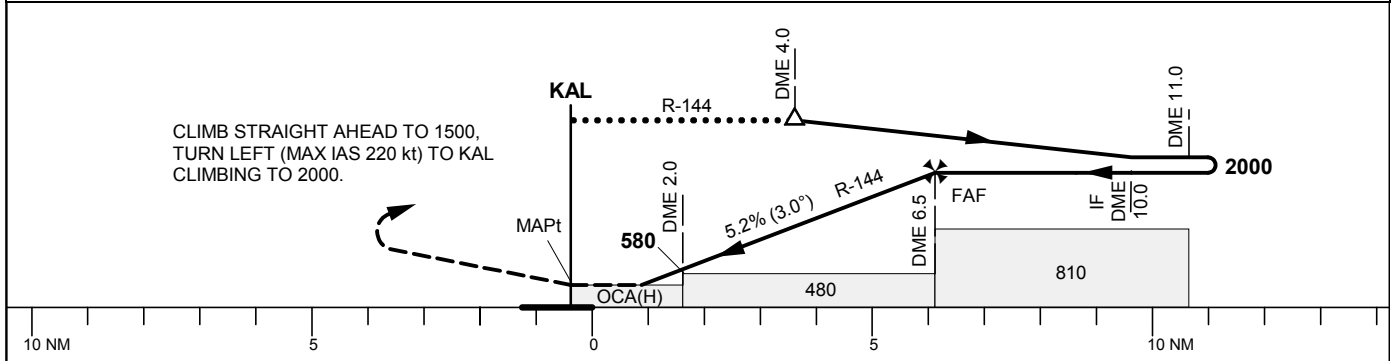
KALMAR TOWER 130.805

THR ELEV 16 ft, AD ELEV 18 ft
OCH are related to THR.
Circling OCH are related to AD ELEV.
BRG are MAG
ALT: HGT and ELEV in ft.

INSTRUMENT
APPROACH
CHART - ICAO



TA 5000 ft AMSL Final APCH line offset 2° Circling MAX IAS 200 kt *Timing not authorized for defining the MAPt



Cat of ACFT	OCA (H)				Final approach							
	A	B	C	D	DME KAL NM	6	5	4	3	2		
Straight-in Approach	410(400)				ALT	1860	1540	1220	900	580		
					GS	kt	80	100	120	140	160	180
Circling	490(480)	560(550)	700(690)	700(690)	Time	min:s	4:53	3:54	3:15	2:47	2:26	2:10
					Rate of descent	ft/min	425	530	635	745	850	955