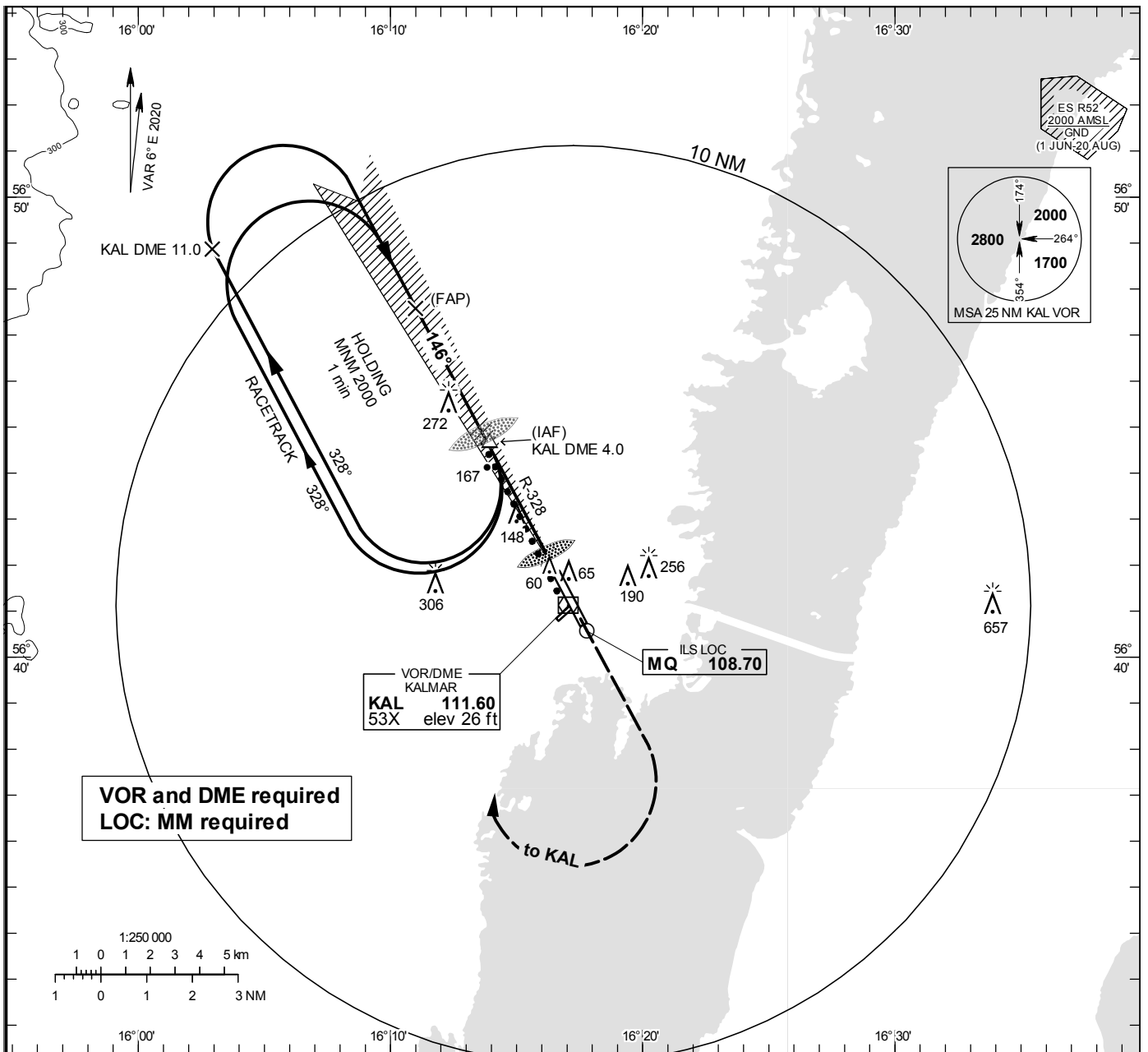


**INSTRUMENT APPROACH CHART – ICAO**

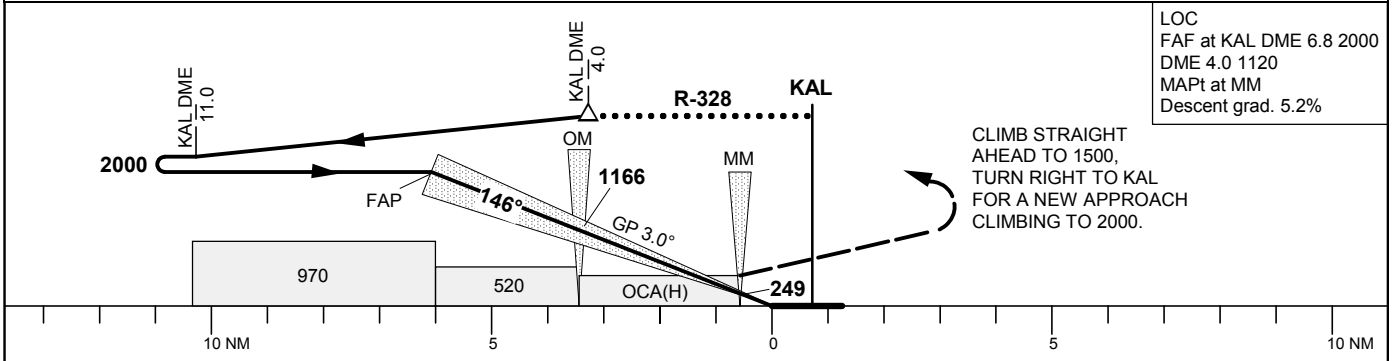
**THR ELEV 18.0 ft, AD ELEV 18 ft**  
 OCH are related to THR.  
 Circling OCH are related to AD ELEV.  
 BRG are MAG  
 ALT. HGT and ELEV in ft.

KALMAR TOWER 130.805

ILS z or LOC z RWY 16



TA 5000 ft AMSL RDH 50.2 ft Circling MAX IAS 200 kt \*Timing not authorized for defining the MAPt



OCA (H)					Final approach		LOC Distance FAF-MAPt 5.5 NM*						
Cat of ACFT	A	B	C	D	DME KAL NM	6	5	4	3	2			
Straight-in Approach	CAT I	162(144)	171(153)	183(165)	195(177)	ALT	1750	1430	1110	800	480		
	LOC	420(410)				GS	kt	80	100	120	140	160	180
Circling		490(480)	560(550)	700(690)	700(690)	Time	min:s	4:08	3:18	2:45	2:22	2:04	1:50
						Rate of descent	ft/min	425	530	635	745	850	955