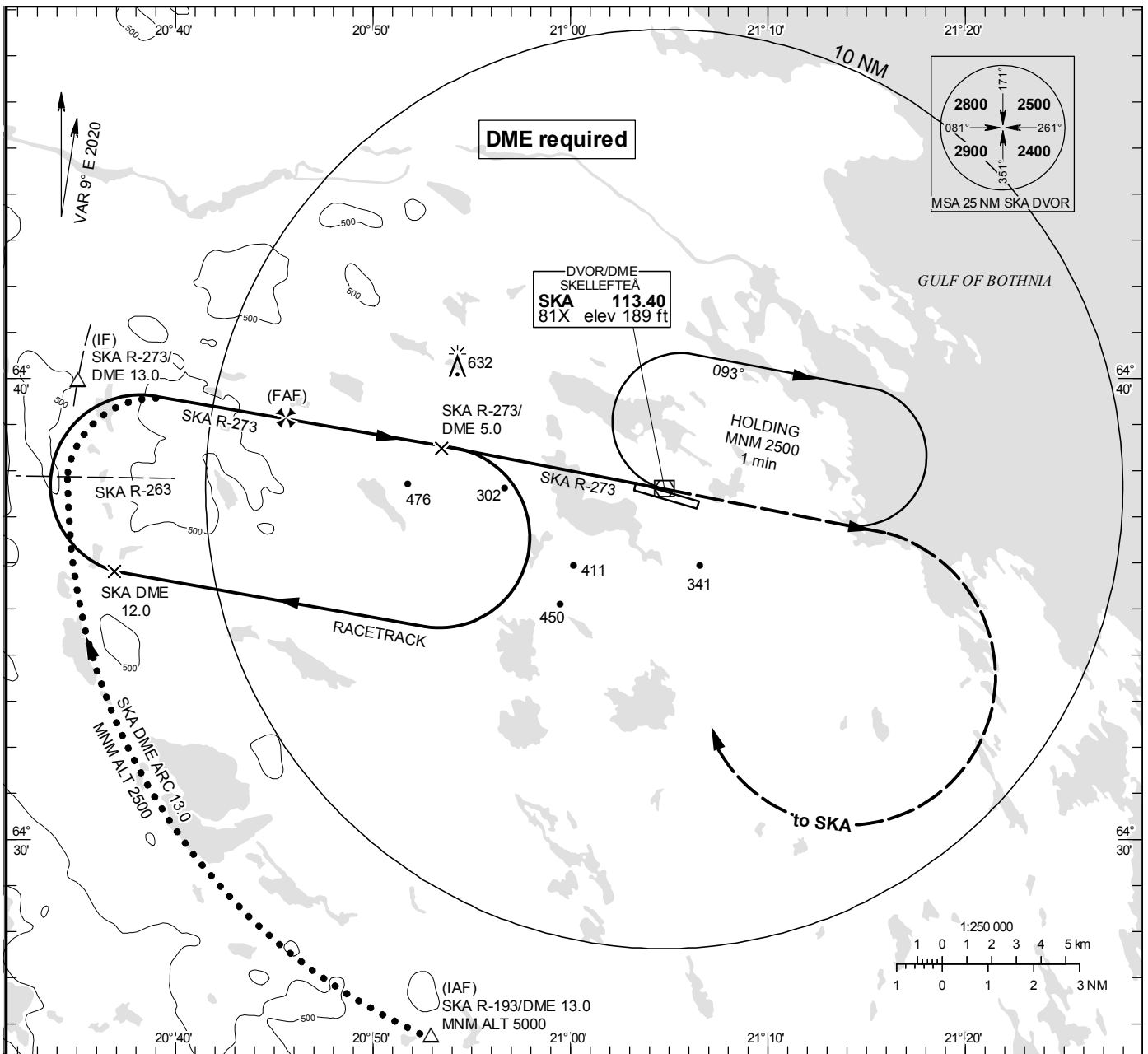


**INSTRUMENT  
APPROACH  
CHART – ICAO**

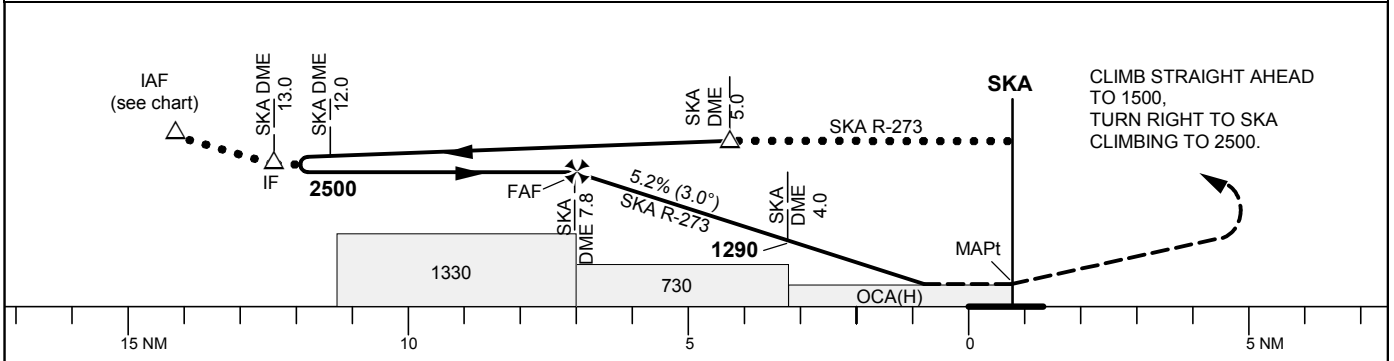
**THR ELEV 158 ft, AD ELEV 158 ft**  
 OCH are related to THR.  
 Circling OCH are related to AD ELEV.  
 BRG are MAG  
 ALT, HGT and ELEV in ft.

SKELLEFTEÅ TOWER 122.055

**VOR RWY 10**



**TA 5000 ft AMSL** \*Timing not authorized for defining the MAPt Final APCH line offset 5°



Cat of ACFT	OCA (H)				Final approach		Distance FAF-MAPt 7.8 NM*							
	A	B	C	D	DME SKA NM	ALT	7	6	5	4	3	2		
Straight-in Approach	550(400)						2250	1930	1610	1290	970	650		
Circling	640(490)	710(560)	850(700)	1030(880)			Kt	80	100	120	140	160	180	
							Time	min:s	5:51	4:41	3:54	3:20	2:55	2:36
							Rate of descent	ft/min	425	530	635	745	850	955