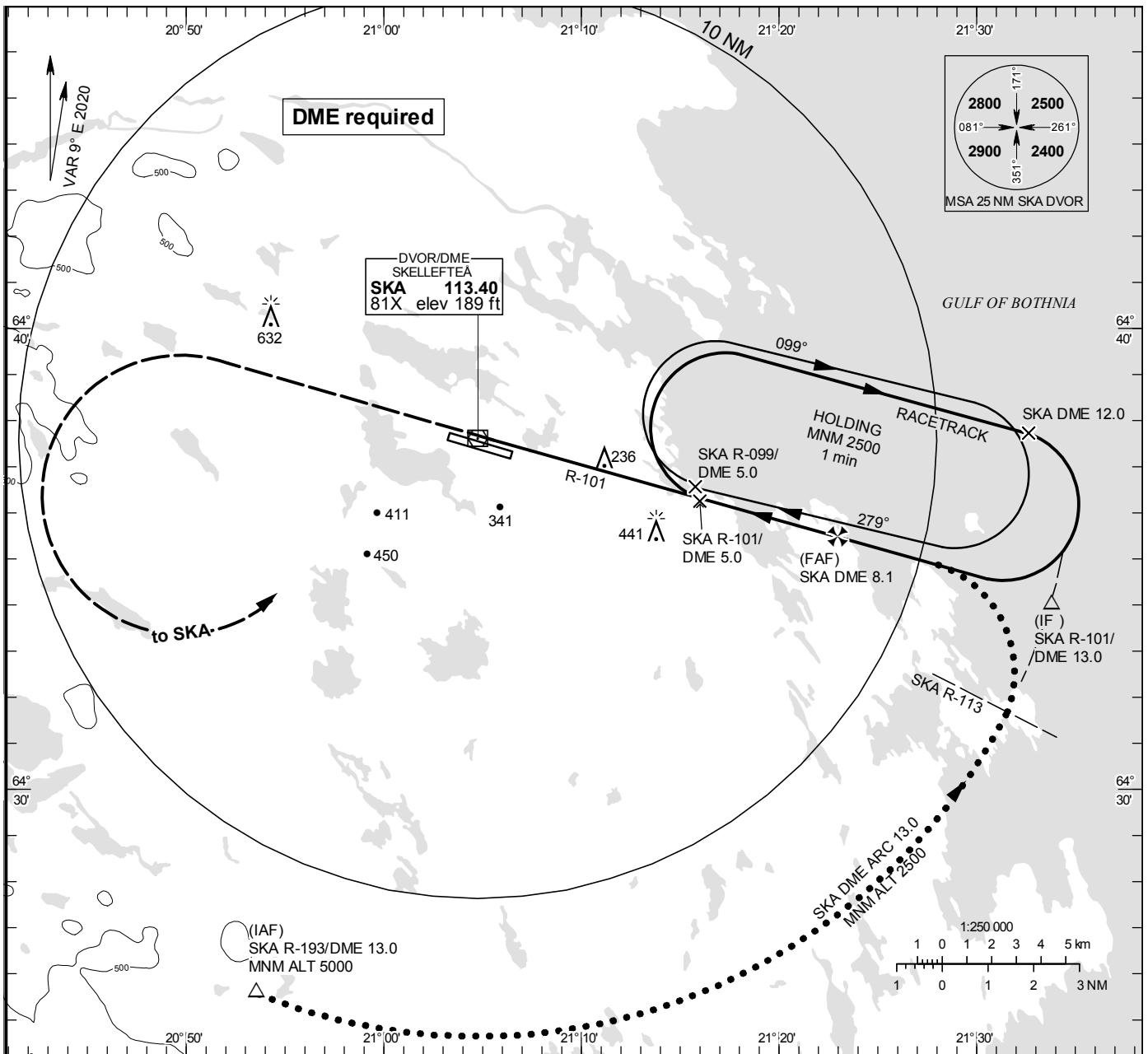


INSTRUMENT APPROACH CHART – ICAO

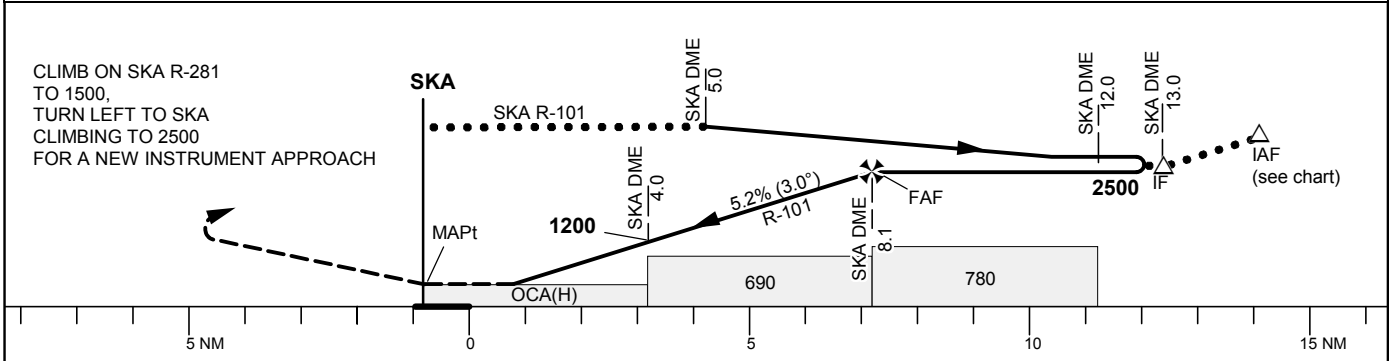
THR ELEV 122.4 ft, AD ELEV 158 ft
 OCH are related to THR.
 Circling OCH are related to AD ELEV.
 BRG are MAG
 ALT, HGT and ELEV in ft.

SKELLEFTEÅ TOWER 122.055

VOR RWY 28



TA 5000 ft AMSL Final APCH line offset 4° *Timing not authorized for defining the MAPt



OCA (H)					Final approach	Distance FAF-MAPt 8.1 NM*					
Cat of ACFT	A	B	C	D	DME SKA NM	7	6	5	4	3	2
Straight-in Approach	490(370)				ALT	2160	1840	1520	1200	880	560
					GS	kt	80	100	120	140	160
Circling	640(490)	710(560)	850(700)	1030(880)	Time	min:s	6:05	4:52	4:03	3:28	3:02
					Rate of descent	ft/min	425	530	635	745	850