

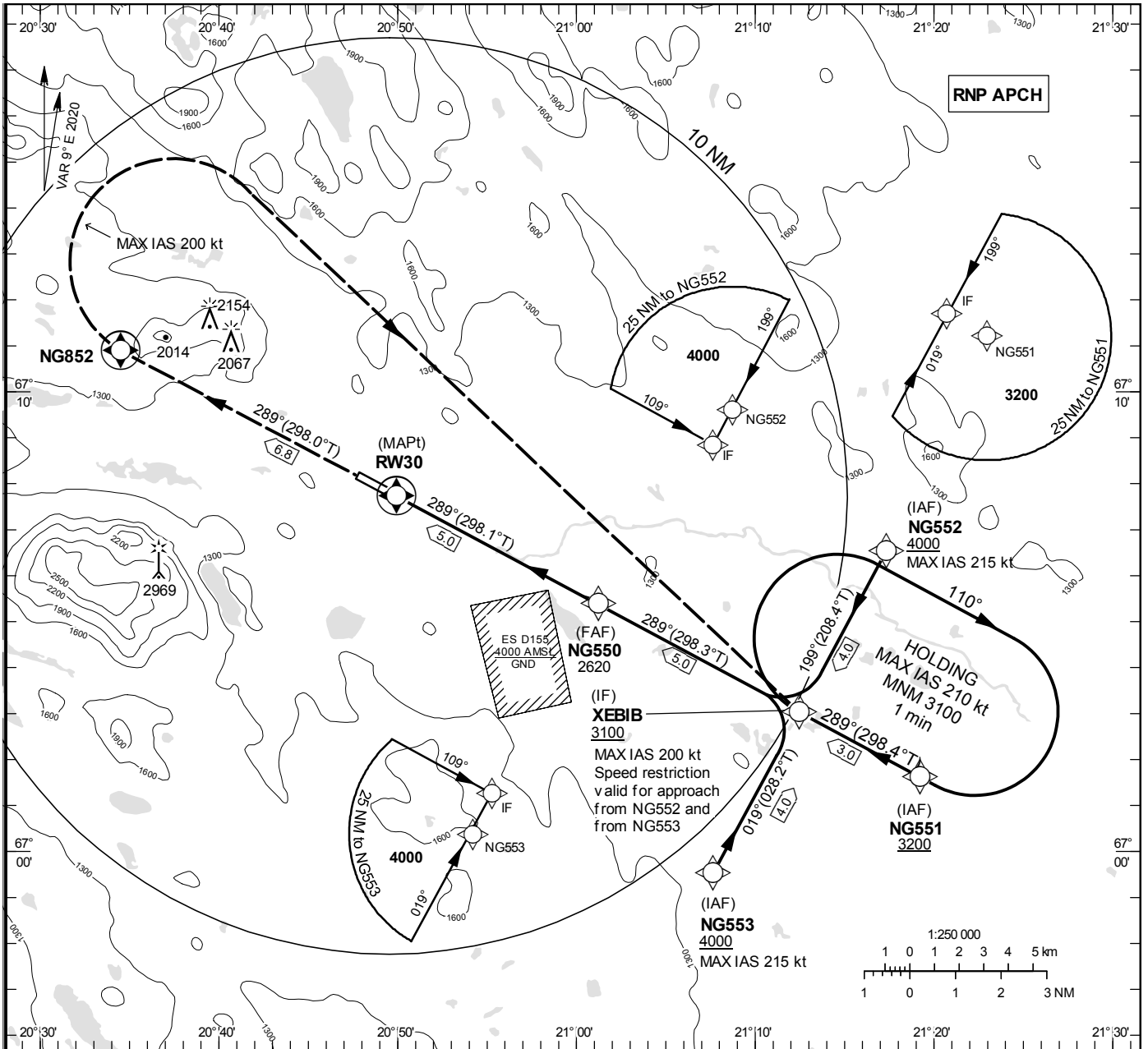
**INSTRUMENT
APPROACH
CHART – ICAO**

THR ELEV 971.0 ft, AD ELEV 1027 ft
 OCH are related to THR.
 BRG are MAG (True).
 ALT, HGT and ELEV in ft.

GÄLLIVARE
 INFORMATION 122.330

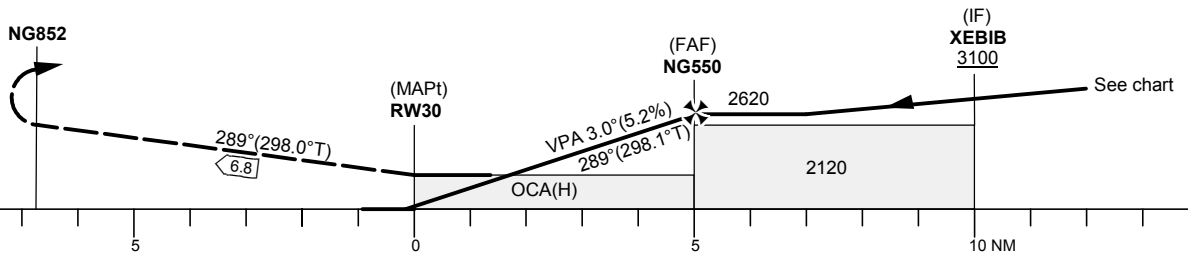
RNP RWY 30

EGNOS Ch 84239 E30A



TA 5000 ft AMSL RDH 50 ft

CLIMB STRAIGHT AHEAD TO NG852.
 TURN RIGHT (MAX IAS 200 kt) TO XEBIB
 CLIMBING TO 3100 AND JOIN XEBIB HOLDING.



Cat of ACFT	OCA (H)			Final approach		Distance FAF-MAPt 5.0 NM												
	A	B	C	Dist to RW30 (NM)	Alt	GS	Rate of descent	ft/min	ft/min	ft/min								
LPV	1313(342)	1325(354)	1333(362)	5	2620	80	425	4	100	530	3	120	635	2	140	745	160	850
LNAV	1610(640)																	

RNP RWY 30 via NG551

Path Desc	Waypoint Identifier	Fly-over	Course °M(°T)	Dist (NM)	Turn Dir	Altitude	Speed	VPA/RDH	Rec Navaid	Navigation Specification
IF	NG551	-	-	-	-	+3200	-	-	-	RNP APCH
TF	XEBIB	-	289°(298.4°)	3.0	-	+3100	-	-	-	RNP APCH

RNP RWY 30 via NG552

Path Desc	Waypoint Identifier	Fly-over	Course °M(°T)	Dist (NM)	Turn Dir	Altitude	Speed	VPA/RDH	Rec Navaid	Navigation Specification
IF	NG552	-	-	-	-	+4000	-215	-	-	RNP APCH
TF	XEBIB	-	199°(208.4°)	4.0	-	+3100	-200	-	-	RNP APCH

RNP RWY 30 via NG553

Path Desc	Waypoint Identifier	Fly-over	Course °M(°T)	Dist (NM)	Turn Dir	Altitude	Speed	VPA/RDH	Rec Navaid	Navigation Specification
IF	NG553	-	-	-	-	+4000	-215	-	-	RNP APCH
TF	XEBIB	-	019°(028.2°)	4.0	-	+3100	-200	-	-	RNP APCH

Path Desc	Waypoint Identifier	Fly-over	Course °M(°T)	Dist (NM)	Turn Dir	Altitude	Speed	VPA/RDH	Rec Navaid	Navigation Specification
IF	XEBIB	-	-	-	-	+3100	-	-	-	RNP APCH
TF	NG550	-	289°(298.3°)	5.0	-	@2620	-	-	-	RNP APCH
TF	RW30	Y	289°(298.1°)	5.0	-	@1021	-	-3.0/50	-	RNP APCH
TF	NG852	Y	289°(298.0°)	6.8	-	-	-	-	-	RNP APCH
DF	XEBIB	Y	-	-	R	+3100	-200	-	-	RNP APCH
HM	XEBIB	Y	289°(298.4°)	-	R	+3100	-210	-	-	RNAV 1

FAS Data Block

RNP RWY 30

Input data

Operation Type	0
SBAS Provider	1
Airport Identifier	ESNG
Runway	30
Runway Direction	0
Approach Performance Designator	0
Route Indicator	
Reference Path Data Selector	0
Reference Path Identifier	E30A
LTP/FTP Latitude	670743.6900N
LTP/FTP Longitude	0204955.5000E
LTP/FTP Ellipsoidal Height (metres)	324.3
FPAP Latitude	670809.6300N
Delta FPAP Latitude (seconds)	25.9400
FPAP Longitude	0204749.8600E
Delta FPAP Longitude (seconds)	-125.6400
Threshold Crossing Height	50.0
TCH Units Selector	0
Glidepath Angle (degrees)	3.00
Course Width (metres)	105.00
Length Offset (metres)	0
HAL (metres)	40.0
VAL (metres)	50.0

Output data

Data Block	10 07 0E 13 05 1E 00 00 01 30 33 05 94 FD CE 1C 58 AE F0 08 AB 20 A8 CA 00 70 2A FC F4 01 2C 01 64 00 C8 FA 3C D9 14 59
Calculated CRC Value	3CD91459

Required Additional Data

ICAO Code	ES
LTP/FTP Orthometric Height (metres)	296.0
FPAP Orthometric Height (metres)	313.0