

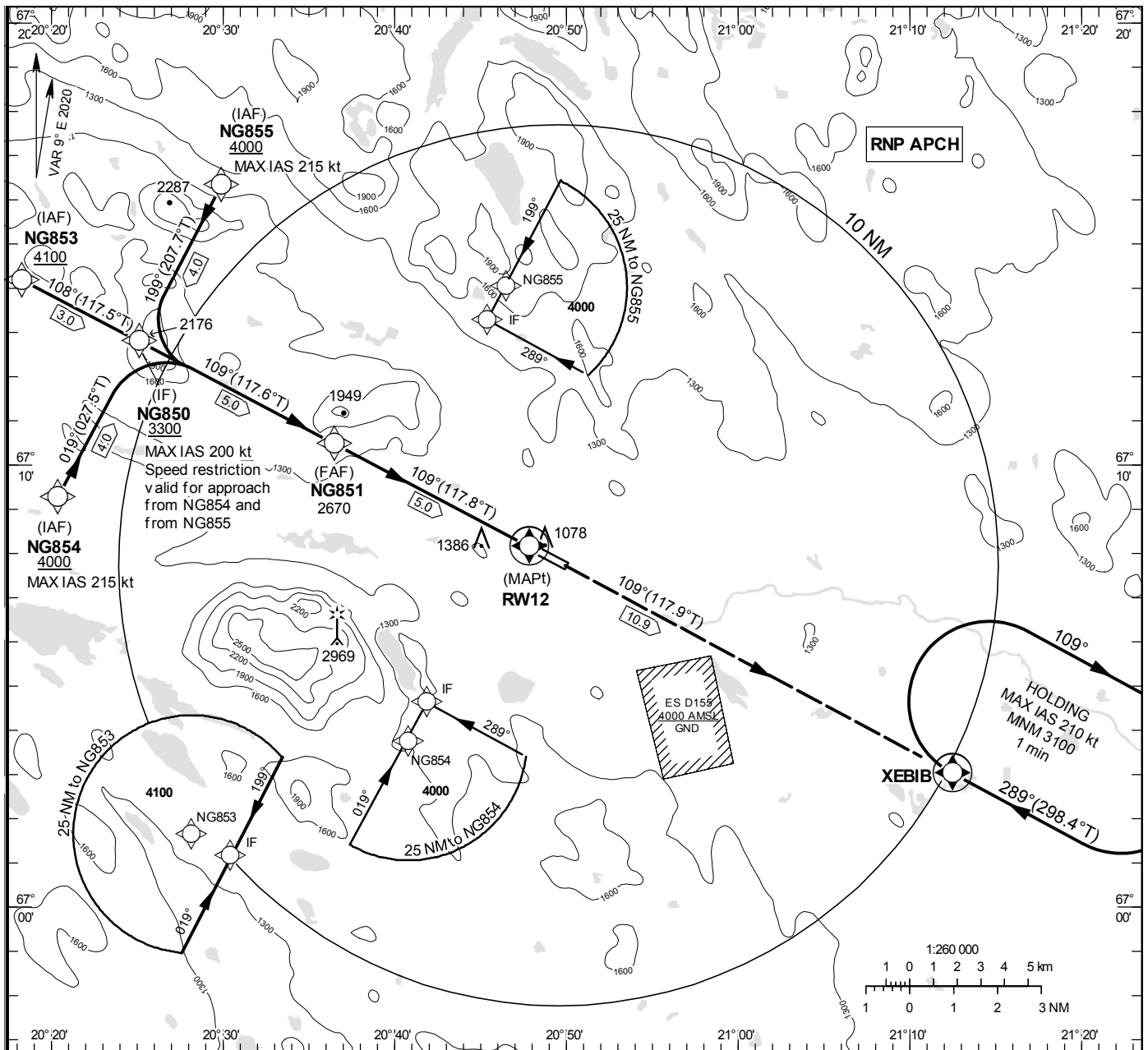
**INSTRUMENT
APPROACH
CHART – ICAO**

THR ELEV 1027 ft, AD ELEV 1027 ft
 OCH are related to THR.
 BRG are MAG (True).
 ALT, HGT and ELEV in ft.

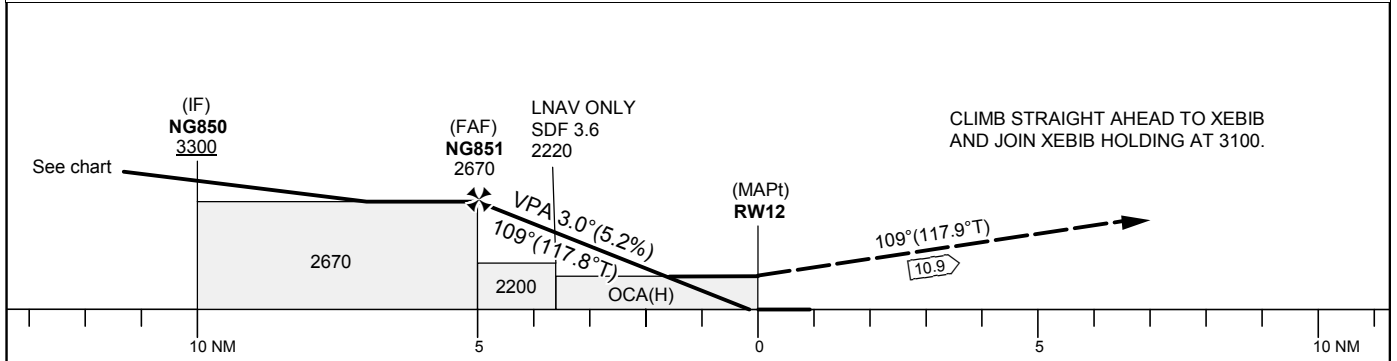
GÄLLIVARE
 INFORMATION 122.330

RNP RWY 12

EGNOS Ch 79429 E12A



TA 5000 ft AMSL RDH 50 ft



Cat of ACFT	OCA (H)			Final approach Dist to RW12	Distance FAF-MAPt 5.0 NM					
	A	B	C		5	4	3	2		
LPV	1208(181)	1220(193)	1228(201)	ALT	2670	2350	2030	1710		
LNAV	1640(620)			GS	kt	80	100	120	140	160
				Rate of descent	ft/min	425	530	635	745	850

RNP RWY 12 via NG853

Path Desc	Waypoint Identifier	Fly-over	Course °M(°T)	Dist (NM)	Turn Dir	Altitude	Speed	VPA/RDH	Rec Navaid	Navigation Specification
IF	NG853	-	-	-	-	+4100	-	-	-	RNP APCH
TF	NG850	-	108°(117.5°)	3.0	-	+3300	-	-	-	RNP APCH

RNP RWY 12 via NG854

Path Desc	Waypoint Identifier	Fly-over	Course °M(°T)	Dist (NM)	Turn Dir	Altitude	Speed	VPA/RDH	Rec Navaid	Navigation Specification
IF	NG854	-	-	-	-	+4000	-215	-	-	RNP APCH
TF	NG850	-	019°(027.5°)	4.0	-	+3300	-200	-	-	RNP APCH

RNP RWY 12 via NG855

Path Desc	Waypoint Identifier	Fly-over	Course °M(°T)	Dist (NM)	Turn Dir	Altitude	Speed	VPA/RDH	Rec Navaid	Navigation Specification
IF	NG855	-	-	-	-	+4000	-215	-	-	RNP APCH
TF	NG850	-	199°(207.7°)	4.0	-	+3300	-200	-	-	RNP APCH

Path Desc	Waypoint Identifier	Fly-over	Course °M(°T)	Dist (NM)	Turn Dir	Altitude	Speed	VPA/RDH	Rec Navaid	Navigation Specification
IF	NG850	-	-	-	-	+3300	-	-	-	RNP APCH
TF	NG851	-	109°(117.6°)	5.0	-	@2670	-	-	-	RNP APCH
TF	RW12	Y	109°(117.8°)	5.0	-	@1077	-	-3.0/50	-	RNP APCH
TF	XEBIB	Y	109°(117.9°)	10.9	-	-	-	-	-	RNP APCH
HM	XEBIB	Y	289°(298.4°)	-	R	+3100	-210	-	-	RNAV 1

FAS Data Block

RNP RWY 12

Input data

Operation Type	0
SBAS Provider	1
Airport Identifier	ESNG
Runway	12
Runway Direction	0
Approach Performance Designator	0
Route Indicator	
Reference Path Data Selector	0
Reference Path Identifier	E12A
LTP/FTP Latitude	670809.6300N
LTP/FTP Longitude	0204749.8600E
LTP/FTP Ellipsoidal Height (metres)	341.4
FPAP Latitude	670743.6900N
Delta FPAP Latitude (seconds)	-25.9400
FPAP Longitude	0204955.5000E
Delta FPAP Longitude (seconds)	125.6400
Threshold Crossing Height	50.0
TCH Units Selector	0
Glidepath Angle (degrees)	3.00
Course Width (metres)	105.00
Length Offset (metres)	0
HAL (metres)	40.0
VAL (metres)	50.0

Output data

Data Block	10 07 0E 13 05 0C 00 00 01 32 31 05 3C C8 CF 1C C8 D8 EC 08 56 21 58 35 FF 90 D5 03 F4 01 2C 01 64 00 C8 FA 16 5B B9 58
Calculated CRC Value	165BB958

Required Additional Data

ICAO Code	ES
LTP/FTP Orthometric Height (metres)	313.0
FPAP Orthometric Height (metres)	296.0