

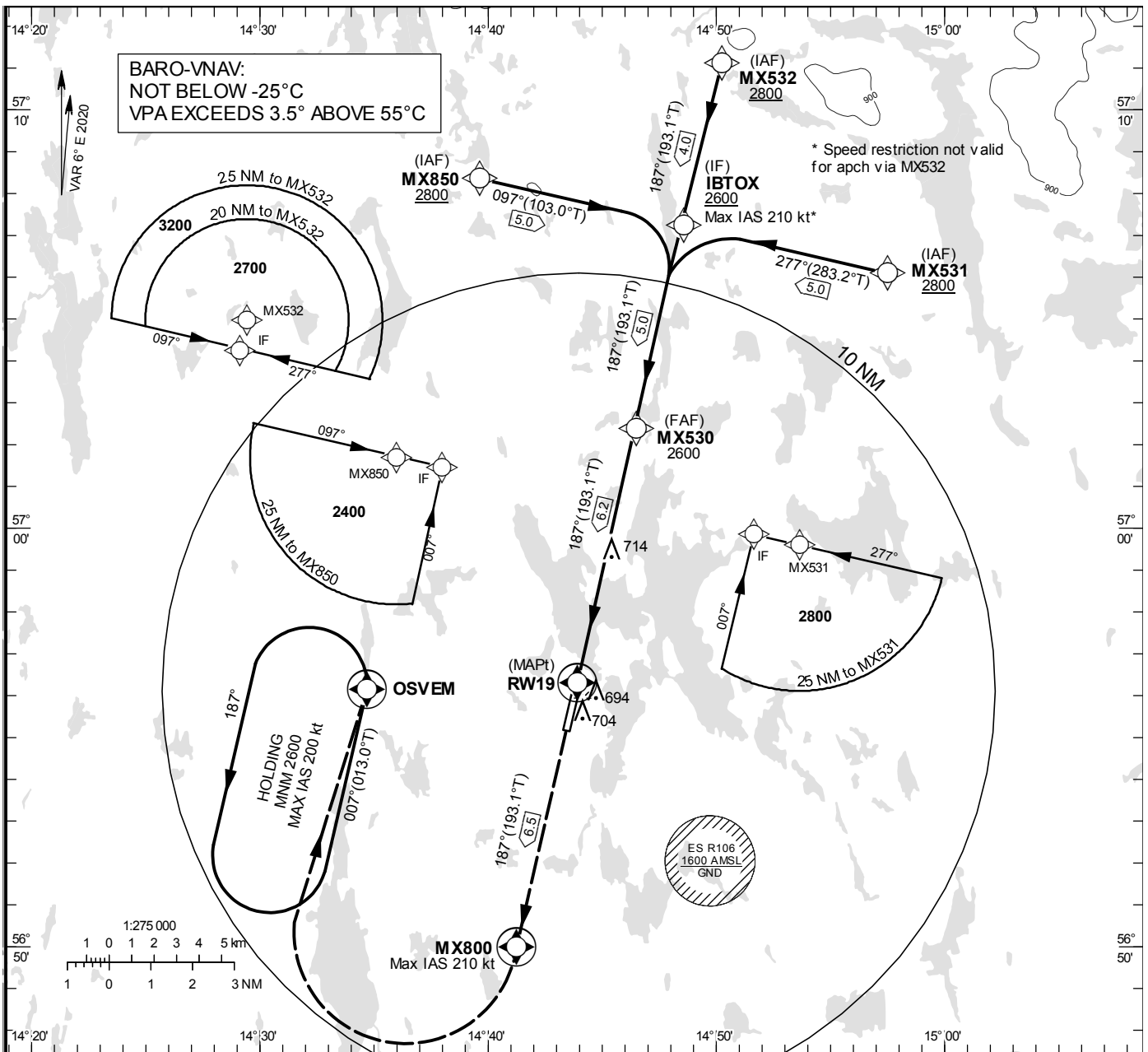
**INSTRUMENT
APPROACH
CHART – ICAO**

THR ELEV 563.2 ft, AD ELEV 610 ft
 OCH are related to THR.
 BRG are MAG (True).
 ALT, HGT and ELEV in ft.

KRONOBERG TOWER 118.155

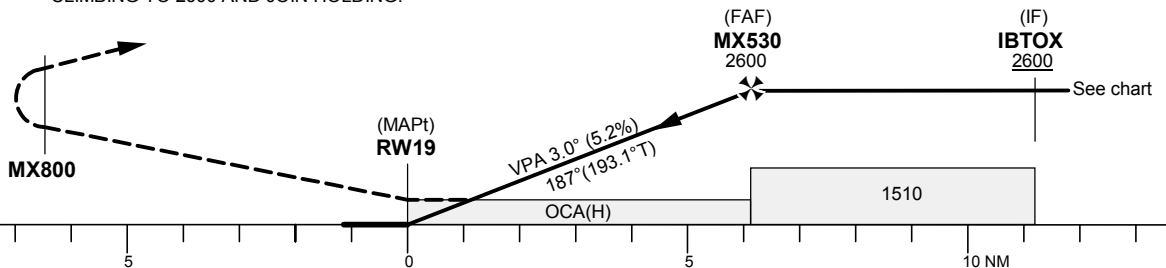
RNP RWY 19

EGNOS Ch 50847 E 19A



TA 5000 ft AMSL RDH 50.0 ft

CLIMB STRAIGHT AHEAD TO MX800,
 TURN RIGHT (MAX IAS 210 kt) TO OSVEM,
 CLIMBING TO 2600 AND JOIN HOLDING.



| Cat of ACFT | OCA (H) | | | | Final approach Dist to RWY19 (NM) | Distance FAF-MAPt 6.2 NM | | | | | | |
|-------------|----------|----------|----------|----------|--------------------------------------|--------------------------|------|------|------|------|-----|-----|
| | A | B | C | D | | 6 | 5 | 4 | 3 | 2 | | |
| LPV | 835(272) | 847(284) | 855(292) | 865(302) | ALT | 2520 | 2210 | 1890 | 1570 | 1250 | | |
| LNAV/VNAV | 830(267) | 840(277) | 850(287) | 860(297) | GS | kt | 80 | 100 | 120 | 140 | 160 | 180 |
| LNAV | 960(400) | | | | Rate of descent | ft/min | 425 | 535 | 640 | 745 | 850 | 960 |

RNP RWY 19 via MX531

| Path Desc | Waypoint Identifier | Fly-over | Course °M(°T) | Dist (NM) | Turn Dir | Altitude | Speed | VPA/RDH | Rec Navaid | Navigation Specification |
|-----------|---------------------|----------|---------------|-----------|----------|----------|-------|---------|------------|--------------------------|
| IF | MX531 | - | - | - | - | +2800 | - | - | - | RNP APCH |
| TF | IBTOX | - | 277°(283.2°) | 5.0 | - | +2600 | -210 | - | - | RNP APCH |

RNP RWY 19 via MX532

| Path Desc | Waypoint Identifier | Fly-over | Course °M(°T) | Dist (NM) | Turn Dir | Altitude | Speed | VPA/RDH | Rec Navaid | Navigation Specification |
|-----------|---------------------|----------|---------------|-----------|----------|----------|-------|---------|------------|--------------------------|
| IF | MX532 | - | - | - | - | +2800 | - | - | - | RNP APCH |
| TF | IBTOX | - | 187°(193.1°) | 4.0 | - | +2600 | - | - | - | RNP APCH |

RNP RWY 19 via MX850

| Path Desc | Waypoint Identifier | Fly-over | Course °M(°T) | Dist (NM) | Turn Dir | Altitude | Speed | VPA/RDH | Rec Navaid | Navigation Specification |
|-----------|---------------------|----------|---------------|-----------|----------|----------|-------|---------|------------|--------------------------|
| IF | MX850 | - | - | - | - | +2800 | - | - | - | RNP APCH |
| TF | IBTOX | - | 097°(103.0°) | 5.0 | - | +2600 | -210 | - | - | RNP APCH |

| Path Desc | Waypoint Identifier | Fly-over | Course °M(°T) | Dist (NM) | Turn Dir | Altitude | Speed | VPA/RDH | Rec Navaid | Navigation Specification |
|-----------|---------------------|----------|---------------|-----------|----------|----------|-------|---------|------------|--------------------------|
| IF | IBTOX | - | - | - | - | +2600 | - | - | - | RNP APCH |
| TF | MX530 | - | 187°(193.1°) | 5.0 | - | @2600 | - | - | - | RNP APCH |
| TF | RW19 | Y | 187°(193.1°) | 6.2 | - | @613 | - | -3.0/50 | - | RNP APCH |
| CF | MX800 | Y | 187°(193.1°) | 6.5 | - | - | -210 | - | VX | RNP APCH |
| DF | OSVEM | Y | - | - | R | +2600 | - | - | - | RNP APCH |
| HM | OSVEM | Y | 007°(013.0°) | - | L | +2600 | -200 | - | - | RNAV 1 |

FAS Data Block

RNP RWY 19

Input data

| | |
|-------------------------------------|---------------|
| Operation Type | 0 |
| SBAS Provider | 1 |
| Airport Identifier | ESMX |
| Runway | 19 |
| Runway Direction | 0 |
| Approach Performance Designator | 0 |
| Route Indicator | |
| Reference Path Data Selector | 0 |
| Reference Path Identifier | E19A |
| LTP/FTP Latitude | 565618.0500N |
| LTP/FTP Longitude | 0144354.8200E |
| LTP/FTP Ellipsoidal Height (metres) | 204.2 |
| FPAP Latitude | 565508.9140N |
| Delta FPAP Latitude (seconds) | -69.1360 |
| FPAP Longitude | 0144325.5015E |
| Delta FPAP Longitude (seconds) | -29.3185 |
| Threshold Crossing Height | 50.0 |
| TCH Units Selector | 0 |
| Glidepath Angle (degrees) | 3.00 |
| Course Width (metres) | 105.00 |
| Length Offset (metres) | 0 |
| HAL (metres) | 40.0 |
| VAL (metres) | 50.0 |

Output data

| | |
|----------------------|--|
| Data Block | 10 18 0D 13 05 13 00 00 01 39 31 05 04 6F 6F 18 88 7E 52 06 FA 1B E0 E3 FD F3 1A FF F4 01 2C 01 64 00 C8 FA AF 5C 98 F7 |
| Calculated CRC Value | AF5C98F7 |

Required Additional Data

| | |
|-------------------------------------|-------|
| ICAO Code | ES |
| LTP/FTP Orthometric Height (metres) | 171.6 |
| FPAP Orthometric Height (metres) | 187.0 |