

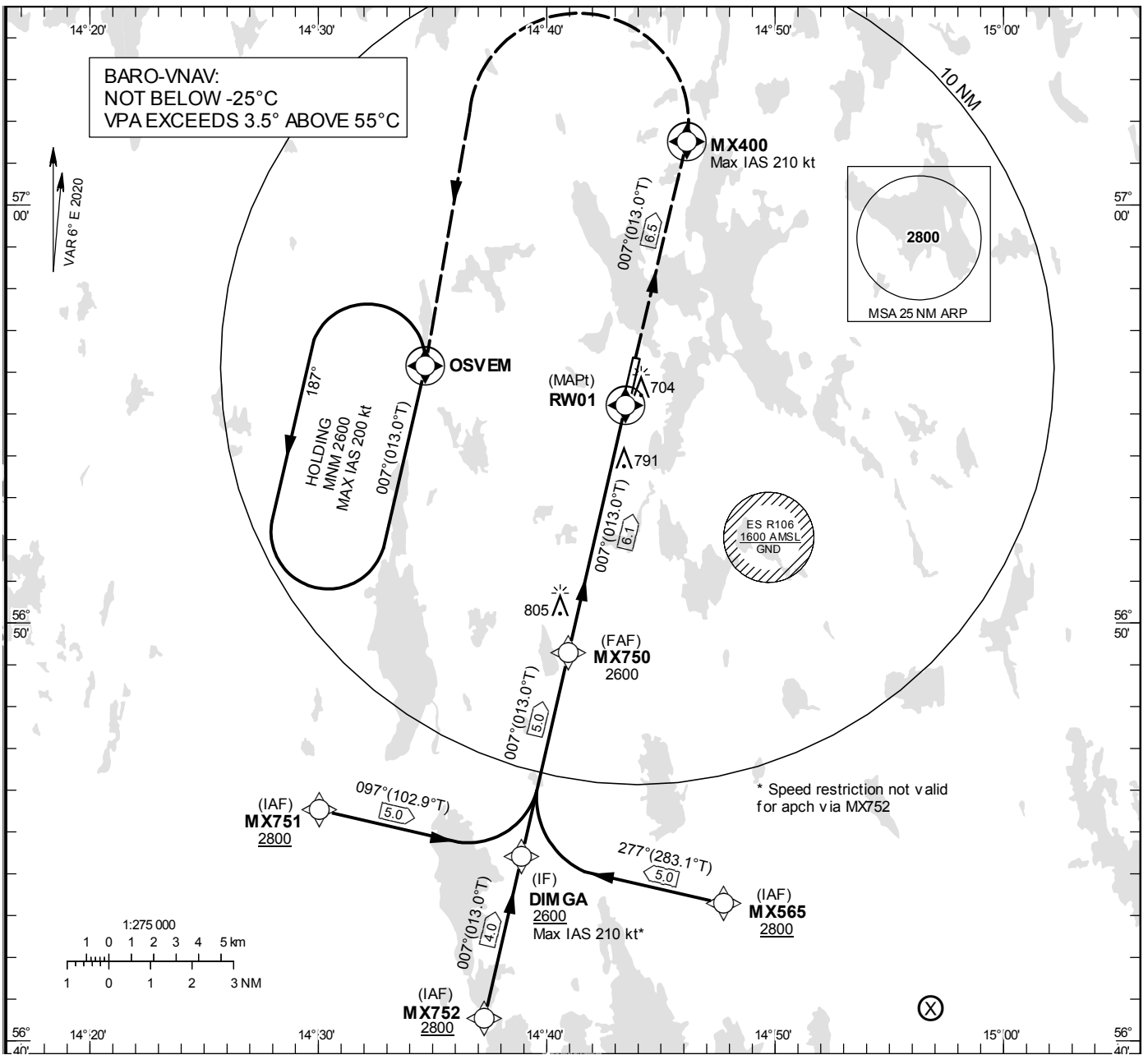
INSTRUMENT APPROACH CHART – ICAO

THR ELEV 610 ft, AD ELEV 610 ft
 OCH are related to THR.
 BRG are MAG (True).
 ALT, HGT and ELEV in ft.

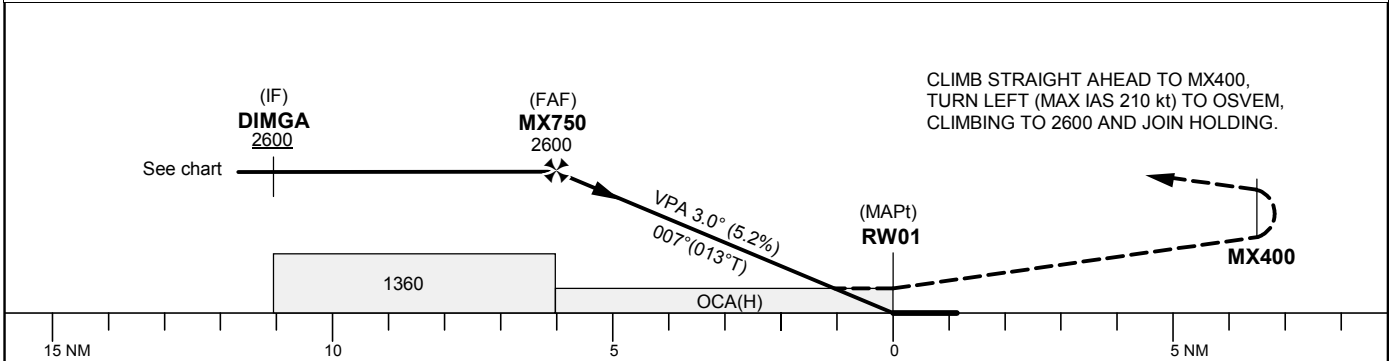
KRONOBERG TOWER 118.155

RNP RWY 01

EGNOS Ch 48466 E 01A



TA 5000 ft AMSL RDH 50.0 ft



Cat of ACFT	OCA (H)				Final approach Dist to RW01 (NM)	Distance FAF-MAPT 6.1 NM						
	A	B	C	D		6	5	4	3	2		
LPV	835(225)	847(237)	855(245)	865(255)	ALT	2570	2250	1930	1620	1300		
LNAV/VNAV	930(320)	940(330)	950(340)	960(350)	GS	kt	80	100	120	140	160	180
LNAV	1060(450)				Rate of descent	ft/min	425	535	640	745	850	960

RNP RWY 01 via MX751

Path Desc	Waypoint Identifier	Fly-over	Course °M(°T)	Dist (NM)	Turn Dir	Altitude	Speed	VPA/RDH	Rec Navaid	Navigation Specification
IF	MX751	-	-	-	-	+2800	-	-	-	RNP APCH
TF	DIMGGA	-	097°(102.9°)	5.0	-	+2600	-210	-	-	RNP APCH

RNP RWY 01 via MX752

Path Desc	Waypoint Identifier	Fly-over	Course °M(°T)	Dist (NM)	Turn Dir	Altitude	Speed	VPA/RDH	Rec Navaid	Navigation Specification
IF	MX752	-	-	-	-	+2800	-	-	-	RNP APCH
TF	DIMGGA	-	007°(013.0°)	4.0	-	+2600	-	-	-	RNP APCH

RNP RWY 01 via MX565

Path Desc	Waypoint Identifier	Fly-over	Course °M(°T)	Dist (NM)	Turn Dir	Altitude	Speed	VPA/RDH	Rec Navaid	Navigation Specification
IF	MX565	-	-	-	-	+2800	-	-	-	RNP APCH
TF	DIMGGA	-	277°(283.1°)	5.0	-	+2600	-210	-	-	RNP APCH

Path Desc	Waypoint Identifier	Fly-over	Course °M(°T)	Dist (NM)	Turn Dir	Altitude	Speed	VPA/RDH	Rec Navaid	Navigation Specification
IF	DIMGGA	-	-	-	-	+2600	-	-	-	RNP APCH
TF	MX750	-	007°(013.0°)	5.0	-	@2600	-	-	-	RNP APCH
TF	RW01	Y	007°(013.0°)	6.1	-	@660	-	-3.0/50	-	RNP APCH
CF	MX400	Y	007°(013.0°)	6.5	-	-	-210	-	JX	RNP APCH
DF	OSVEM	Y	-	-	L	+2600	-	-	-	RNP APCH
HM	OSVEM	Y	007°(013.0°)	-	L	+2600	-200	-	-	RNAV 1

FAS Data Block

RNP RWY 01

Input data

Operation Type	0
SBAS Provider	1
Airport Identifier	ESMX
Runway	1
Runway Direction	0
Approach Performance Designator	0
Route Indicator	
Reference Path Data Selector	0
Reference Path Identifier	E01A
LTP/FTP Latitude	565511.7200N
LTP/FTP Longitude	0144326.6900E
LTP/FTP Ellipsoidal Height (metres)	218.8
FPAP Latitude	565618.0500N
Delta FPAP Latitude (seconds)	66.3300
FPAP Longitude	0144354.8200E
Delta FPAP Longitude (seconds)	28.1300
Threshold Crossing Height	50.0
TCH Units Selector	0
Glidepath Angle (degrees)	3.00
Course Width (metres)	105.00
Length Offset (metres)	0
HAL (metres)	40.0
VAL (metres)	50.0

Output data

Data Block	10 18 0D 13 05 01 00 00 01 31 30 05 D0 68 6D 18 C4 A2 51 06 8C 1C 34 06 02 C4 DB 00 F4 01 2C 01 64 00 C8 FA 61 B3 45 0A
Calculated CRC Value	61B3450A

Required Additional Data

ICAO Code	ES
LTP/FTP Orthometric Height (metres)	185.9
FPAP Orthometric Height (metres)	171.6