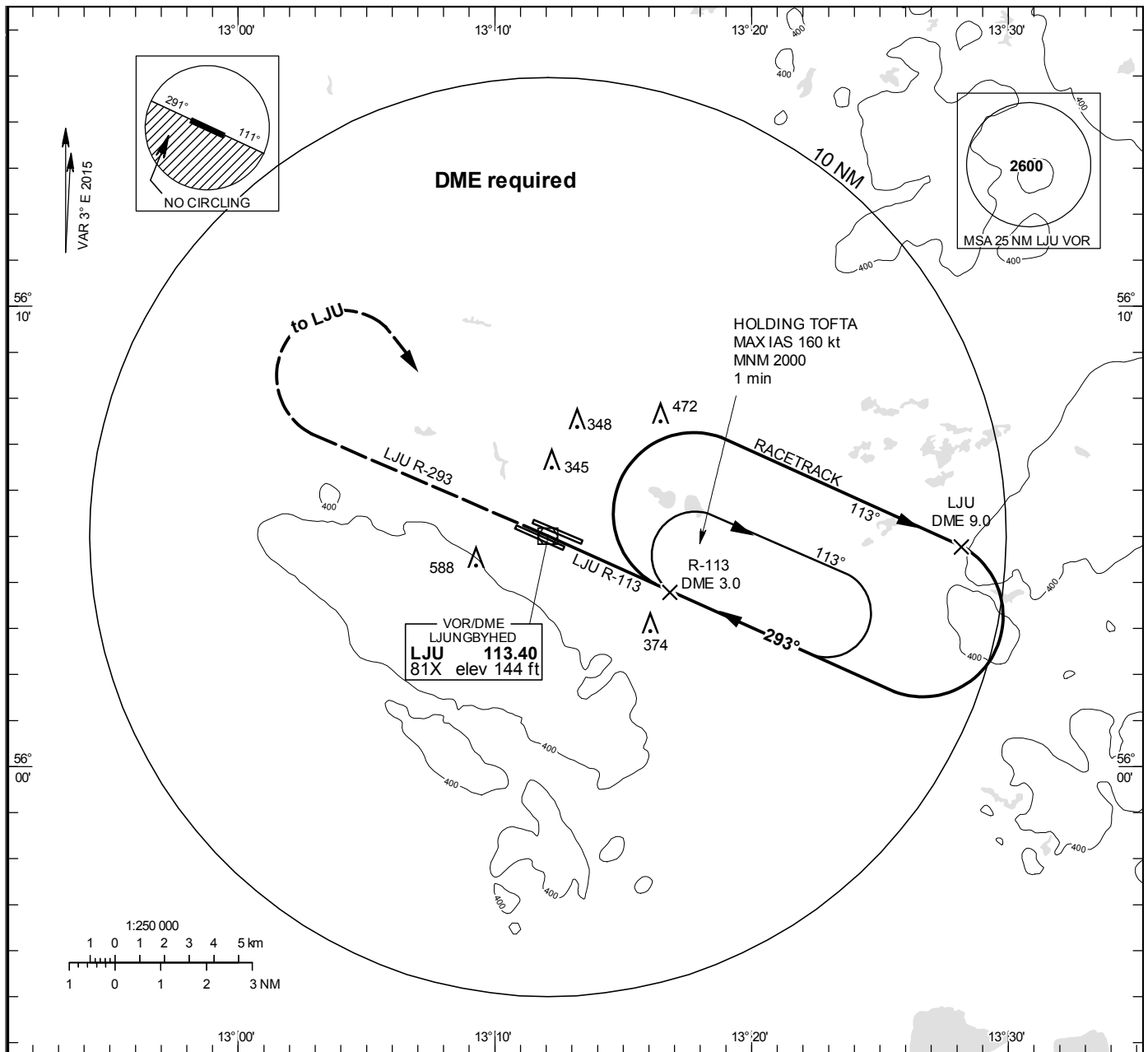


VOR RWY 29L

LJUNGBYHED TOWER	130.705
LJUNGBYHED GROUND	121.655
LJUNGBYHED CONTROL	129.555

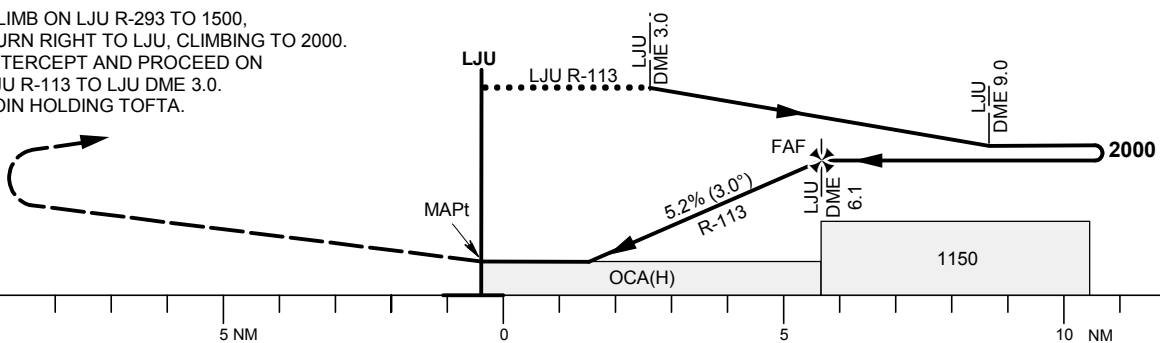
THR ELEV 136.1 ft, AD ELEV 139 ft  
 OCH are related to THR.  
 Circling OCH are related to AD ELEV.  
 BRG are MAG  
 ALT: HGT and ELEV in ft.

INSTRUMENT  
 APPROACH  
 CHART - ICAO



TA 5000 ft AMSL Final APCH line offset 2° Max speed in racetrack 230 kt IAS \*Timing not authorized for defining the MAPt

CLIMB ON LJU R-293 TO 1500,  
 TURN RIGHT TO LJU, CLIMBING TO 2000.  
 INTERCEPT AND PROCEED ON  
 LJU R-113 TO LJU DME 3.0.  
 JOIN HOLDING TOFTA.



Cat of ACFT	OCA (H)			Final approach						
	A	B	C	DME LJU NM	6	5	4	3	2	
Straight-in Approach	520 (390)	530 (400)	550 (420)	ALT	1970	1660	1340	1020	700	
Circling NE RWY	640 (510)	650 (520)	870 (740)	GS	kt	80	100	120	140	160
				Time	min:s	4:33	3:39	3:02	2:36	2:17
				Rate of descent	ft/min	425	530	635	745	850