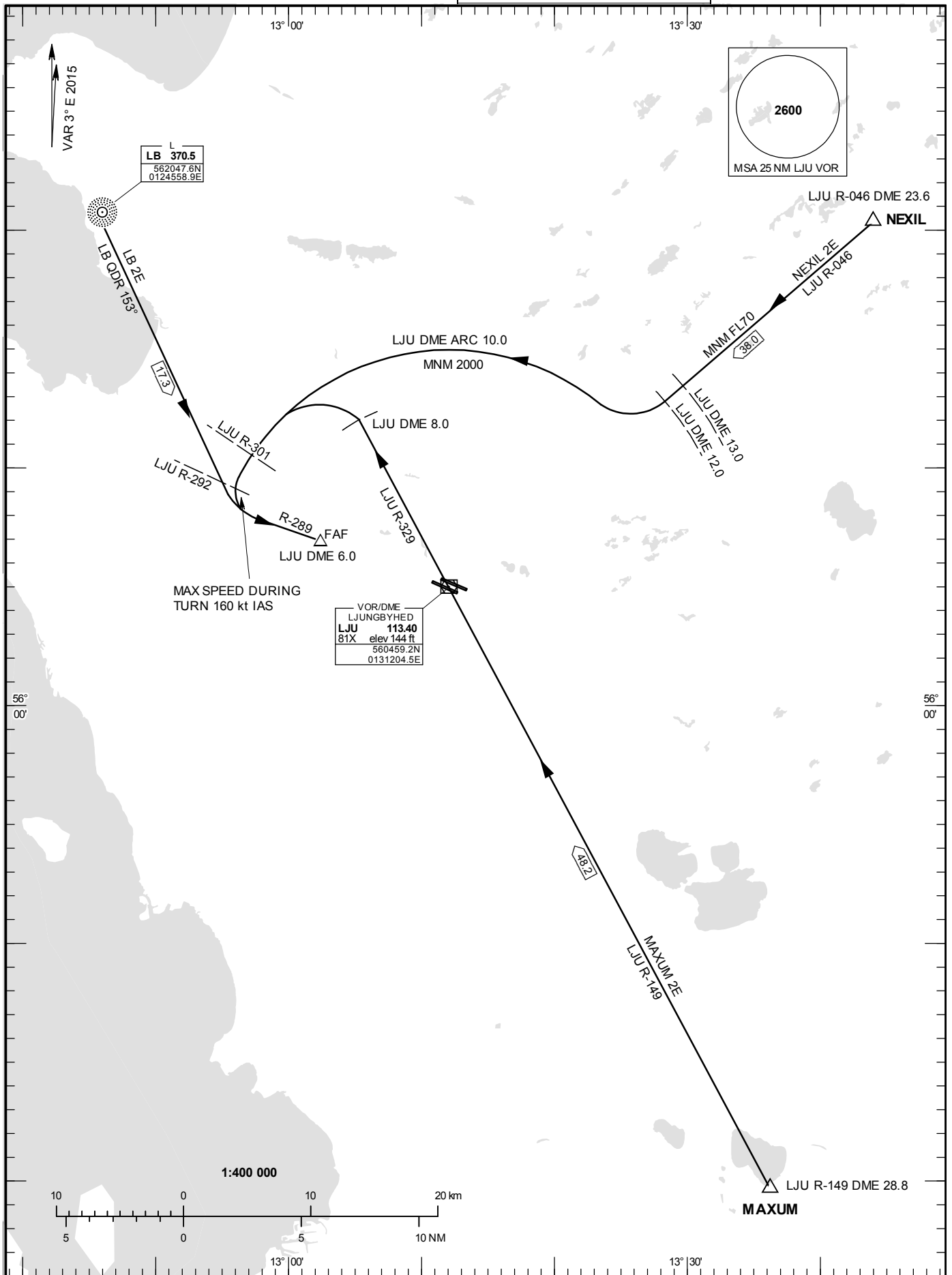


STANDARD INSTRUMENT
DEPARTURE AND ARRIVAL
CHART (SID/STAR) - ICAO

HGT and ALT in ft
BRG are MAG
TA 5000 ft AMSL

LJUNGBYHED TOWER	130.705
LJUNGBYHED GROUND	121.655
LJUNGBYHED CONTROL	129.555

STAR RWY 11R



ARRIVAL (STAR) RWY 11R

REMARK

Descent to a minimum altitude for an arrival route must not be initiated until an air traffic control clearance to this altitude or an approach clearance has been received.

LIMA BRAVO TWO ECHO ARRIVAL (LB 2E)

At LB proceed on LB QDR 153°. At LJU R-292 turn left to intercept LJU R-289, not below 2000 ft until FAF LJU DME 6.0.

MAXUM TWO ECHO ARRIVAL (MAXUM 2E)

At MAXUM, intercept LJU R-149 and proceed to LJU. At LJU intercept and proceed on LJU R-329. At LJU DME 8.0, turn left to establish on LJU DME ARC 10.0 not below 2000 ft. At LJU R-301 turn left (max speed 160 kt IAS during turn) to intercept LJU R-289, not below 2000 ft until FAF LJU DME 6.0.

NEXIL TWO ECHO ARRIVAL (NEXIL 2E)

At NEXIL intercept LJU R-046, not below FL70 until LJU DME 13.0. At LJU DME 12.0 turn right, intercept and proceed on LJU DME ARC 10, not below 2000 ft. At LJU R-301 turn left (max speed 160 kt IAS during turn) to intercept R-289 not below 2000 ft until FAF LJU DME 6.0.