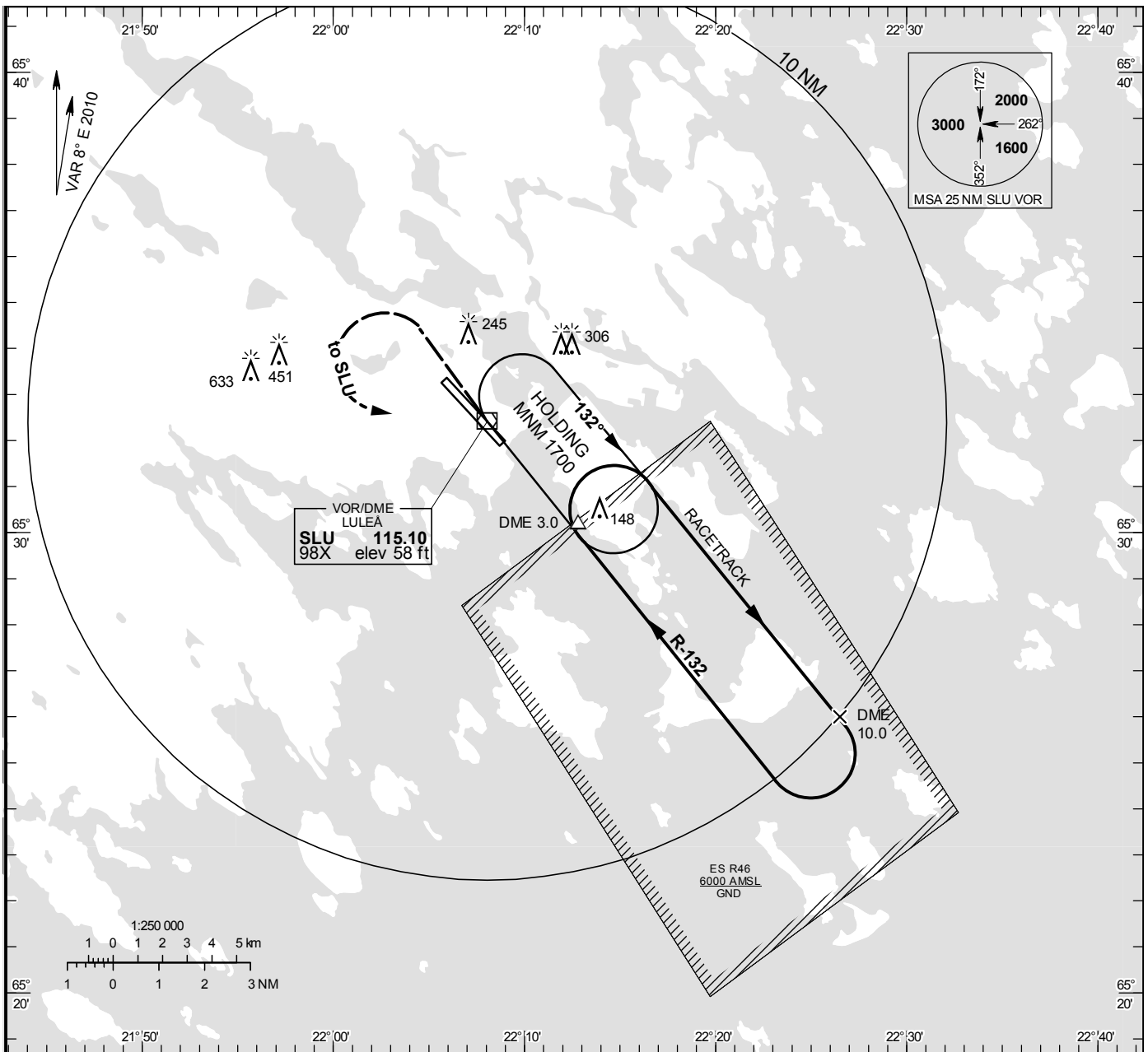


**INSTRUMENT APPROACH CHART – ICAO**

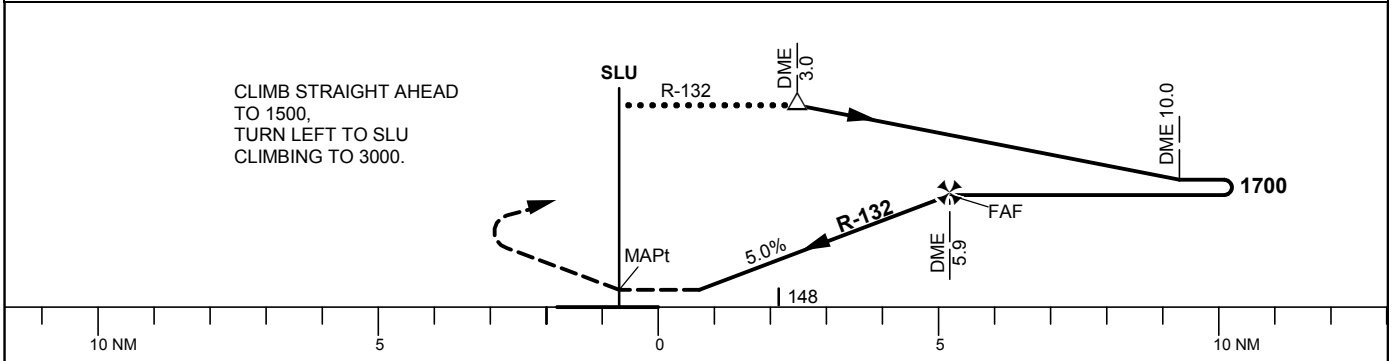
**THR ELEV 21.0 ft, AD ELEV 65 ft**  
 OCH are related to THR.  
 Circling OCH are related to AD ELEV.  
 BRG are MAG  
 ALT, HGT and ELEV in ft.

KALLAX TOWER	128.200
KALLAX CONTROL	125.450

**VOR/DME 32**



**TA 5000 ft AMSL** Final APCH line offset 3° FM QFU 309° \*Timing not authorized for defining the MAPt



Cat of ACFT	OCA (H)				Final approach		Distance FAF-MAPt 5.9 NM*			
	A	B	C	D	DME SLU NM	ALT	5	4	3	2
Straight-in Approach	400 (380)				1430	1130	820	140	160	180
Circling	540 (480)	600 (540)	850 (780)	1030 (970)	GS	kt	80	100	120	140
					Time	min:s	4:26	3:32	2:57	2:32
					Rate of descent	ft/min	405	510	610	710