

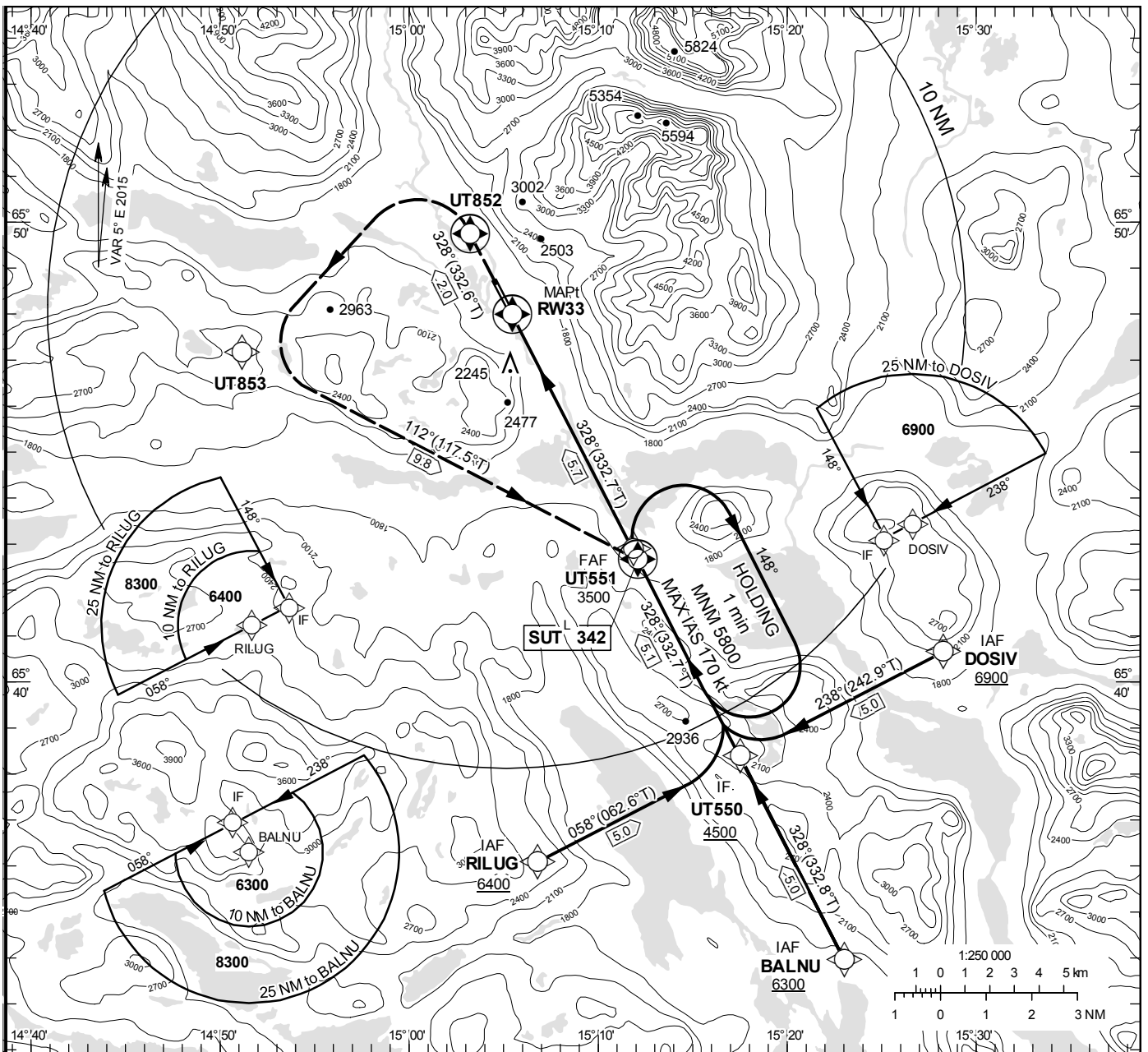
INSTRUMENT APPROACH CHART – ICAO

THR ELEV 1502.5 ft, AD ELEV 1503 ft
 OCH are related to THR.
 BRG are MAG (True).
 ALT, HGT and ELEV in ft.

HEMAVAN INFORMATION 122.980

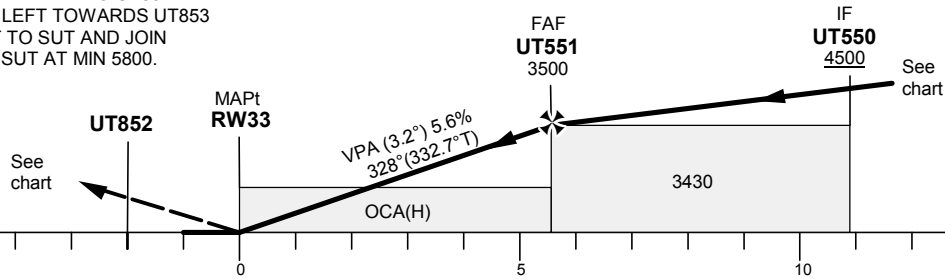
RNP RWY 33

EGNOS Ch 55015 E33A



TA 9000 ft AMSL RDH 50 ft

CLIMB STRAIGHT AHEAD TO UT852.
 AT UT852 TURN LEFT TOWARDS UT853
 AND TURN LEFT TO SUT AND JOIN
 RNAV HOLDING SUT AT MIN 5800.



Cat of ACFT	OCA (H)		Final approach Dist to RW 33	Distance FAF-MAPt 5.7 NM					
	A	B		5	4	3			
LPV	2376 (874)	2388 (886)	ALT	3250	2910	2570			
RNAV	2840 (1340)	2840 (1340)	GS	kt	80	100	120	130	140
			Rate of descent	ft/min	455	565	680	740	795

RNP RWY 33 via BALNU

Path Desc	Waypoint Identifier	Fly-over	Course °M(°T)	Dist (NM)	Turn Dir	Altitude	Speed	VPA/RDH	Rec Navaid	Navigation Specification
IF	BALNU	-	-	-	-	+6300	-	-	-	RNP APCH
TF	UT550	-	328 ⁰ (332.8 ⁰)	5.0	-	+4500	-	-	-	RNP APCH

RNP RWY 33 via DOSIV

Path Desc	Waypoint Identifier	Fly-over	Course °M(°T)	Dist (NM)	Turn Dir	Altitude	Speed	VPA/RDH	Rec Navaid	Navigation Specification
IF	DOSIV	-	-	-	-	+6900	-	-	-	RNP APCH
TF	UT550	-	238 ⁰ (242.9 ⁰)	5.0	-	+4500	-	-	-	RNP APCH

RNP RWY 33 via RILUG

Path Desc	Waypoint Identifier	Fly-over	Course °M(°T)	Dist (NM)	Turn Dir	Altitude	Speed	VPA/RDH	Rec Navaid	Navigation Specification
IF	RILUG	-	-	-	-	+6400	-	-	-	RNP APCH
TF	UT550	-	058 ⁰ (062.6 ⁰)	5.0	-	+4500	-	-	-	RNP APCH

Path Desc	Waypoint Identifier	Fly-over	Course °M(°T)	Dist (NM)	Turn Dir	Altitude	Speed	VPA/RDH	Rec Navaid	Navigation Specification
IF	UT550	-	-	-	-	+4500	-	-	-	RNP APCH
TF	UT551	-	328 ⁰ (332.7 ⁰)	5.1	-	@3500	-	-	-	RNP APCH
TF	RW33	Y	328 ⁰ (332.7 ⁰)	5.7	-	@1552	-	-3.2/50	-	RNP APCH
TF	UT852	Y	328 ⁰ (332.6 ⁰)	2.0	-	-	-	-	-	RNP APCH
DF	UT853	-	-	-	L	-	-	-	-	RNP APCH
TF	SUT	Y	112 ⁰ (117.5 ⁰)	9.8	L	+5800	-	-	-	RNP APCH
HM	SUT	Y	328 ⁰ (332.7 ⁰)	-	R	+5800	-170	-	-	RNAV 1

FAS Data Block

RNP RWY 33

Input data

Operation Type	0
SBAS Provider	1
Airport Identifier	ESUT
Runway	33
Runway Direction	0
Approach Performance Designator	0
Route Indicator	
Reference Path Data Selector	0
Reference Path Identifier	E33A
LTP/FTP Latitude	654758.2900N
LTP/FTP Longitude	0150527.7800E
LTP/FTP Ellipsoidal Height (metres)	490.6
FPAP Latitude	654842.7610N
Delta FPAP Latitude (seconds)	44.4710
FPAP Longitude	0150431.4850E
Delta FPAP Longitude (seconds)	-56.2950
Threshold Crossing Height	15.0
TCH Units Selector	1
Glidepath Angle (degrees)	3.20
Course Width (metres)	105.00
Length Offset (metres)	112
HAL (metres)	40.0
VAL (metres)	50.0

Output data

Data Block	10 14 15 13 05 21 00 00 01 33 33 05 A4 F3 3C 1C C8 F3 79 06 2A 27 6E 5B 01 32 48 FE 2C 81 40 01 64 0E C8 FA 87 9F C6 6C
Calculated CRC Value	879FC66C

Required Additional Data

ICAO Code	ES
LTP/FTP Orthometric Height (metres)	457.7
FPAP Orthometric Height (metres)	458.1