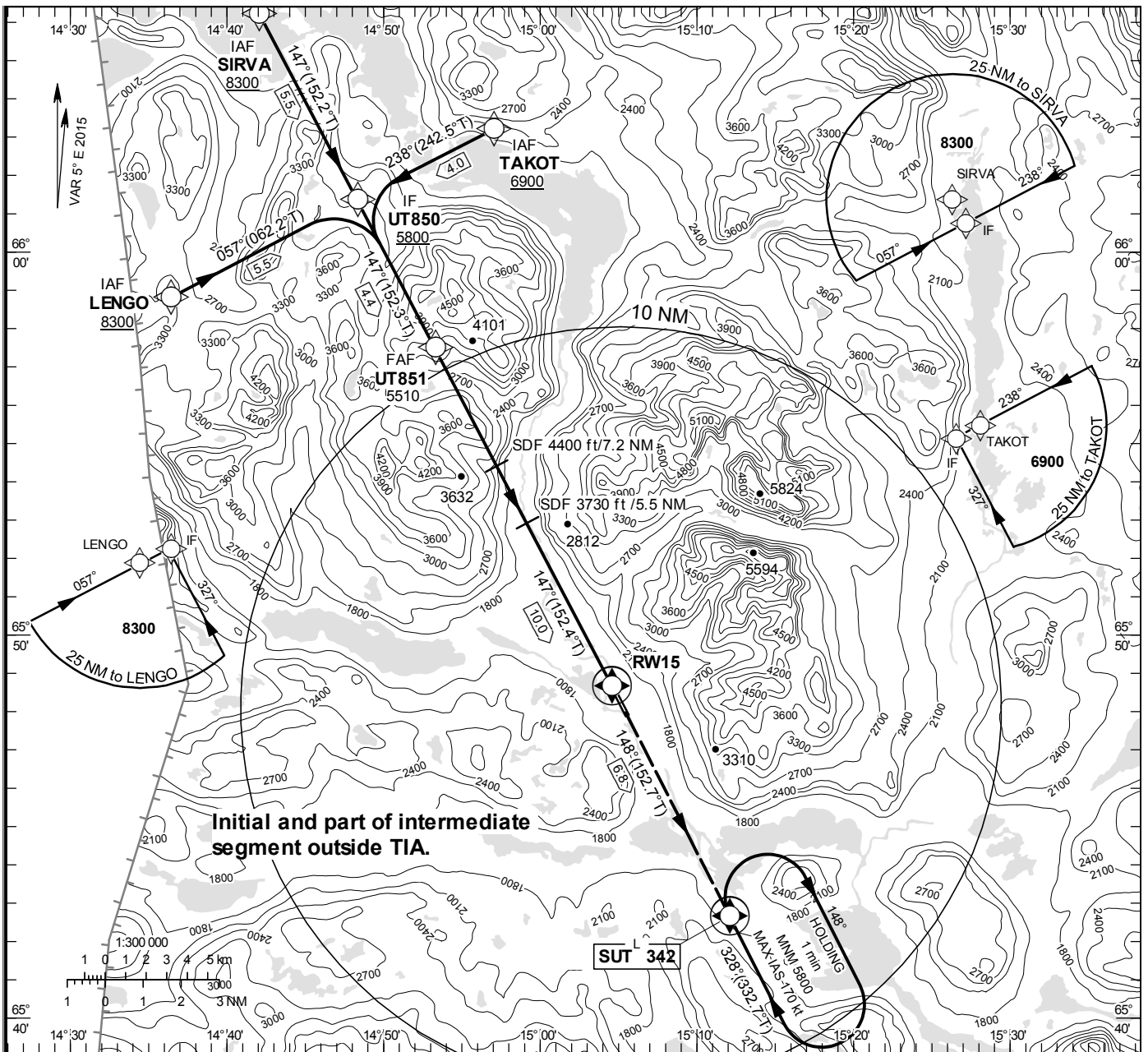


**INSTRUMENT
APPROACH
CHART – ICAO**

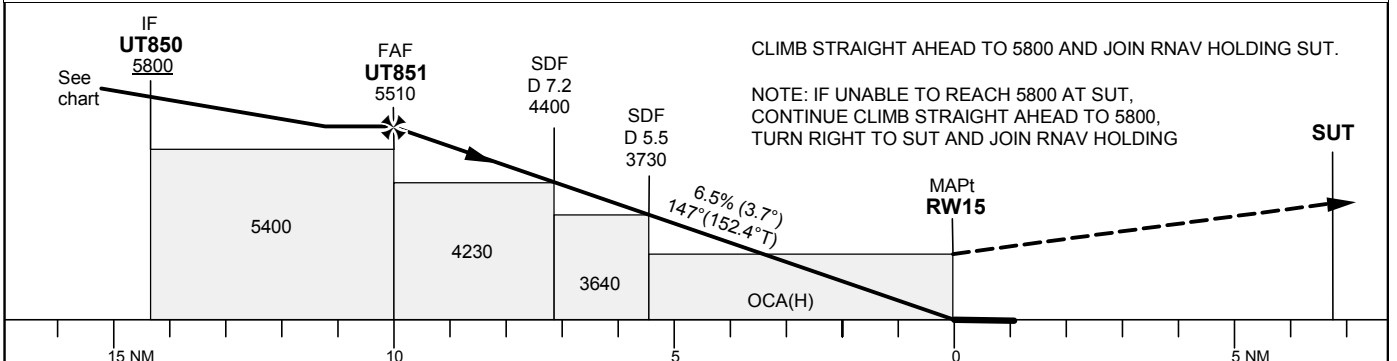
THR ELEV 1503 ft, AD ELEV 1503 ft
 OCH are related to THR.
 BRG are MAG (True).
 ALT, HGT and ELEV in ft.

HEMAVAN INFORMATION 122.980

RNP RWY 15



TA 9000 ft AMSL RDH 50 ft



Cat of ACFT	OCA (H)		Final approach Dist to RW 15	Distance FAF-MAPt 10.0 NM					
	A	B		9	8	7	6	5	4
LNAV missed APCH climb grad 2.5%	3070 (1570)		ALT	5110	4710	4320	3920	3530	3130
LNAV missed APCH climb grad 3.0%	3020 (1520)		GS	kt	80	100	120	130	140
LNAV missed APCH climb grad 4.0%	2930 (1430)		Rate of descent	ft/min	525	655	790	860	920

RNP RWY 15 via SIRVA

Path Desc	Waypoint Identifier	Fly-over	Course °M(°T)	Dist (NM)	Turn Dir	Altitude	Speed	VPA/RDH	Rec Navaid	Navigation Specification
IF	SIRVA	-	-	-	-	+8300	-	-	-	RNP APCH
TF	UT850	-	147 ⁰ (152.2 ⁰)	5.5	-	+5800	-	-	-	RNP APCH

RNP RWY 15 via TAKOT

Path Desc	Waypoint Identifier	Fly-over	Course °M(°T)	Dist (NM)	Turn Dir	Altitude	Speed	VPA/RDH	Rec Navaid	Navigation Specification
IF	TAKOT	-	-	-	-	+6900	-	-	-	RNP APCH
TF	UT850	-	238 ⁰ (242.5 ⁰)	4.0	-	+5800	-	-	-	RNP APCH

RNP RWY 15 via LENGO

Path Desc	Waypoint Identifier	Fly-over	Course °M(°T)	Dist (NM)	Turn Dir	Altitude	Speed	VPA/RDH	Rec Navaid	Navigation Specification
IF	LENGO	-	-	-	-	+8300	-	-	-	RNP APCH
TF	UT850	-	057 ⁰ (062.2 ⁰)	5.5	-	+5800	-	-	-	RNP APCH

Path Desc	Waypoint Identifier	Fly-over	Course °M(°T)	Dist (NM)	Turn Dir	Altitude	Speed	VPA/RDH	Rec Navaid	Navigation Specification
IF	UT850	-	-	-	-	+5800	-	-	-	RNP APCH
TF	UT851	-	147 ⁰ (152.3 ⁰)	4.4	-	@5510	-	-	-	RNP APCH
TF	RW15	Y	147 ⁰ (152.4 ⁰)	10.0	-	@1553	-	-	-	RNP APCH
TF	SUT	Y	148 ⁰ (152.7 ⁰)	-	-	-	-	-	-	RNP APCH
HM	SUT	Y	328 ⁰ (332.7 ⁰)	-	R	+5800	-170	-	-	RNAV 1