

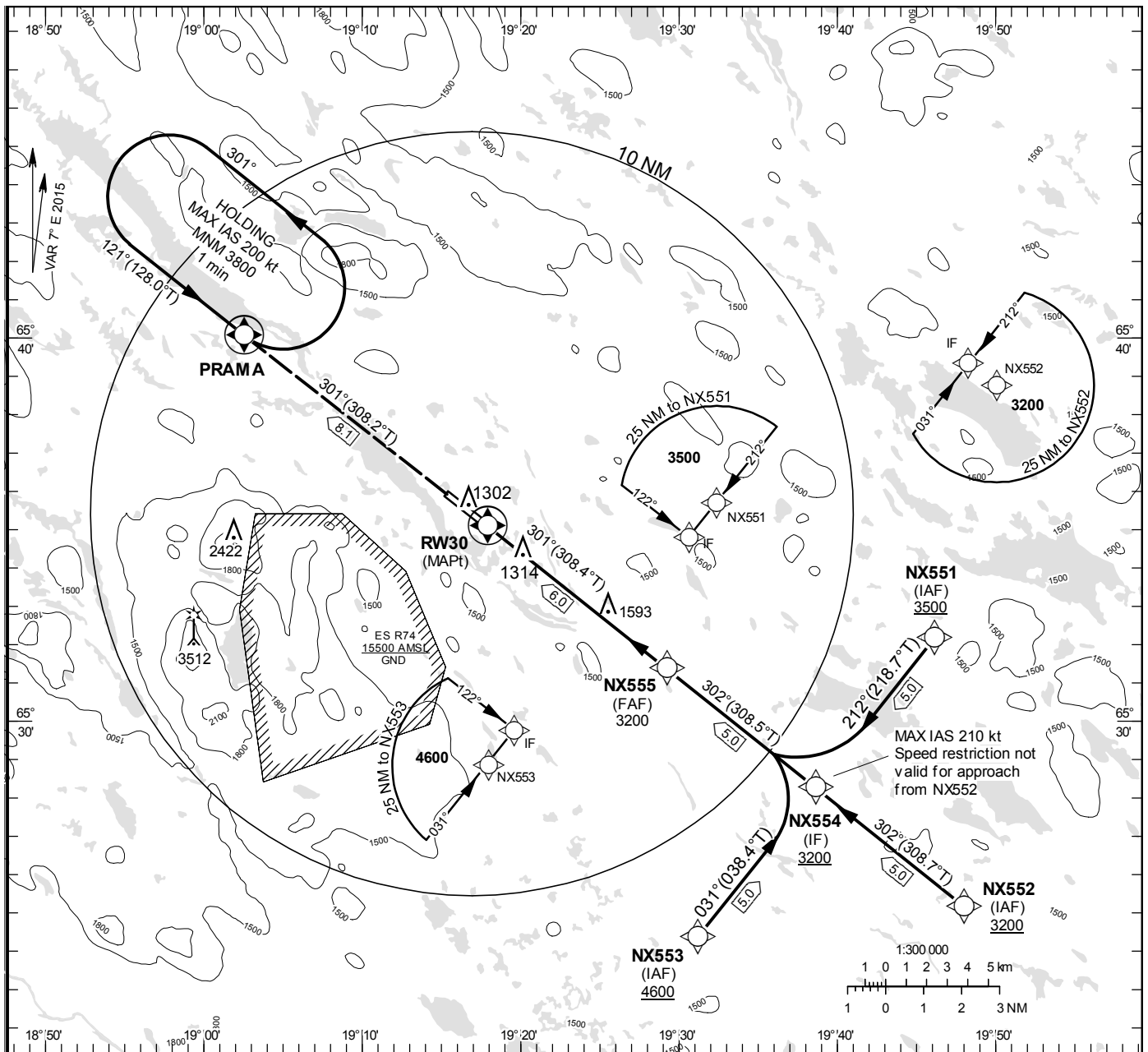
**INSTRUMENT  
APPROACH  
CHART – ICAO**

**THR ELEV 1240.1 ft, AD ELEV 1245 ft**  
 OCH are related to THR.  
 BRG are MAG (True).  
 ALT, HGT and ELEV in ft.

ARVIDSJAUR  
 TOWER/INFORMATION 122.730

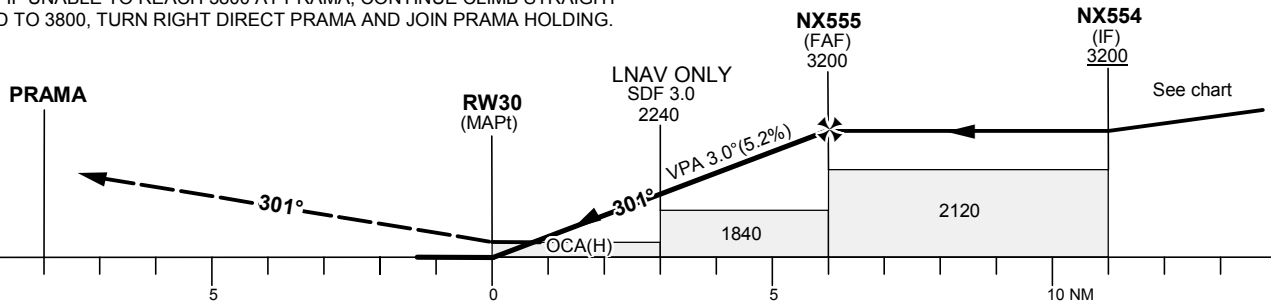
**RNP RWY 30**

EGNOS Ch 78872 E30A



TA 5000 ft AMSL RDH 50 ft

CLIMB STRAIGHT AHEAD TO PRAMA AND JOIN PRAMA HOLDING.  
 NOTE: IF UNABLE TO REACH 3800 AT PRAMA, CONTINUE CLIMB STRAIGHT  
 AHEAD TO 3800, TURN RIGHT DIRECT PRAMA AND JOIN PRAMA HOLDING.



Cat of ACFT	OCA (H)				Final approach Dist to RWY 30	Distance FAF-MAPt 6.0 NM						
	A	B	C	D		6	5	4	3	2	1	
LPV	1433(193)	1445(205)	1453(213)	1464(224)	3200	2880	2560	2250	1930	1610		
LNAV	1560(320)				GS	80	100	120	140	160	180	
					Rate of descent	ft/min	425	530	635	745	850	955

## RNP RWY 30 via NX551

Path Desc	Waypoint Identifier	Fly-over	Course °M(°T)	Dist (NM)	Turn Dir	Altitude	Speed	VPA/RDH	Rec Navaid	Navigation Specification
IF	NX551	-	-	-	-	+3500	-	-	-	RNP APCH
TF	NX554	-	212°(218.7°)	5.0	-	+3200	-210	-	-	RNP APCH

## RNP RWY 30 via NX552

Path Desc	Waypoint Identifier	Fly-over	Course °M(°T)	Dist (NM)	Turn Dir	Altitude	Speed	VPA/RDH	Rec Navaid	Navigation Specification
IF	NX552	-	-	-	-	+3200	-	-	-	RNP APCH
TF	NX554	-	302°(308.7°)	5.0	-	+3200	-	-	-	RNP APCH

## RNP RWY 30 via NX553

Path Desc	Waypoint Identifier	Fly-over	Course °M(°T)	Dist (NM)	Turn Dir	Altitude	Speed	VPA/RDH	Rec Navaid	Navigation Specification
IF	NX553	-	-	-	-	+4600	-	-	-	RNP APCH
TF	NX554	-	031°(038.4°)	5.0	-	+3200	-210	-	-	RNP APCH

Path Desc	Waypoint Identifier	Fly-over	Course °M(°T)	Dist (NM)	Turn Dir	Altitude	Speed	VPA/RDH	Rec Navaid	Navigation Specification
IF	NX554	-	-	-	-	+3200	-	-	-	RNP APCH
TF	NX555	-	302°(308.5°)	5.0	-	@3200	-	-	-	RNP APCH
TF	RW30	Y	301°(308.4°)	6.0	-	@1290	-	-3.00/50	-	RNP APCH
TF	PRAMA	Y	301°(308.2°)	8.1	-	-	-	-	-	RNP APCH
HM	PRAMA	Y	121°(128.0°)	-	L	+3800	-200	-	-	RNAV 1

## FAS Data Block

## RNP RWY 30

## Input data

Operation Type	0
SBAS Provider	1
Airport Identifier	ESNX
Runway	30
Runway Direction	0
Approach Performance Designator	0
Route Indicator	
Reference Path Data Selector	0
Reference Path Identifier	E30A
LTP/FTP Latitude	653504.8800N
LTP/FTP Longitude	0191755.5200E
LTP/FTP Ellipsoidal Height (metres)	406.0
FPAP Latitude	653554.8000N
Delta FPAP Latitude (seconds)	49.9200
FPAP Longitude	0191522.2200E
Delta FPAP Longitude (seconds)	-153.3000
Threshold Crossing Height	50.0
TCH Units Selector	0
Glidepath Angle (degrees)	3.00
Course Width (metres)	105.00
Length Offset (metres)	0
HAL (metres)	40.0
VAL (metres)	50.0

## Output data

Data Block	10 18 0E 13 05 1E 00 00 01 30 33 05 60 59 25 1C 80 39 48 08 DC 23 00 86 01 58 52 FB F4 01 2C 01 64 00 C8 FA F1 4B FC D2
Calculated CRC Value	F14BFCD2

## Required Additional Data

ICAO Code	ES
LTP/FTP Orthometric Height (metres)	378.0
FPAP Orthometric Height (metres)	378.6