

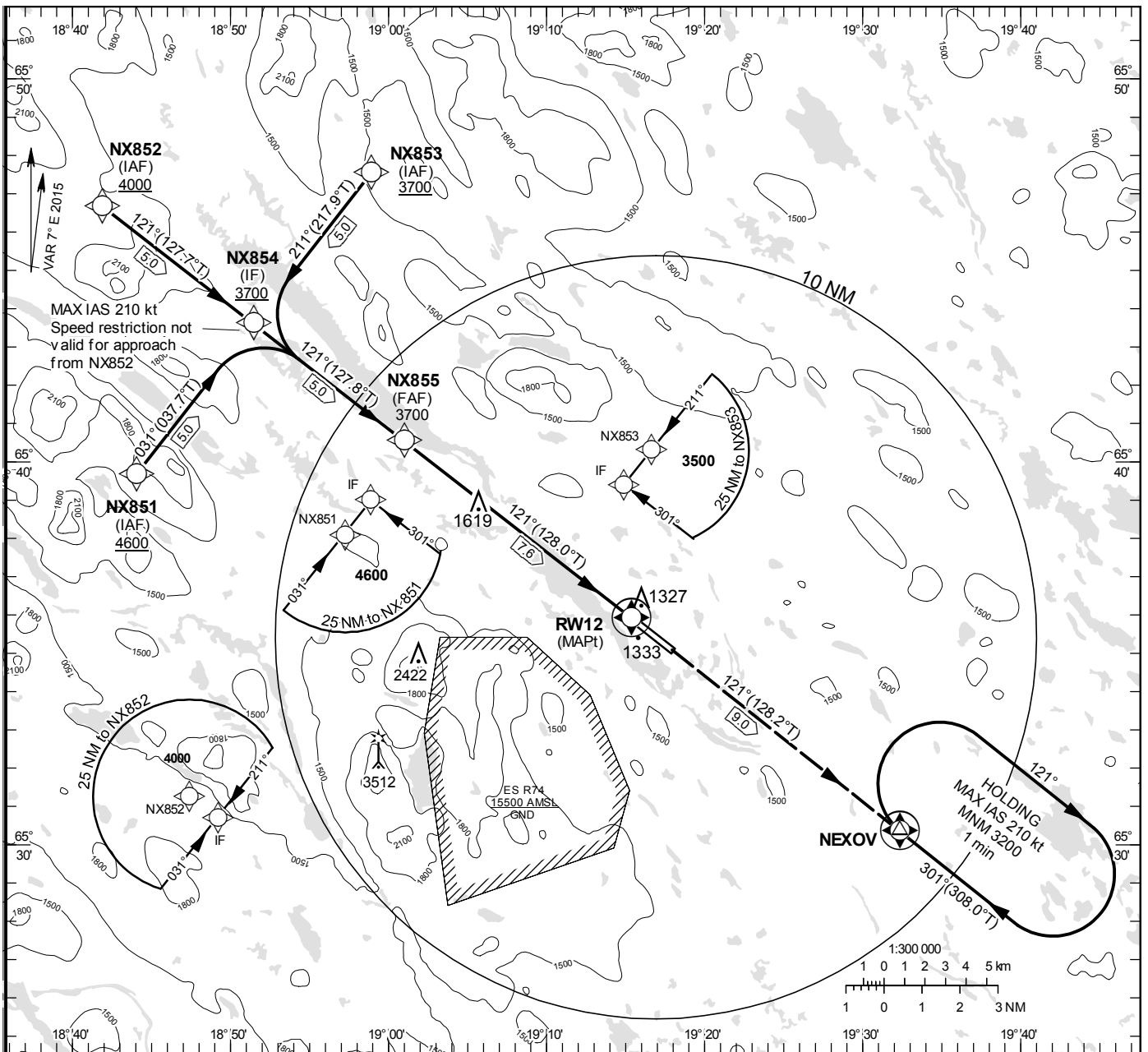
**INSTRUMENT  
APPROACH  
CHART – ICAO**

**THR ELEV 1242.0 ft, AD ELEV 1245 ft**  
 OCH are related to THR.  
 BRG are MAG (True).  
 ALT, HGT and ELEV in ft.

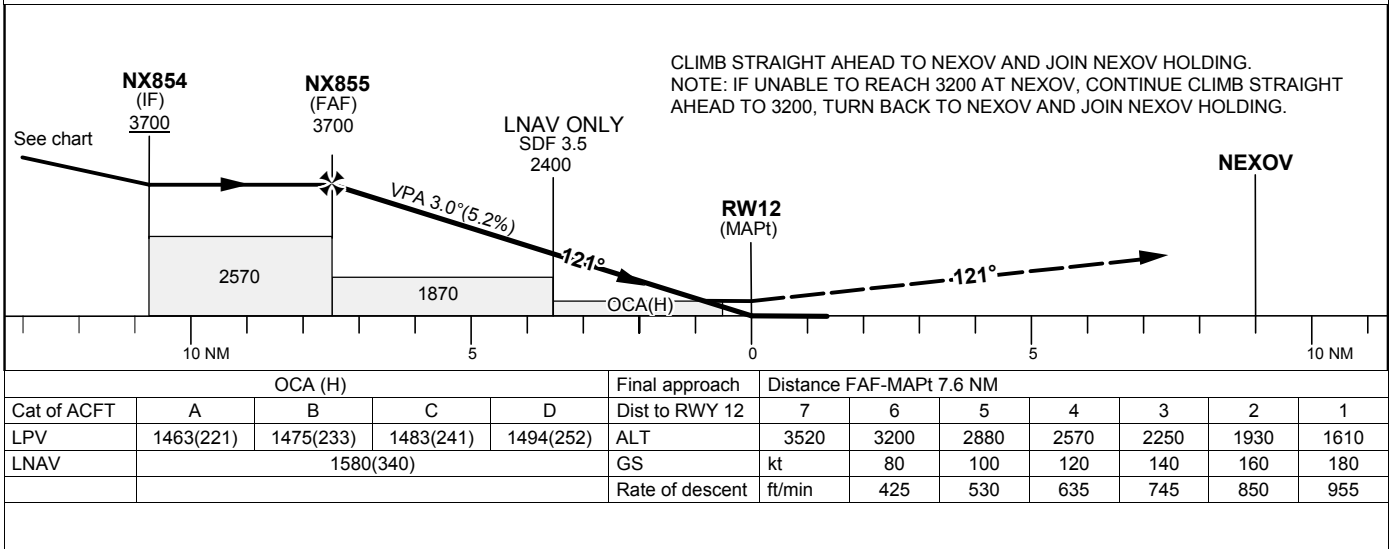
ARVIDSJAUR 122.730  
 TOWER/INFORMATION

**RNP RWY 12**

EGNOS Ch 71144 E12A



TA 5000 ft AMSL RDH 50 ft



## RNP RWY 12 via NX851

Path Desc	Waypoint Identifier	Fly-over	Course °M(°T)	Dist (NM)	Turn Dir	Altitude	Speed	VPA/RDH	Rec Navaid	Navigation Specification
IF	NX851	-	-	-	-	+4600	-	-	-	RNP APCH
TF	NX854	-	031°(037.7°)	5.0	-	+3700	-210	-	-	RNP APCH

## RNP RWY 12 via NX852

Path Desc	Waypoint Identifier	Fly-over	Course °M(°T)	Dist (NM)	Turn Dir	Altitude	Speed	VPA/RDH	Rec Navaid	Navigation Specification
IF	NX852	-	-	-	-	+4000	-	-	-	RNP APCH
TF	NX854	-	121°(127.7°)	5.0	-	+3700	-	-	-	RNP APCH

## RNP RWY 12 via NX853

Path Desc	Waypoint Identifier	Fly-over	Course °M(°T)	Dist (NM)	Turn Dir	Altitude	Speed	VPA/RDH	Rec Navaid	Navigation Specification
IF	NX853	-	-	-	-	+3700	-	-	-	RNP APCH
TF	NX854	-	211°(217.9°)	5.0	-	+3700	-210	-	-	RNP APCH

Path Desc	Waypoint Identifier	Fly-over	Course °M(°T)	Dist (NM)	Turn Dir	Altitude	Speed	VPA/RDH	Rec Navaid	Navigation Specification
IF	NX854	-	-	-	-	+3700	-	-	-	RNP APCH
TF	NX855	-	121°(127.8)	5.0	-	@3700	-	-	-	RNP APCH
TF	RW12	Y	121°(128.0)	7.6	-	@1292	-	-3.00/50	-	RNP APCH
TF	NEXOV	Y	121°(128.2)	9.0	-	-	-	-	-	RNP APCH
HM	NEXOV	Y	301°(308.0°)	-	R	+3200	-210	-	-	RNAV 1

## FAS Data Block

## RNP RWY 12

## Input data

Operation Type	0
SBAS Provider	1
Airport Identifier	ESNX
Runway	12
Runway Direction	0
Approach Performance Designator	0
Route Indicator	
Reference Path Data Selector	0
Reference Path Identifier	E12A
LTP/FTP Latitude	653554.8000N
LTP/FTP Longitude	0191522.2200E
LTP/FTP Ellipsoidal Height (metres)	406.6
FPAP Latitude	653459.2045N
Delta FPAP Latitude (seconds)	-55.5955
FPAP Longitude	0191812.9305E
Delta FPAP Longitude (seconds)	170.7105
Threshold Crossing Height	50.0
TCH Units Selector	0
Glidepath Angle (degrees)	3.00
Course Width (metres)	105.00
Length Offset (metres)	288
HAL (metres)	40.0
VAL (metres)	50.0

## Output data

Data Block	10 18 0E 13 05 0C 00 00 01 32 31 05 60 DF 26 1C D8 8B 43 08 E2 23 A9 4D FE AD 35 05 F4 01 2C 01 64 24 C8 FA B3 51 AE 2F
Calculated CRC Value	B351AE2F

## Required Additional Data

ICAO Code	ES
LTP/FTP Orthometric Height (metres)	378.6
FPAP Orthometric Height (metres)	378.0