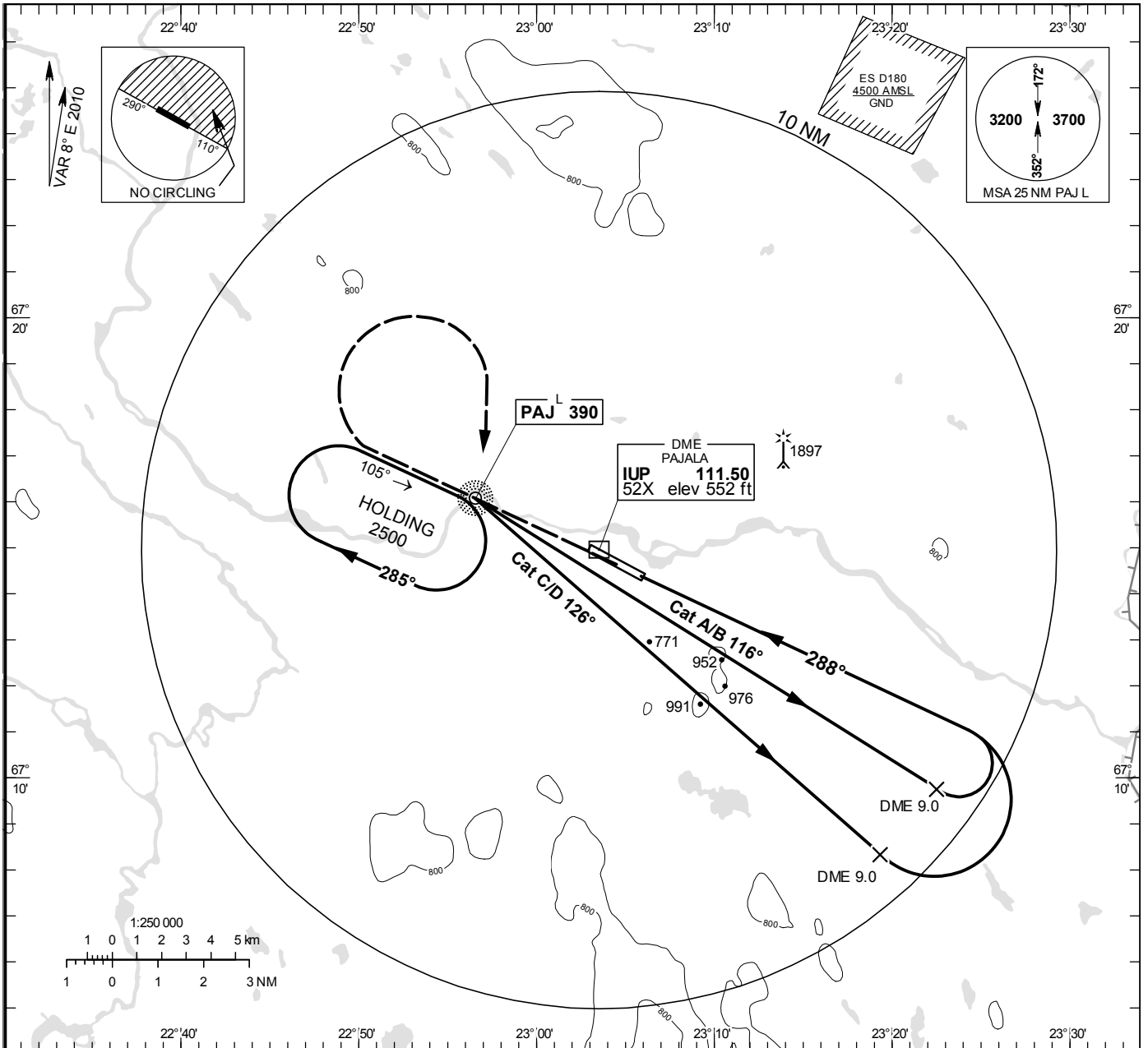


INSTRUMENT APPROACH CHART - ICAO

THR ELEV 541 ft, AD ELEV 542 ft
 OCH are related to THR.
 Circling OCH are related to AD ELEV.
 BRG are MAG
 ALT. HGT and ELEV in ft.

PAJALA INFORMATION 118.380

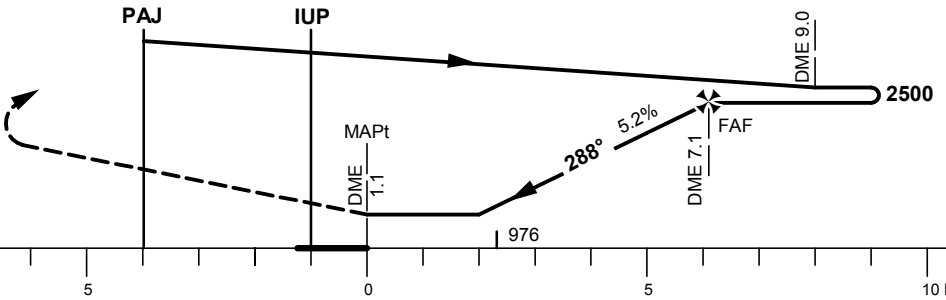
NDB + DME RWY 29 PAJALA



TA 5000 ft AMSL Max speed in Baseturn 220 kt IAS * Timing not authorized for defining the MAPt

Final APCH line offset 2° FM QFU 290°

CLIMB STRAIGHT AHEAD.
 AT 2500 OR PAJ,
 WHICHEVER LATEST,
 TURN RIGHT TO RETURN TO PAJ.



Cat of ACFT	OCA (H)				Final approach				Distance FAF-MAPt 6.0 NM*				
	A	B	C	D	DME NM	7	6	5	4	7	6	5	4
Straight-in Approach	1230(690)				ALT	2460	2140	1830	1510				
Circling SW RWY	1230(690)	1250(710)	1390(850)	1390(850)	GS	kt 80	100	120	140	160	180		
					Time	min:s 4:30	3:36	3:00	2:35	2:15	2:00		
					Rate of descent	ft/min 425	530	635	740	845	950		