

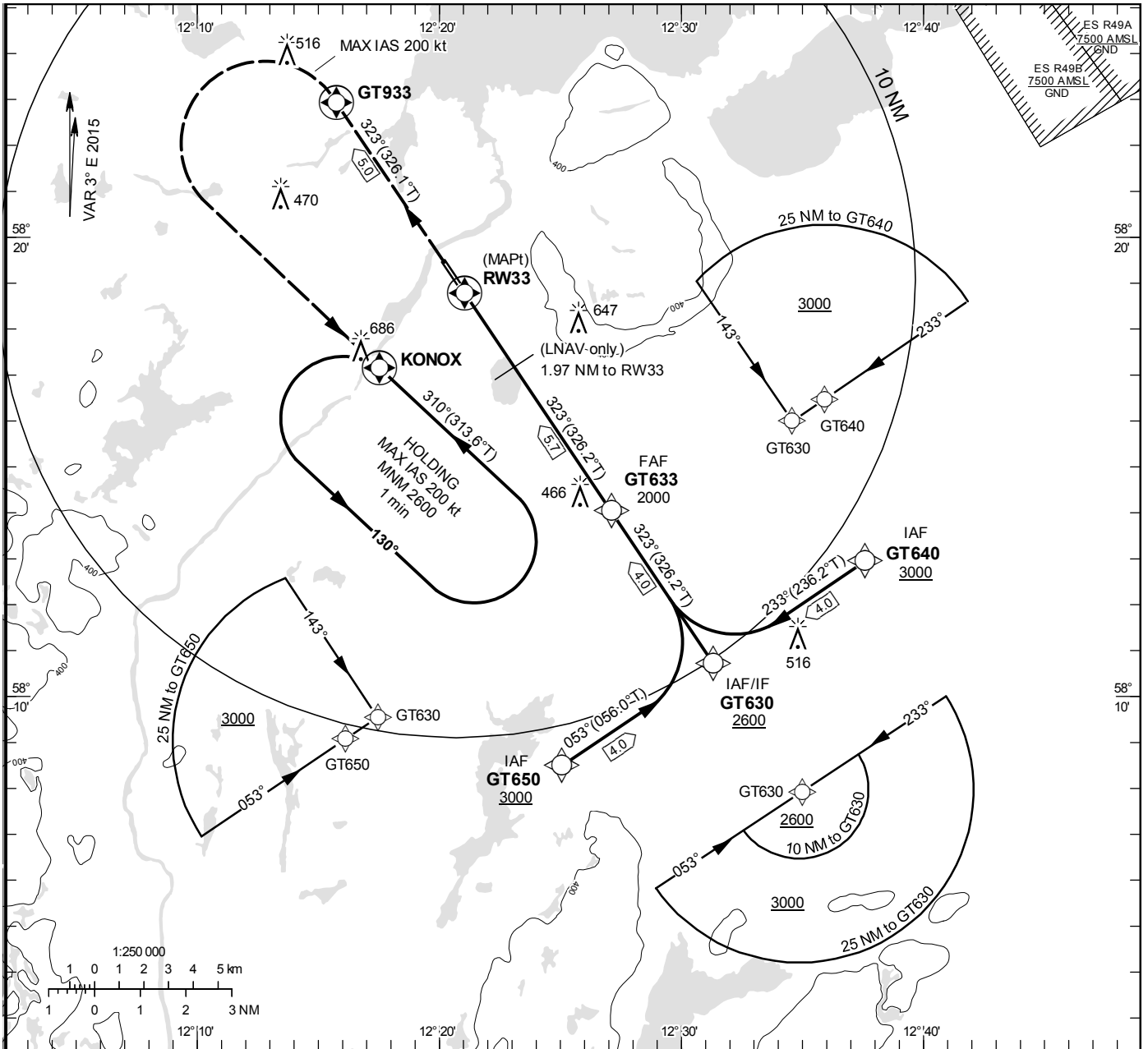
**INSTRUMENT APPROACH CHART – ICAO**

THR ELEV 134.8 ft, AD ELEV 137 ft  
 OCH are related to THR.  
 BRG are MAG (True).  
 ALT, HGT and ELEV in ft.  
**BARO-VNAV NOT BELOW -20° C**

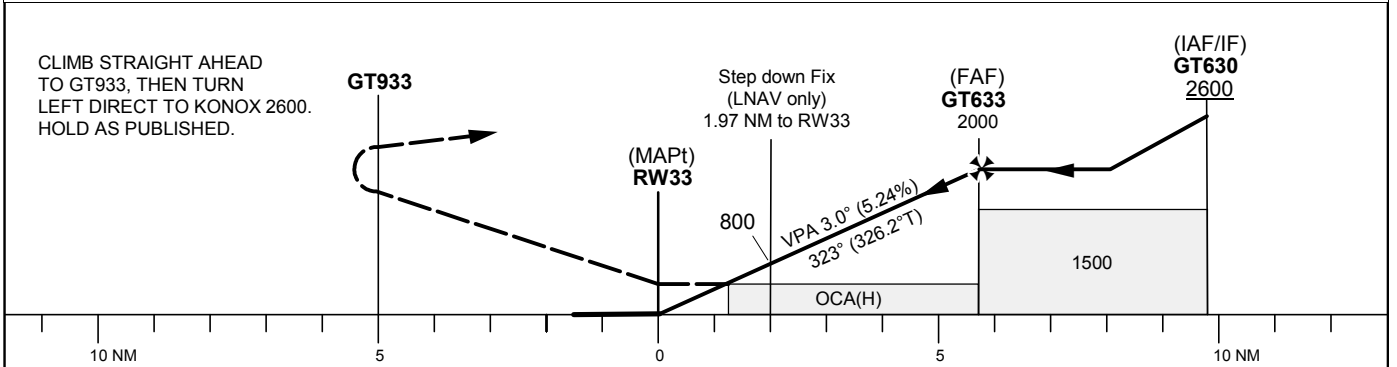
TROLLHÄTTAN TOWER 122.730

RNP RWY 33

EGNOS Ch 57705 E 33A



TA 5000 ft AMSL RDH 40 ft Max speed within procedure 200 kt IAS



Cat of ACFT	OCA (H)			Final approach Distance FAF-MAPT 5.7 NM						
	A	B	C	Dist to RWY33	5.7	5	4	3	2	1
LPV		385 (250)		ALT	2000	1770	1450	1130	810	490
LNAV/VNAV	385 (250)	389 (254)	398 (263)	GS	kt	90	110	130	150	160
LNAV		500 (370)		Rate of descent	ft/min	478	584	690	796	849
Circling	840 (710)	950 (820)	1100 (970)							

**Instrument Approach Procedure Coding Tables (RNP RWY33)**

Note: Step down fix at 800ft, 1.97 NM to RW33 not to be coded as waypoint

**Via GT630**

Path Desc	Waypoint Identifier	Fly-over	Course °M(°T)	Dist/ Time	Turn Dir	Altitude (ft)	Speed	VPA/ RDH	Rec Navaid	Navigation Specification
IF	GT630	N	-	-	-	+2600	200	-	-	RNP APCH
TF	GT633	N	323° (326.2°)	4.0 NM	-	2000	-	-	-	RNP APCH
TF	RW33	Y	323° (326.2°)	5.7 NM	-	175	-	-3.0/40	-	RNP APCH
TF	GT933	Y	323° (326.1°)	5.0 NM	-	-	200	-	-	RNP APCH
DF	KONOX	Y	-	-	L	+2600	200	-	-	RNP APCH
HM	KONOX	Y	310° (313.6°)	1 min	L	+2600	200	-	-	RNAV 1

**Via GT640**

Path Desc	Waypoint Identifier	Fly-over	Course °M(°T)	Dist/ Time	Turn Dir	Altitude (ft)	Speed	VPA/ RDH	Rec Navaid	Navigation Specification
IF	GT640	N	-	-	-	+3000	200	-	-	RNP APCH
TF	GT630	N	233° (236.2°)	4.0 NM	R	+2600	200	-	-	RNP APCH
TF	GT633	N	323° (326.2°)	4.0 NM	-	2000	-	-	-	RNP APCH
TF	RW33	Y	323° (326.2°)	5.7 NM	-	175	-	-3.0/40	-	RNP APCH
TF	GT933	Y	323° (326.1°)	5.0 NM	-	-	200	-	-	RNP APCH
DF	KONOX	Y	-	-	L	+2600	200	-	-	RNP APCH
HM	KONOX	Y	310° (313.6°)	1 min	L	+2600	200	-	-	RNAV 1

**Via GT650**

Path Desc	Waypoint Identifier	Fly-over	Course °M(°T)	Dist/ Time	Turn Dir	Altitude (ft)	Speed	VPA/ RDH	Rec Navaid	Navigation Specification
IF	GT650	N	-	-	-	+3000	200	-	-	RNP APCH
TF	GT630	N	053° (056.0°)	4.0 NM	L	+2600	200	-	-	RNP APCH
TF	GT633	N	323° (326.2°)	4.0 NM	-	2000	-	-	-	RNP APCH
TF	RW33	Y	323° (326.2°)	5.7 NM	-	175	-	-3.0/40	-	RNP APCH
TF	GT933	Y	323° (326.1°)	5.0 NM	-	-	200	-	-	RNP APCH
DF	KONOX	Y	-	-	L	+2600	200	-	-	RNP APCH
HM	KONOX	Y	310° (313.6°)	1 min	L	+2600	200	-	-	RNAV 1

## FAS Data Block

## Input data

Operation Type	0
SBAS Provider	1
Airport Identifier	ESGT
Runway	33
Runway Direction	0
Approach Performance Designator	0
Route Indicator	
Reference Path Data Selector	0
Reference Path Identifier	E33A
LTP/FTP Latitude	581847.0030N
LTP/FTP Longitude	0122103.2365E
LTP/FTP Ellipsoidal Height (metres)	75.6
FPAP Latitude	581927.2570N
Delta FPAP Latitude (seconds)	40.2540
FPAP Longitude	0122011.7795E
Delta FPAP Longitude (seconds)	-51.4570
Threshold Crossing Height	40.0
TCH Units Selector	0
Glidepath Angle (degrees)	3.00
Course Width (metres)	105.00
Length Offset (metres)	0
HAL (metres)	40.0
VAL (metres)	50.0

## Output data

Data Block	10 14 07 13 05 21 00 00 01 33 33 05 B6 76 06 19 09 E9 4C 05 F4 16 7C 3A 01 FE 6D FE 90 01 2C 01 64 00 C8 FA 82 33 53 7A
Calculated CRC Value	8233537A

## Required Additional Data

ICAO Code	ES
LTP/FTP Orthometric Height (metres)	41.1
FPAP Orthometric Height (metres)	