

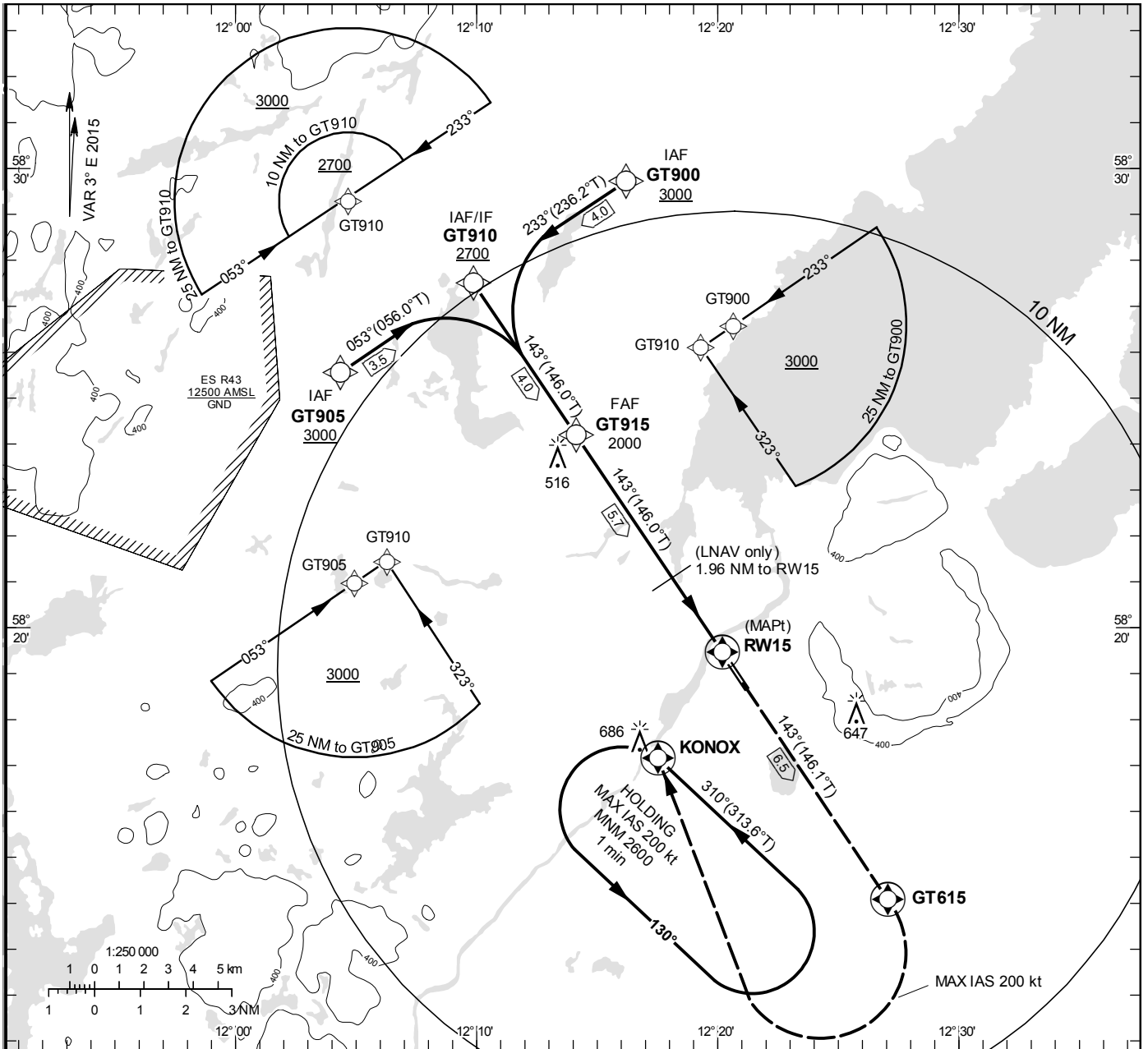
INSTRUMENT APPROACH CHART – ICAO

THR ELEV 136 ft, AD ELEV 137 ft
 OCH are related to THR.
 BRG are MAG (True).
 ALT, HGT and ELEV in ft.
BARO-VNAV NOT BELOW -20° C

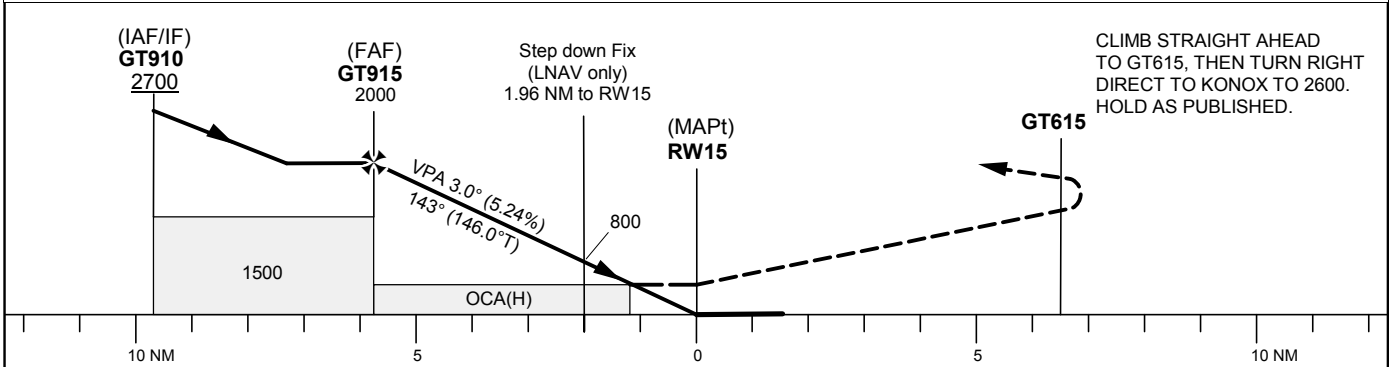
TROLLHÄTTAN TOWER 122.730

RNP RWY 15

EGNOS Ch 54114 E 15A



TA 5000 ft AMSL RDH 42 ft Max speed within procedure 200 kt IAS



CLIMB STRAIGHT AHEAD TO GT615, THEN TURN RIGHT DIRECT TO KONOX TO 2600. HOLD AS PUBLISHED.

Cat of ACFT	OCA (H)			Final approach Distance FAF-MAPt 5.7 NM						
	A	B	C	Dist to RWY15	5.7	5	4	3	2	1
LPV	411 (275)	420 (284)	430 (294)	ALT	2000	1770	1450	1130	810	490
LNAV/VNAV	439 (303)	448 (312)	458 (322)	GS	kt	90	110	130	150	160
LNAV		560 (420)		Rate of descent	ft/min	478	584	690	796	849
Circling	840 (710)	950 (820)	1100 (970)							

Instrument Approach Procedure Coding Tables (RNP RWY15)

Note: Step down fix at 800ft, 1.96 NM to RW15 not to be coded as waypoint

Via GT910

Path Desc	Waypoint Identifier	Fly-over	Course °M(°T)	Dist/ Time	Turn Dir	Altitude (ft)	Speed	VPA/ RDH	Rec Navaid	Navigation Specification
IF	GT910	-	-	-	-	+2700	200	-	-	RNP APCH
TF	GT915	-	143° (146.0°)	4.0 NM	-	2000	-	-	-	RNP APCH
TF	RW15	Y	143° (146.0°)	5.7 NM	-	178	-	-3.0/42	-	RNP APCH
TF	GT615	Y	143° (146.1°)	6.5 NM	-	-	200	-	-	RNP APCH
DF	KONOX	Y	-	-	R	+2600	200	-	-	RNP APCH
HM	KONOX	Y	310° (313.6°)	1 min	L	+2600	200	-	-	RNAV 1

Via GT905

Path Desc	Waypoint Identifier	Fly-over	Course °M(°T)	Dist/ Time	Turn Dir	Altitude (ft)	Speed	VPA/ RDH	Rec Navaid	Navigation Specification
IF	GT905	-	-	-	-	+3000	200	-	-	RNP APCH
TF	GT910	-	053° (056.0°)	3.5 NM	R	+2700	200	-	-	RNP APCH
TF	GT915	-	143° (146.0°)	4.0 NM	-	2000	-	-	-	RNP APCH
TF	RW15	Y	143° (146.0°)	5.7 NM	-	178	-	-3.0/42	-	RNP APCH
TF	GT615	Y	143° (146.1°)	6.5 NM	-	-	200	-	-	RNP APCH
DF	KONOX	Y	-	-	R	+2600	200	-	-	RNP APCH
HM	KONOX	Y	310° (313.6°)	1 min	L	+2600	200	-	-	RNAV 1

Via GT900

Path Desc	Waypoint Identifier	Fly-over	Course °M(°T)	Dist/ Time	Turn Dir	Altitude (ft)	Speed	VPA/ RDH	Rec Navaid	Navigation Specification
IF	GT900	-	-	-	-	+3000	200	-	-	RNP APCH
TF	GT910	-	233° (236.2°)	4.0 NM	L	+2700	200	-	-	RNP APCH
TF	GT915	-	143° (146.0°)	4.0 NM	-	2000	-	-	-	RNP APCH
TF	RW15	Y	143° (146.0°)	5.7 NM	-	178	-	-3.0/42	-	RNP APCH
TF	GT615	Y	143° (146.1°)	6.5 NM	-	-	200	-	-	RNP APCH
DF	KONOX	Y	-	-	R	+2600	200	-	-	RNP APCH
HM	KONOX	Y	310° (313.6°)	1 min	L	+2600	200	-	-	RNAV 1

FAS Data Block

RNP RWY 15

Input data

Operation Type	0
SBAS Provider	1
Airport Identifier	ESGT
Runway	15
Runway Direction	0
Approach Performance Designator	0
Route Indicator	
Reference Path Data Selector	0
Reference Path Identifier	E15A
LTP/FTP Latitude	581927.2570N
LTP/FTP Longitude	0122011.7795E
LTP/FTP Ellipsoidal Height (metres)	76.0
FPAP Latitude	581841.4100N
Delta FPAP Latitude (seconds)	-45.8470
FPAP Longitude	0122110.3800E
Delta FPAP Longitude (seconds)	58.6005
Threshold Crossing Height	42.0
TCH Units Selector	0
Glidepath Angle (degrees)	3.00
Course Width (metres)	105.00
Length Offset (metres)	0
HAL (metres)	40.0
VAL (metres)	50.0

Output data

Data Block	10 14 07 13 05 0F 00 00 01 35 31 05 32 B1 07 19 07 57 4B 05 F8 16 D2 99 FE D1 C9 01 A4 01 2C 01 64 00 C8 FA 92 BA B4 A5
Calculated CRC Value	92BAB4A5

Required Additional Data

ICAO Code	ES
LTP/FTP Orthometric Height (metres)	41.4
FPAP Orthometric Height (metres)	