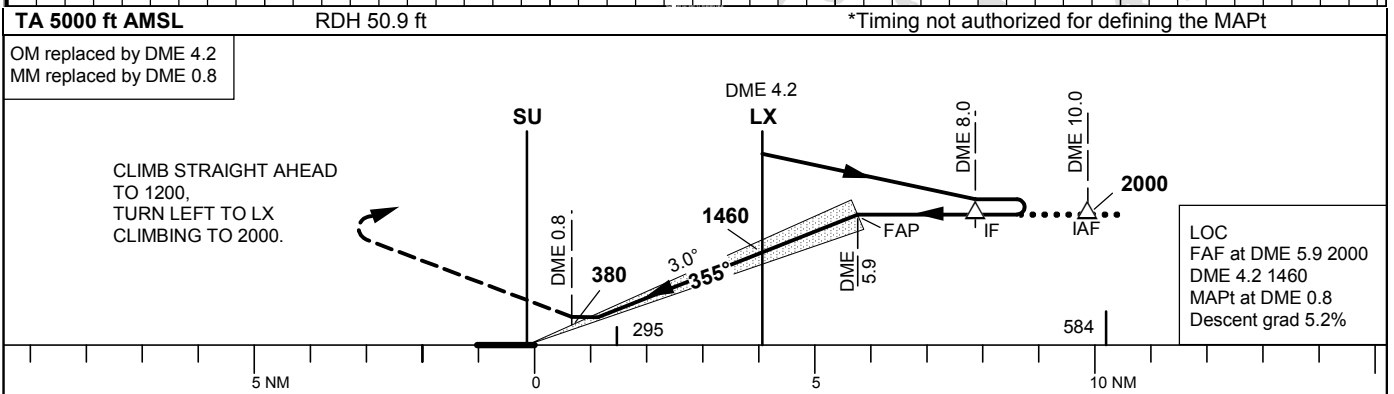
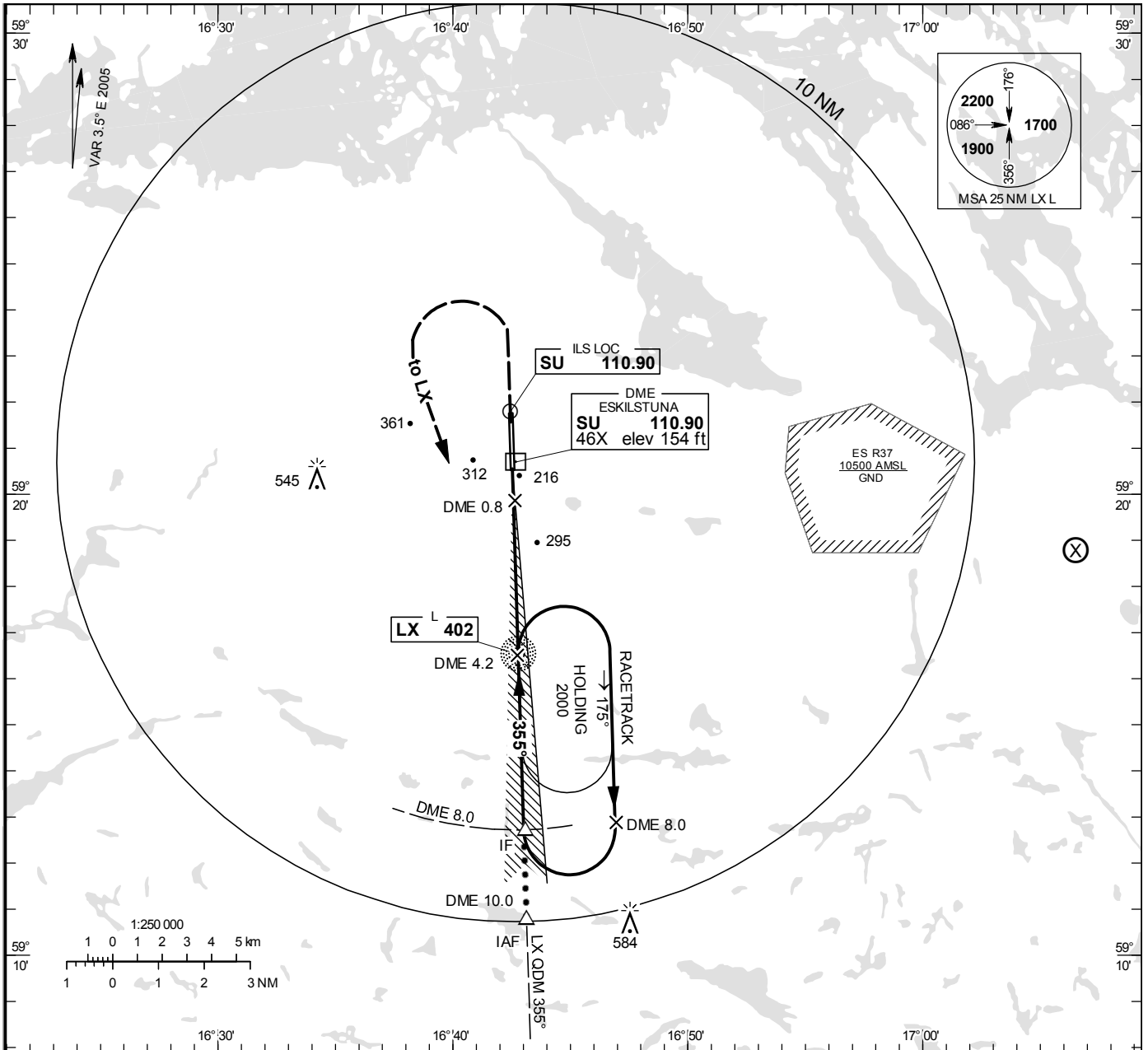


INSTRUMENT APPROACH CHART – ICAO

THR ELEV 130.4 ft, AD ELEV 140 ft
 OCH are related to THR.
 Circling OCH are related to AD ELEV.
 BRG are MAG
 ALT. HGT and ELEV in ft.

ESKILSTUNA INFORMATION 126.855

NDB+DME+ILS RWY 36
 ESKILSTUNA



OCA (H)				Final approach	LOC Distance FAF-MAPt 5.1 NM*							
Cat of ACFT		A	B	C	DME SU	4		3		2		
Straight-in Approach	CAT I	298(168)	310(180)	322(192)	ALT	1410		1090		770		
	LOC		550(420)		GS	kt	80	100	120	140	160	180
Circling		610(480)	660(530)	1030(900)	Rate of descent	ft/min	425	530	635	745	850	955