

**VISUAL APPROACH CHART - ICAO**

1:250000



**AD ELEV 77 FEET**

ELEV and ALT in ft  
HGT in ft above AD ELEV

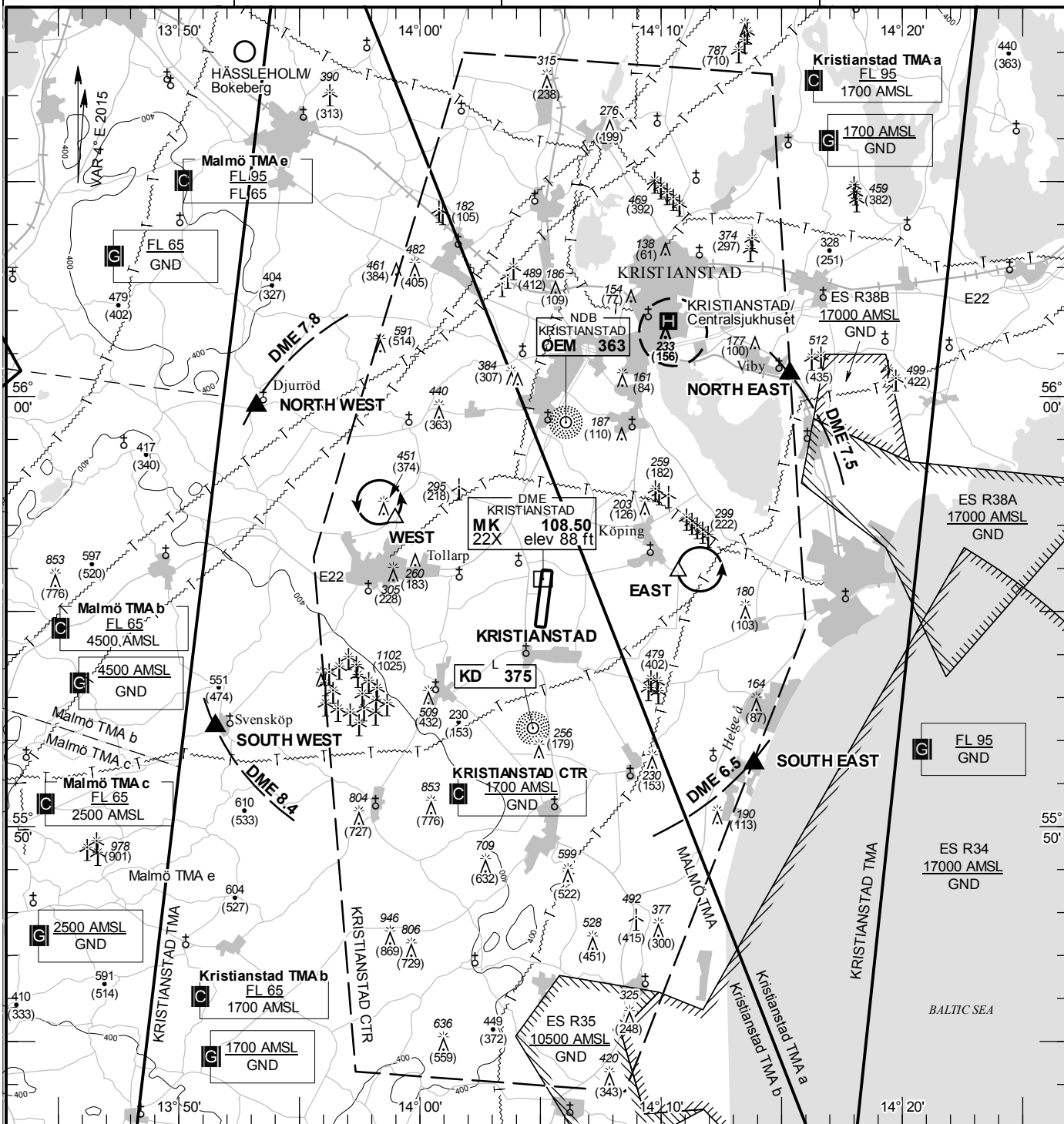
**TA 5000 AMSL**

**KRISTIANSTAD TOWER**

**129.350**

**AD 2 ESMK 6-1**

**KRISTIANSTAD SWEDEN**



**Communication failure**

- SQUAWK 7600
- Enter CTR via NORTH WEST/  
SOUTH WEST – Holding WEST  
or via NORTH EAST/SOUTH EAST –  
Holding EAST at or below 1500 ft AMSL to  
traffic circuit.  
Transmit blind your intentions.
- Flash LDG-lights and watch TWR for optical  
signals.

**Remark**

Departure RWY 19 right turn.

RWY	THR	PAPI
NR	ELEV	(MEHT)
01	77 ft	Left/3.00° (50 ft)
19	73.8 ft	Left/3.25° (59 ft)

**Legend**  
See GEN 2.3

**Entry / exit point**

NORTH EAST: East of Viby 560031N 0141520E  
SOUTH EAST: Mouth of  
river Helge å 555127N 0141351E  
SOUTH WEST: Svensköp 555219N 0135131E  
NORTH WEST: Djurröd 555946N 0135313E

**Holding**

EAST: Hold east of Köpings, east of point  
555555N 0141043E  
WEST: Hold north of Tollarp, north west of  
point 555709N 0135858E

LFV

CHANGE: Spot height above AD ELEV

AIRAC AMDT 4/2017 **22 JUN 2017**