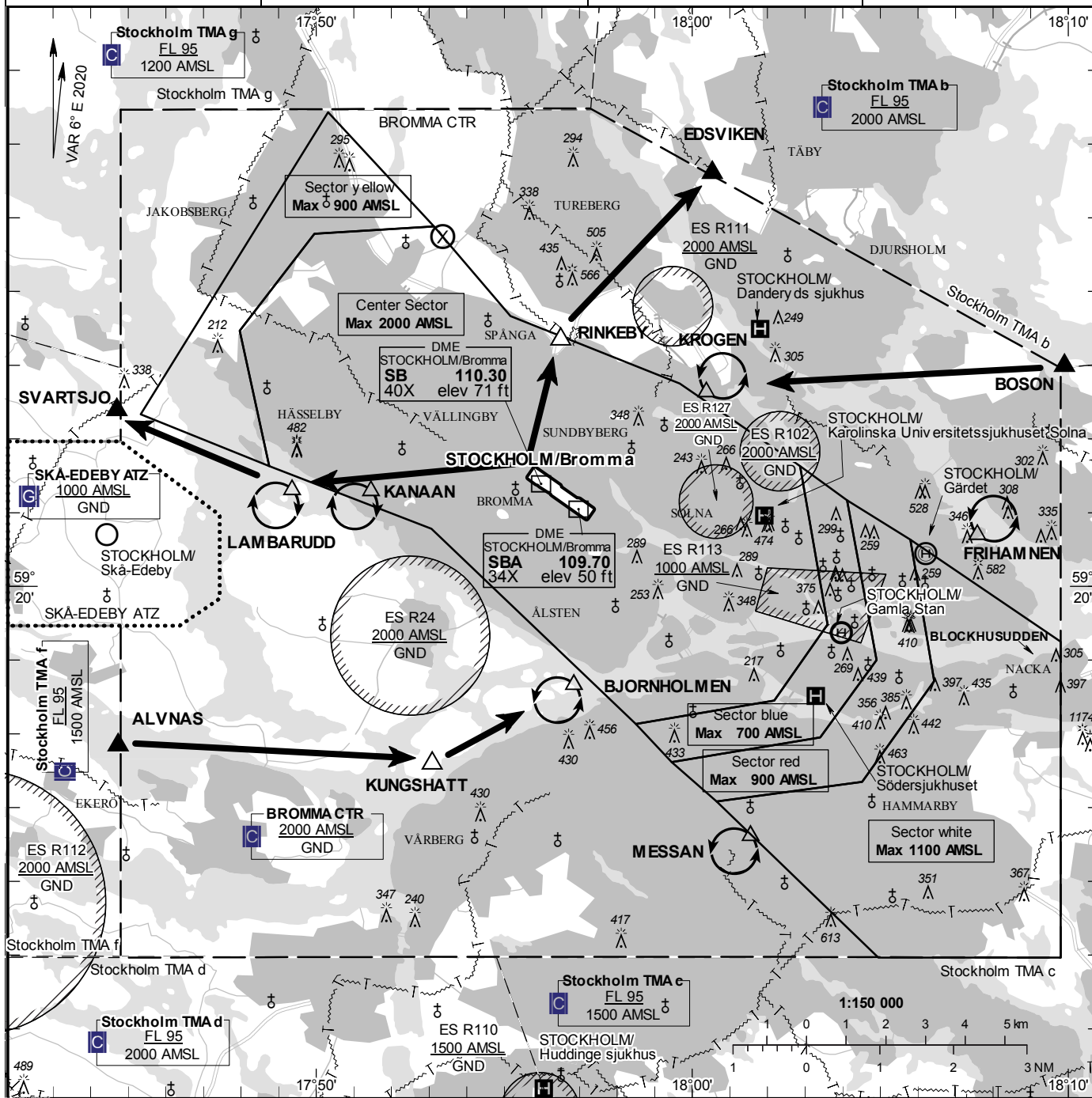


AD 2 ESSB 6-4
RWY 30
STOCKHOLM/Bromma
SWEDEN

BROMMA TOWER 118.105
BROMMA GROUND 121.605
BROMMA ATIS 122.455

AD ELEV 47 FEET
 ELEV and ALT in ft
 HGT in ft above AD ELEV

AIP SWEDEN
VFR-FLIGHT WITHIN
BROMMA CTR
 (ref AD 2 ESSB 2.22)



Communication failure

Aircraft outside CTR having received no clearance should land at an aerodrome outside CTR and obtain clearance by telephone for further flight to STOCKHOLM/Bromma. If no suitable aerodrome is within reach;

1. SQUAWK 7600
2. Depending on probable active RWY; For RWY 30 enter CTR via ALVNAS – Holding BJORNHOLMEN at or below 1500 ft AMSL to join traffic circuit on downwind leg. For RWY 12 enter CTR via SVARTSJO – Holding KANAAN at or below 1500 ft AMSL to join right traffic circuit on downwind leg. Transmit blind your intentions. Flash LDG-lights and watch TWR for optical signals.
3. Flash LDG-lights and watch TWR for optical signals.

Remark

Obstacles below 197 ft AGL not shown in CTR


Entry / exit point

EDSVIKEN	592536N 0180032E
BOSON	592259N 0180954E
ALVNAS	591750N 0174444E
SVARTSJO	592223N 0174442E

Reporting point

RINKEBY	592320N 0175630E
KUNGSHATT	591735N 0175305E

Legend

See GEN 2.3
 Special procedures for balloon flight, see AD 2 ESSB 2.22.6.4

Holding

KROGEN:	Hold over intersection between roads E18 and E4, north east of point 592237N 0180023E
FRIHAMNEN:	Hold over the harbour Frihamnen, north east of point 592041N 0180735E
MESSAN:	Hold over the exhibition hall, south west of point 591636N 0180133E
BJORNHOLMEN:	Hold over Björnholmen, south west of point 591839N 0175651E
KANAAN:	Hold over the swimming area Kanaanbadet, south west of point 592117N 0175127E
LAMBARUDD:	Hold over Lambarudd, south west of point 592118N 0174921E