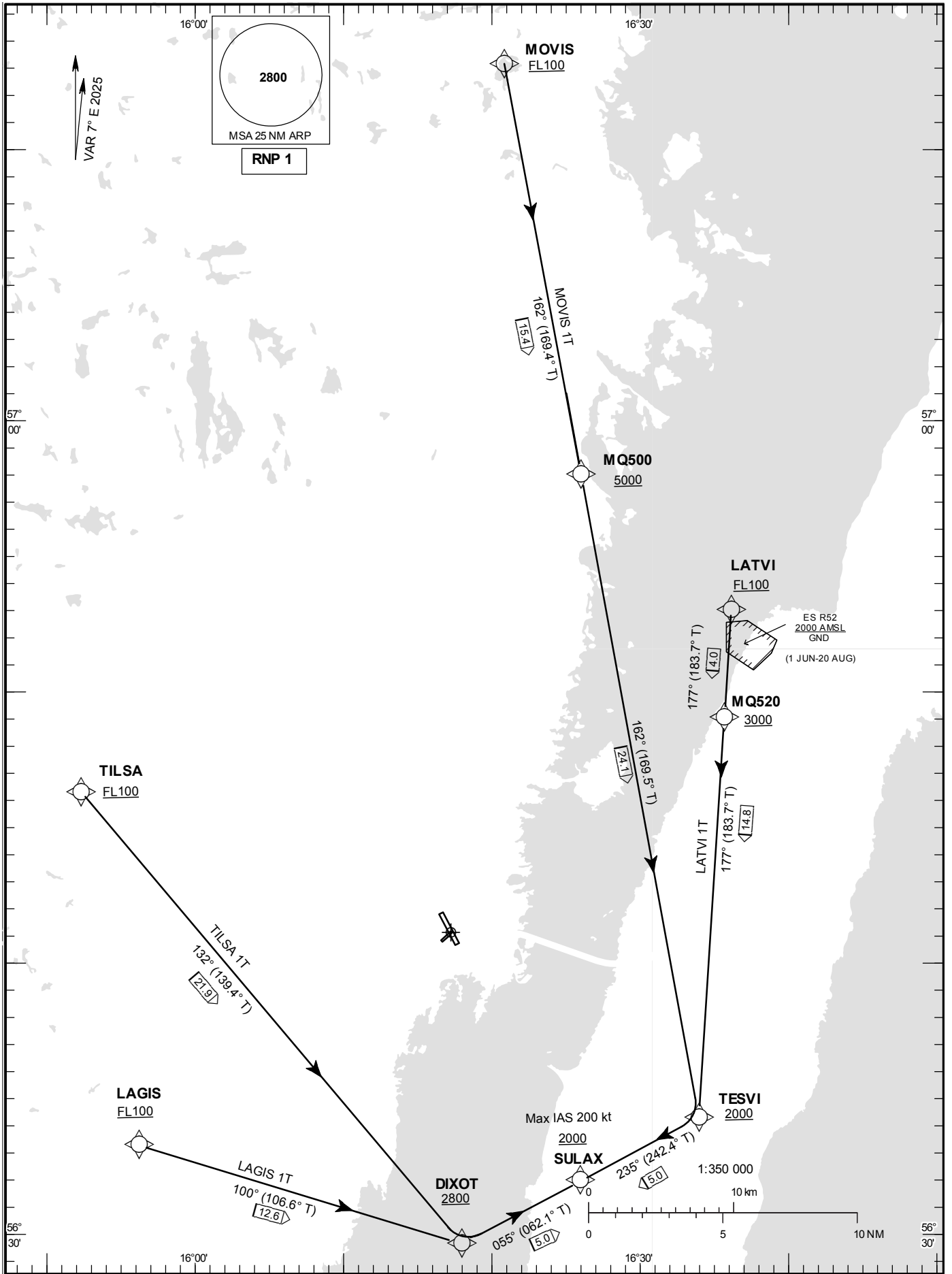


STANDARD INSTRUMENT  
ARRIVAL CHART (STAR) -  
ICAO

HGT and ALT in ft  
BRG are MAG  
TA 5000 ft AMSL

KALMAR TOWER 130.805

RNP RWY 34  
LAGIS 1T, LATVI 1T, MOVIS 1T,  
TILSA 1T.



**RNP STAR RWY 34 Coding tables and Notes**

1. Operators unable to fly RNP 1 shall inform ATC "UNABLE RNP STAR". Radar vectors or conventional STAR will then be provided.
2. +FL100 altitude restriction at LAGIS, LATVI, MOVIS and TILSA are provided to stay within controlled airspace.
3. STAR LAGIS 1T: If LAGIS is passed at FL100, descent gradient on STAR (to SULAX) is 4.3° (7.5%).
4. STAR LATVI 1T: If LATVI is passed at FL100, descent gradient on STAR (to SULAX) is 3.2° (5.6%).

**LAGIS 1T**

Path Desc	Waypoint Identifier	Fly-over	Course °M(°T)	Dist (NM)	Turn Dir	Altitude	Speed	VPA/RDH	Rec Navaid	Navigation Specification
IF	LAGIS	-	-	-	-	+FL100	-	-	-	RNP 1
TF	DIXOT	-	100°(106.6°)	12.6	-	+2800	-	-	-	RNP 1
TF	SULAX	-	055°(062.1°)	5.0	-	+2000	-200	-	-	RNP 1

STAR instruction: LAGIS (FL100 or above) – DIXOT (2800 ft or above) – SULAX (2000 ft or above, Max IAS 200 kt)

**LATVI 1T**

Path Desc	Waypoint Identifier	Fly-over	Course °M(°T)	Dist (NM)	Turn Dir	Altitude	Speed	VPA/RDH	Rec Navaid	Navigation Specification
IF	LATVI	-	-	-	-	+FL100	-	-	-	RNP 1
TF	MQ520	-	177°(183.7°)	4.0	-	+3000	-	-	-	RNP 1
TF	TESVI	-	177°(183.7°)	14.8	-	+2000	-	-	-	RNP 1
TF	SULAX	-	235°(242.4°)	5.0	-	+2000	-200	-	-	RNP 1

STAR instruction: LATVI – MQ520 (3000 ft or above) – TESVI (2000 ft or above) – SULAX (2000 ft or above, Max IAS 200 kt)

**MOVIS 1T**

Path Desc	Waypoint Identifier	Fly-over	Course °M(°T)	Dist (NM)	Turn Dir	Altitude	Speed	VPA/RDH	Rec Navaid	Navigation Specification
IF	MOVIS	-	-	-	-	+FL100	-	-	-	RNP 1
TF	MQ500	-	162°(169.4°)	15.4	-	+5000	-	-	-	RNP 1
TF	TESVI	-	162°(169.5°)	24.1	-	+2000	-	-	-	RNP 1
TF	SULAX	-	235°(242.4°)	5.0	-	+2000	-200	-	-	RNP 1

STAR instruction: MOVIS (FL100 or above) – MQ500 (5000 ft or above) – TESVI (2000 ft or above) – SULAX (2000 ft or above, Max IAS 200 kt)

**TILSA 1T**

Path Desc	Waypoint Identifier	Fly-over	Course °M(°T)	Dist (NM)	Turn Dir	Altitude	Speed	VPA/RDH	Rec Navaid	Navigation Specification
IF	TILSA	-	-	-	-	+FL100	-	-	-	RNP 1
TF	DIXOT	-	132°(139.4°)	21.9	-	+2800	-	-	-	RNP 1
TF	SULAX	-	055°(062.1°)	5.0	-	+2000	-200	-	-	RNP 1

STAR instruction: TILSA (FL100 or above) – DIXOT (2800 ft or above) – SULAX (2000 ft or above, Max IAS 200 kt)