

AIP SWEDEN

ATC Surveillance Minimum Altitude Chart - MALMÖ

AD 2 ESMS 4-91

AD ELEV 237 FEET
HGT and ALT in ft
TA 5000 AMSL

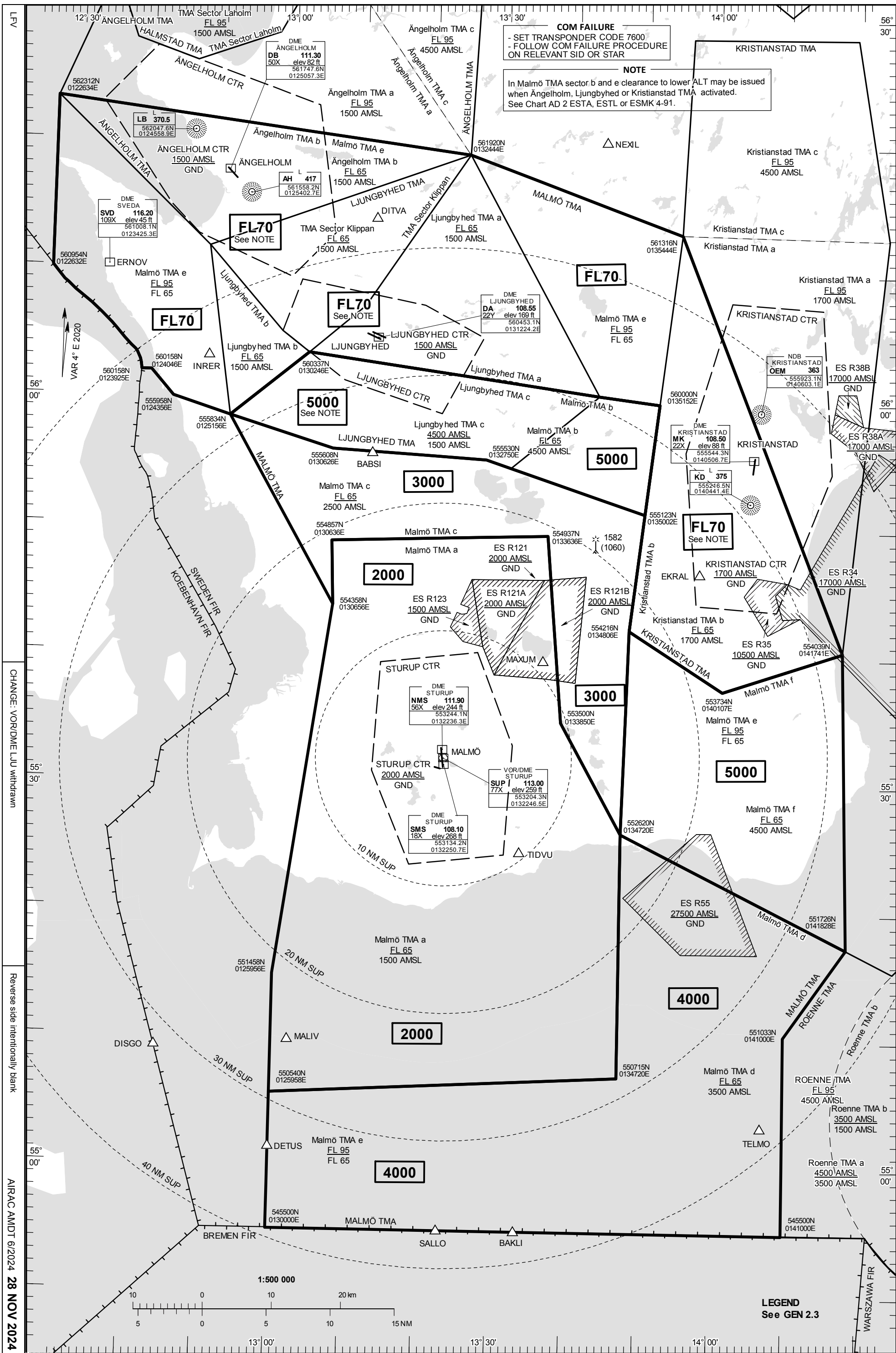
STURUP TOWER 118.805
121.705

STURUP ATIS 129.280

THIS CHART MAY ONLY BE USED FOR CROSS-CHECKING OF ASSIGNED ALTITUDES WHILE IN RECEIPT OF RADAR SERVICE
LEVELS ASSIGNED BY ATC INCLUDE A CORRECTION FOR LOW TEMPERATURE EFFECT

COM FAILURE
- SET TRANSPONDER CODE 7600
- FOLLOW COM FAILURE PROCEDURE
ON RELEVANT SID OR STAR

NOTE
In Malmö TMA sector b and e clearance to lower ALT may be issued
when Ängelholm, Ljungbyhed or Kristianstad TMA activated.
See Chart AD 2 ESTA, ESTL or ESMK 4-91.



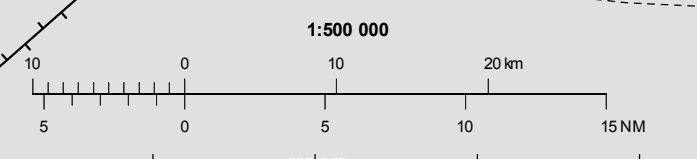
LFV

VAR 4° E 2020

CHANGE: VORDME LJU withdrawn

Reverse side intentionally blank

AIRAC AMDT 6/2024 28 NOV 2024



LEGEND
See GEN 2.3