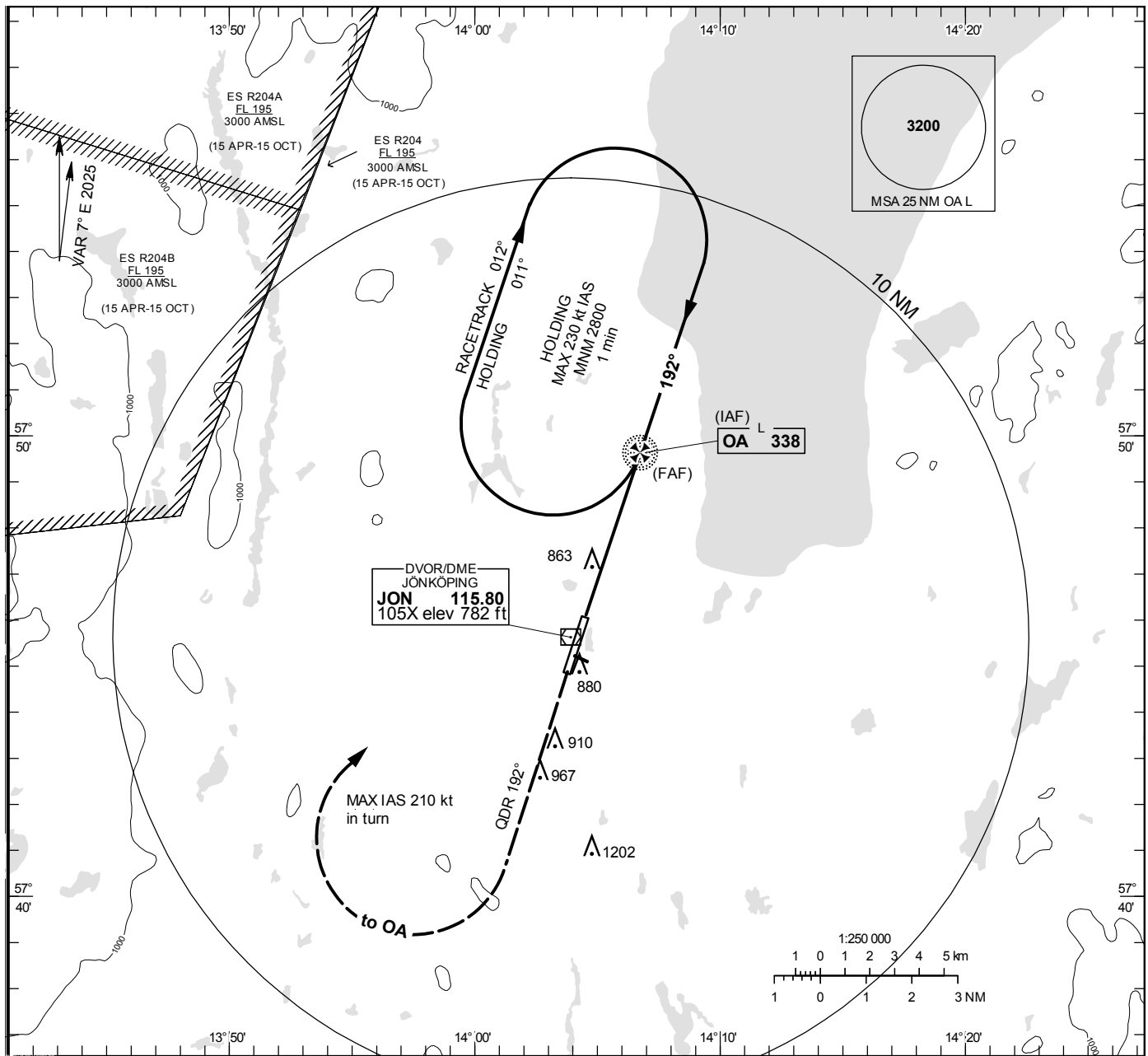


NDB RWY 19

JÖNKÖPING TOWER 118.255

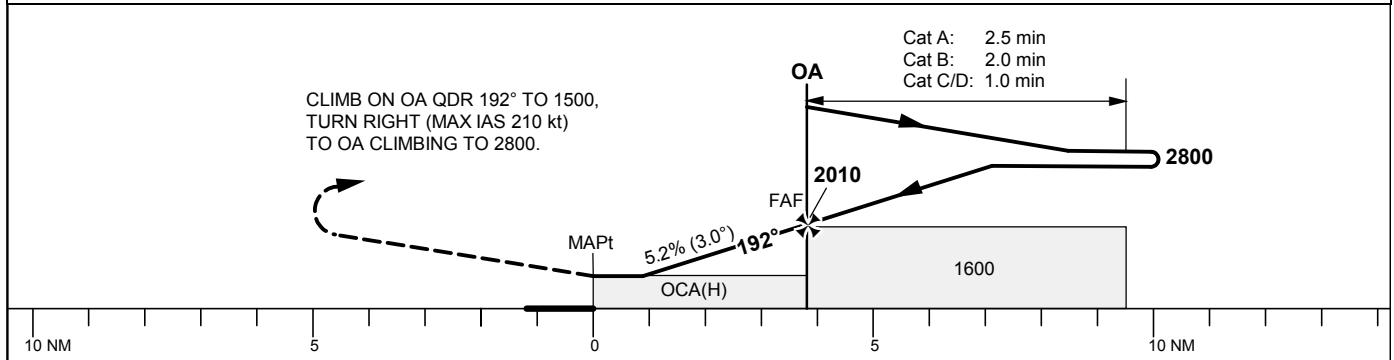
THR ELEV 739.1 ft, AD ELEV 742 ft
OCH are related to THR.
Circling OCH are related to AD ELEV.
BRG are MAG
ALT. HGT and ELEV in ft.

INSTRUMENT
APPROACH
CHART – ICAO



TA 5000 ft AMSL

Final APCH line 1° offset



OCA (H)					Final approach	Distance FAF-MAPt 3.8 NM						
Cat of ACFT	A	B	C	D	DME JON NM	2		3		4		
Straight-in Approach	1130(400)				ALT	1280		1600		1920		
Circling (Max IAS 190 kt)	1210(470)	1270(530)	1600(860)	1600(860)	GS	kt	80	100	120	140	160	180
					Time	min:s	2:51	2:17	1:54	1:38	1:26	1:16
					Rate of descent	ft/min	425	530	635	745	850	955