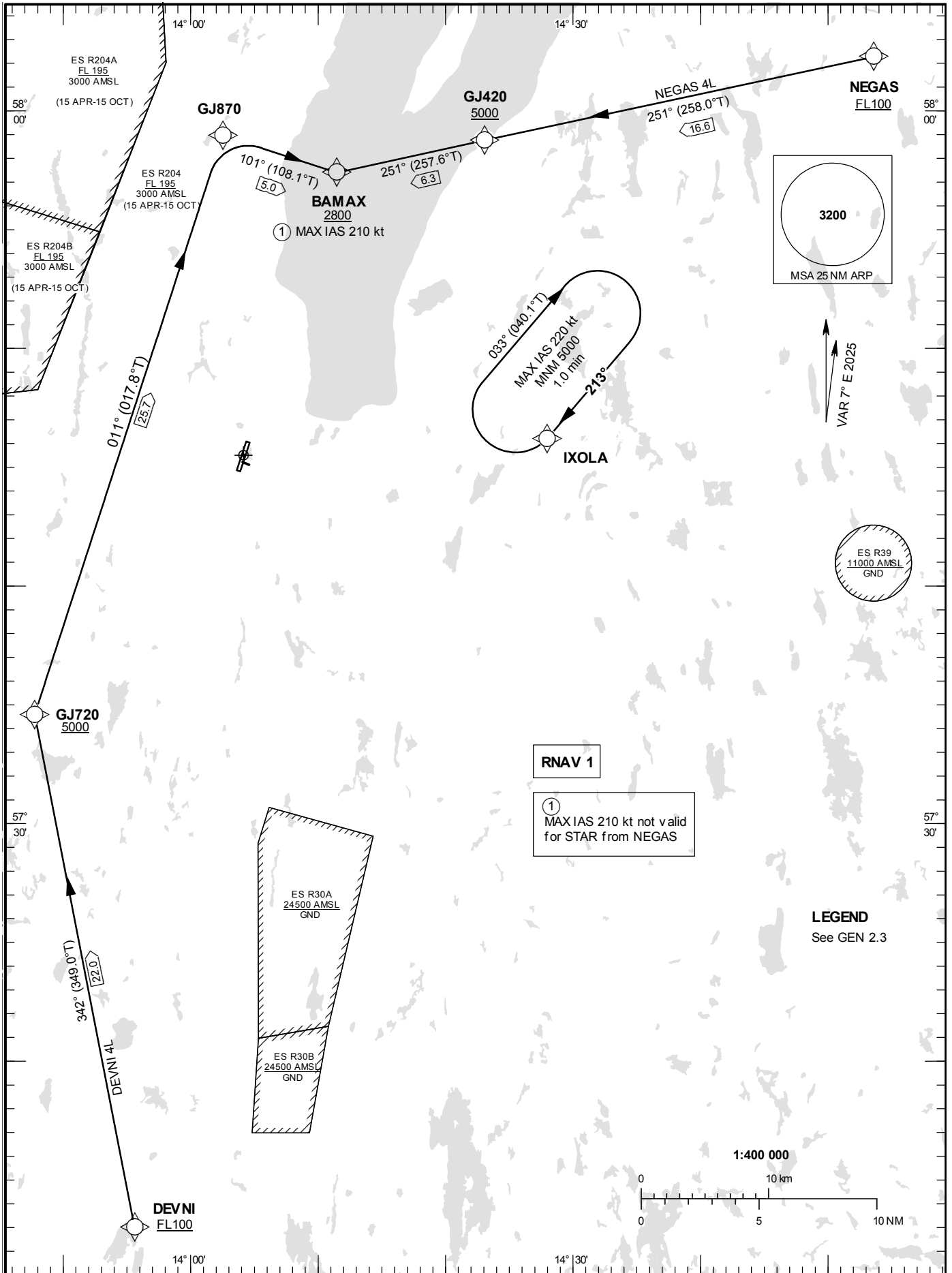


STANDARD INSTRUMENT
ARRIVAL CHART (STAR) -
ICAO

HGT and ALT in ft
BRG are MAG (True)
TA 5000 ft AMSL

JÖNKÖPING TOWER 118.255

RNAV (GNSS) RWY 19
DEVNI 4L, NEGAS 4L



Prescribed Coding of RNAV STAR for RWY 19

DEVNI 4L

Path Term	Waypoint Identifier	Fly-over	Course °M(°T)	Dist (NM)	Turn Dir	Rest Alts (ft AMSL)	Speed Limits (kt)	VPA/ RDH (°/ft)	Rec Navaid	Navigation Specification
IF	DEVNI	-	-	-	-	+FL100	-	-	-	RNAV 1
TF	GJ720	-	342°(349.0°)	22.0	-	+5000	-	-	-	RNAV 1
TF	GJ870	-	011°(017.8°)	25.7	-	-	-	-	-	RNAV 1
TF	BAMAX	-	101°(108.0°)	5.0	-	+2800	-210	-	-	RNAV 1

STAR instruction: DEVNI (FL100 or above) – GJ720 (5000 ft or above) – GJ870 – BAMAX (2800 ft or above, MAX IAS 210 kt)

NEGAS 4L

Path Term	Waypoint Identifier	Fly-over	Course °M(°T)	Dist (NM)	Turn Dir	Rest Alts (ft AMSL)	Speed Limits (kt)	VPA/ RDH (°/ft)	Rec Navaid	Navigation Specification
IF	NEGAS	-	-	-	-	+FL100	-	-	-	RNAV 1
TF	GJ420	-	251°(258.0°)	16.6	-	+5000	-	-	-	RNAV 1
TF	BAMAX	-	251°(257.6°)	6.3	-	+2800	-	-	-	RNAV 1

STAR instruction: NEGAS (FL100 or above) – GJ420 (5000 ft or above) – BAMAX (2800 ft or above)