

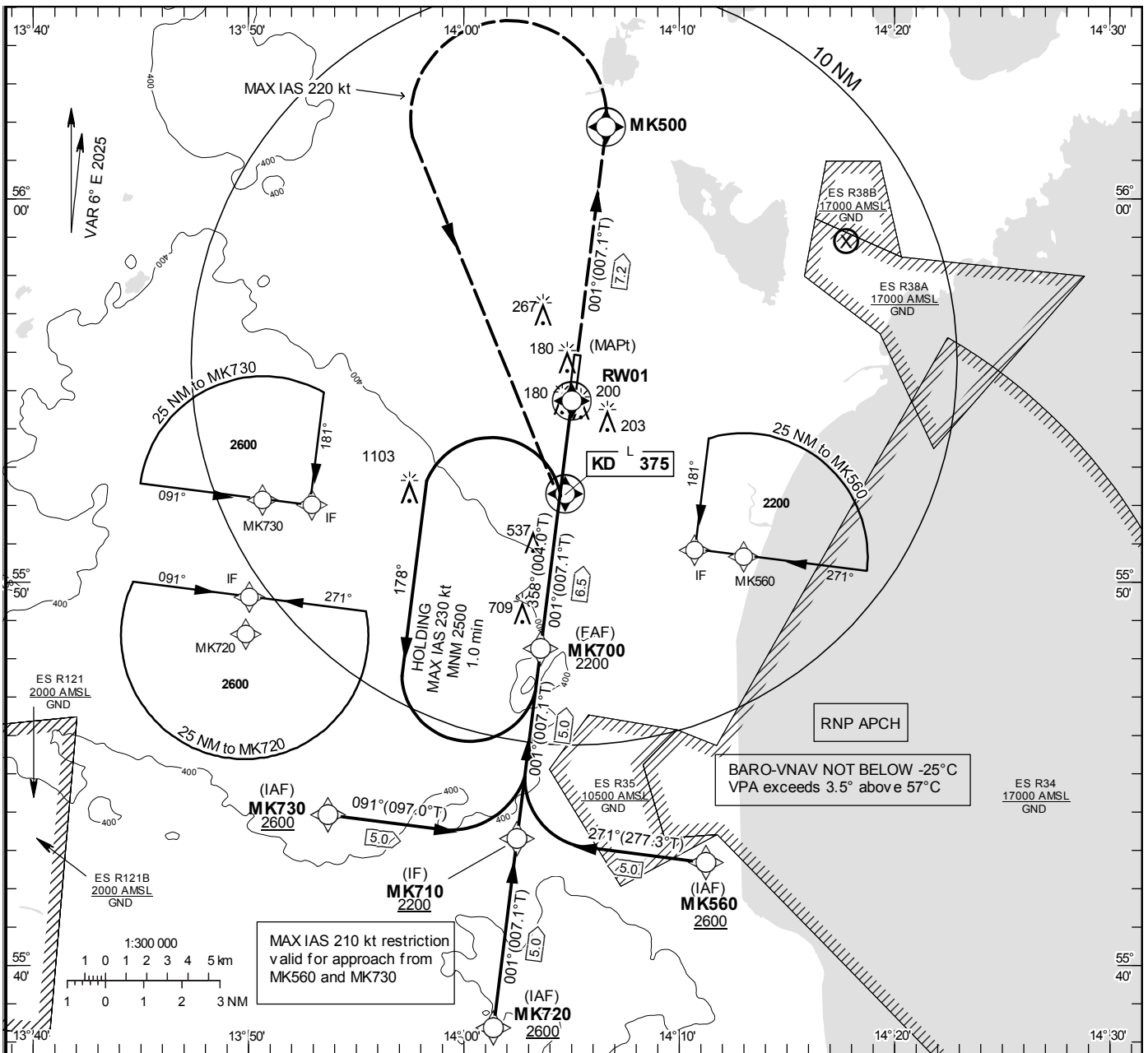
**INSTRUMENT  
APPROACH  
CHART – ICAO**

**THR ELEV 77 ft, AD ELEV 77 ft**  
 OCH are related to THR.  
 BRG are MAG (True).  
 ALT, HGT and ELEV in ft.

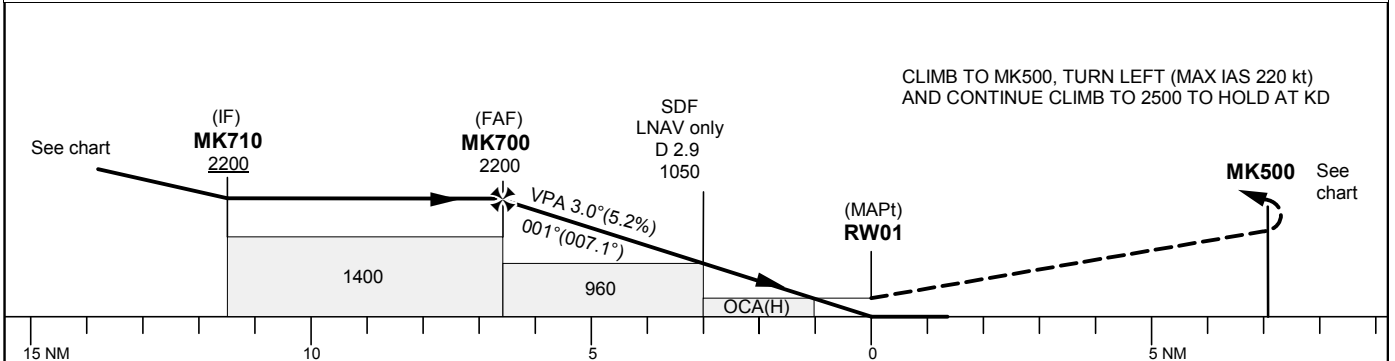
KRISTIANSTAD TOWER 129.355

**RNP RWY 01**

EGNOS Ch 69797 E 01A



TA 5000 ft AMSL RDH 50.0 ft



Cat of ACFT	OCA (H)				Final approach Dist to RW 01	Distance FAF-MAPt 6.5 NM						
	A	B	C	D		6	5	4	3	2		
LPV	310 (233)	323 (246)	331 (254)	341 (264)	ALT	2040	1720	1400	1080	760		
LNAV/VNAV	331 (254)	343 (266)	351 (274)	361 (284)	GS	kt	80	100	120	140	160	180
LNAV	450 (380)				Rate of descent	ft/min	425	530	635	745	850	955
Circling	570 (500)	570 (500)	940 (870)	1500 (1430)								
Circling E RWY	500 (430)	570 (500)	940 (870)	940 (870)								

## RNP RWY 01 via MK720

Path Desc	Waypoint Identifier	Fly-over	Course °M(°T)	Dist (NM)	Turn Dir	Altitude	Speed	VPA/RDH	Rec Navaid	Navigation Specification
IF	MK720	-	-	-	-	+2600	-	-	-	RNP APCH
TF	MK710	-	001 <sup>0</sup> (007.1 <sup>0</sup> )	5.0	-	+2200	-	-	-	RNP APCH

## RNP RWY 01 via MK560

Path Desc	Waypoint Identifier	Fly-over	Course °M(°T)	Dist (NM)	Turn Dir	Altitude	Speed	VPA/RDH	Rec Navaid	Navigation Specification
IF	MK560	-	-	-	-	+2600	-	-	-	RNP APCH
TF	MK710	-	271 <sup>0</sup> (277.3 <sup>0</sup> )	5.0	-	+2200	-210	-	-	RNP APCH

## RNP RWY 01 via MK730

Path Desc	Waypoint Identifier	Fly-over	Course °M(°T)	Dist (NM)	Turn Dir	Altitude	Speed	VPA/RDH	Rec Navaid	Navigation Specification
IF	MK730	-	-	-	-	+2600	-	-	-	RNP APCH
TF	MK710	-	091 <sup>0</sup> (097.0 <sup>0</sup> )	5.0	-	+2200	-210	-	-	RNP APCH

Path Desc	Waypoint Identifier	Fly-over	Course °M(°T)	Dist (NM)	Turn Dir	Altitude	Speed	VPA/RDH	Rec Navaid	Navigation Specification
IF	MK710	-	-	-	-	+2200	-	-	-	RNP APCH
TF	MK700	-	001 <sup>0</sup> (007.1 <sup>0</sup> )	5.0	-	+2200	-	-	-	RNP APCH
TF	RW01	Y	001 <sup>0</sup> (007.1 <sup>0</sup> )	6.5	-	@127	-	-3.0/50	-	RNP APCH
TF	MK500	Y	001 <sup>0</sup> (007.1 <sup>0</sup> )	7.2	-	-	-	-	-	RNP APCH
DF	KD	Y	-	-	L	+2500	-220	-	-	RNP APCH

Path Desc	Waypoint Identifier	Fly-over	Course °M(°T)	Dist (NM)	Turn Dir	Altitude	Speed	VPA/RDH	Rec Navaid	Navigation Specification
HM	KD	Y	358 <sup>0</sup> (004.0 <sup>0</sup> )	-	L	+2500	-230	-	-	RNAV 1

## FAS Data Block

## RNP RWY 01

## Input data

Operation Type	0
SBAS Provider	1 (EGNOS)
Airport Identifier	ESMK
Runway	01
Runway Letter	0 (None)
Approach Performance Designator	0
Route Indicator	
Reference Path Data Selector	0
Reference Path Identifier	E01A
LTP/FTP Latitude	555442.4900N
LTP/FTP Longitude	0140459.9740E
LTP/FTP Ellipsoidal Height (metres)	58.2
FPAP Latitude	555553.5990N
Delta FPAP Latitude (seconds)	71.1090
FPAP Longitude	0140515.8620E
Delta FPAP Longitude (seconds)	15.8880
Threshold Crossing Height	50.0
TCH Units Selector	0 (feet)
Glidepath Angle (degrees)	3.00
Course Width (metres)	105.00
Length Offset (metres)	0
HAL (metres)	40.0
VAL (metres)	50.0

## Output data

Data Block	10 0B 0D 13 05 01 00 00 01 31 30 05 74 A7 FE 17 8C 3D 0B 06 46 16 8A 2B 02 20 7C 00 F4 01 2C 01 64 00 C8 FA 74 A0 5E 4F
Calculated CRC Value	74A05E4F

## Required Additional Data

ICAO Code	ES
LTP/FTP Orthometric Height (metres)	23.4