

VISUAL APPROACH CHART – ICAO

1:250000
1 0 1 2 3 4 5 km
1 0 1 2 3 NM

AD ELEV 164 FEET

ELEV and ALT in ft
HGT in ft above AD ELEV

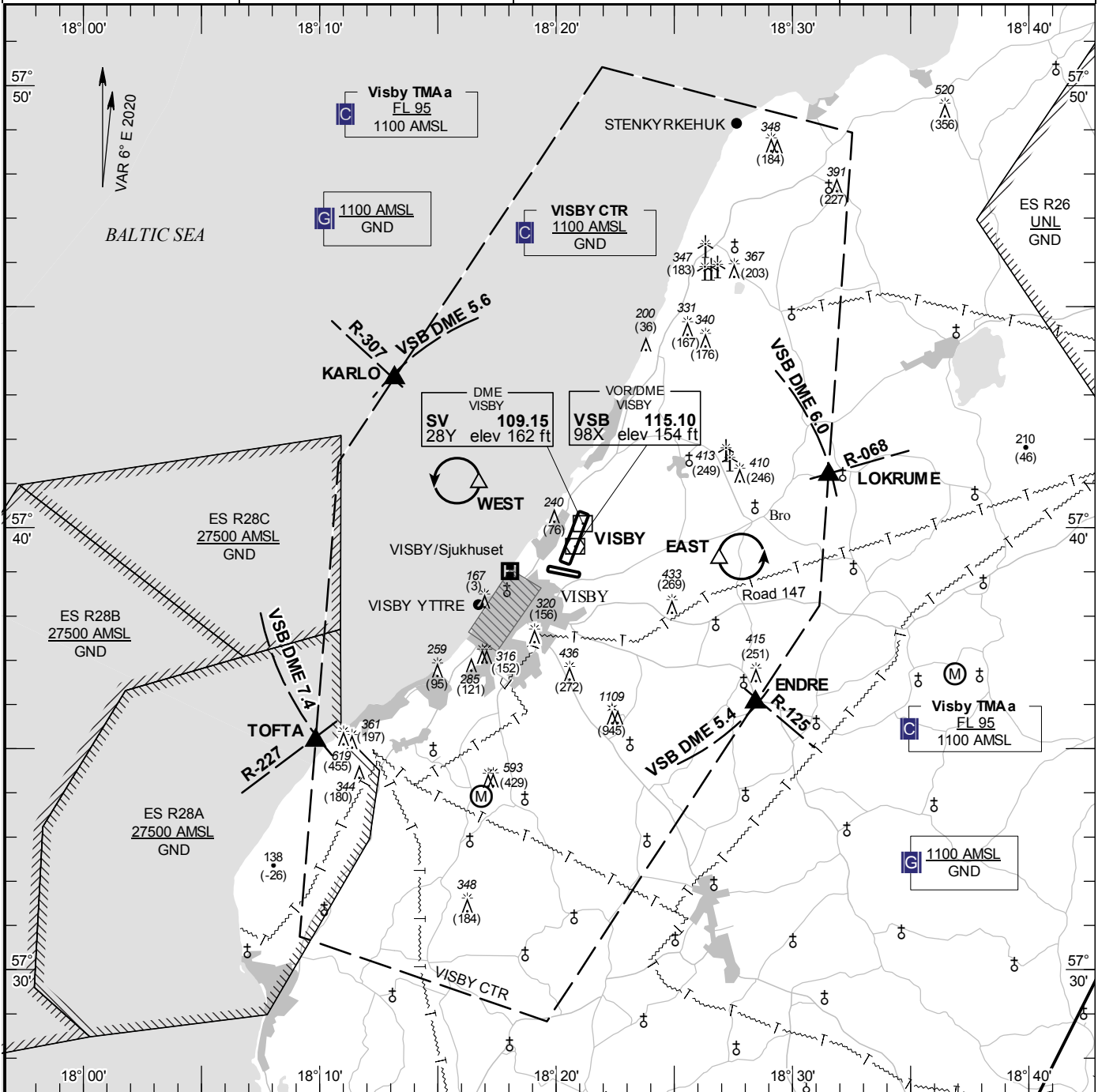
TA 5000 AMSL

VISBY TOWER 120.305

VISBY APPROACH 126.155

AD 2 ESSV 6-1

VISBY SWEDEN



Communication failure

- 1 SQUAWK 7600
- 2 Enter CTR via KARLO/TOFTA – Holding WEST or via ENDRE/LOKRUME – Holding EAST at or below 1000 ft AMSL to traffic circuit. Transmit blind your intentions.
- 3 Flash LDG-lights and watch TWR for optical signals.

RWY NR	THR ELEV	PAPI (MEHT)
03	140 ft	Left/3.00° (56 ft)
21	137.0 ft	Left/3.00° (62 ft)

Entry / exit point

KARLO	574322N 0181310E
LOKRUME	574111N 0181312E
ENDRE	573602N 0182826E
TOFTA	573510N 0180950E

Holding

- EAST:** Hold north of road 147 and south of BRO church, east of point 573917N 0182654E
- WEST:** Hold 3NM WNW of the aerodrome over the sea, west of point 574100N 0181643E

Legend
See GEN 2.3

Remark

Noise sensitive area should be avoided below 2000 ft AMSL