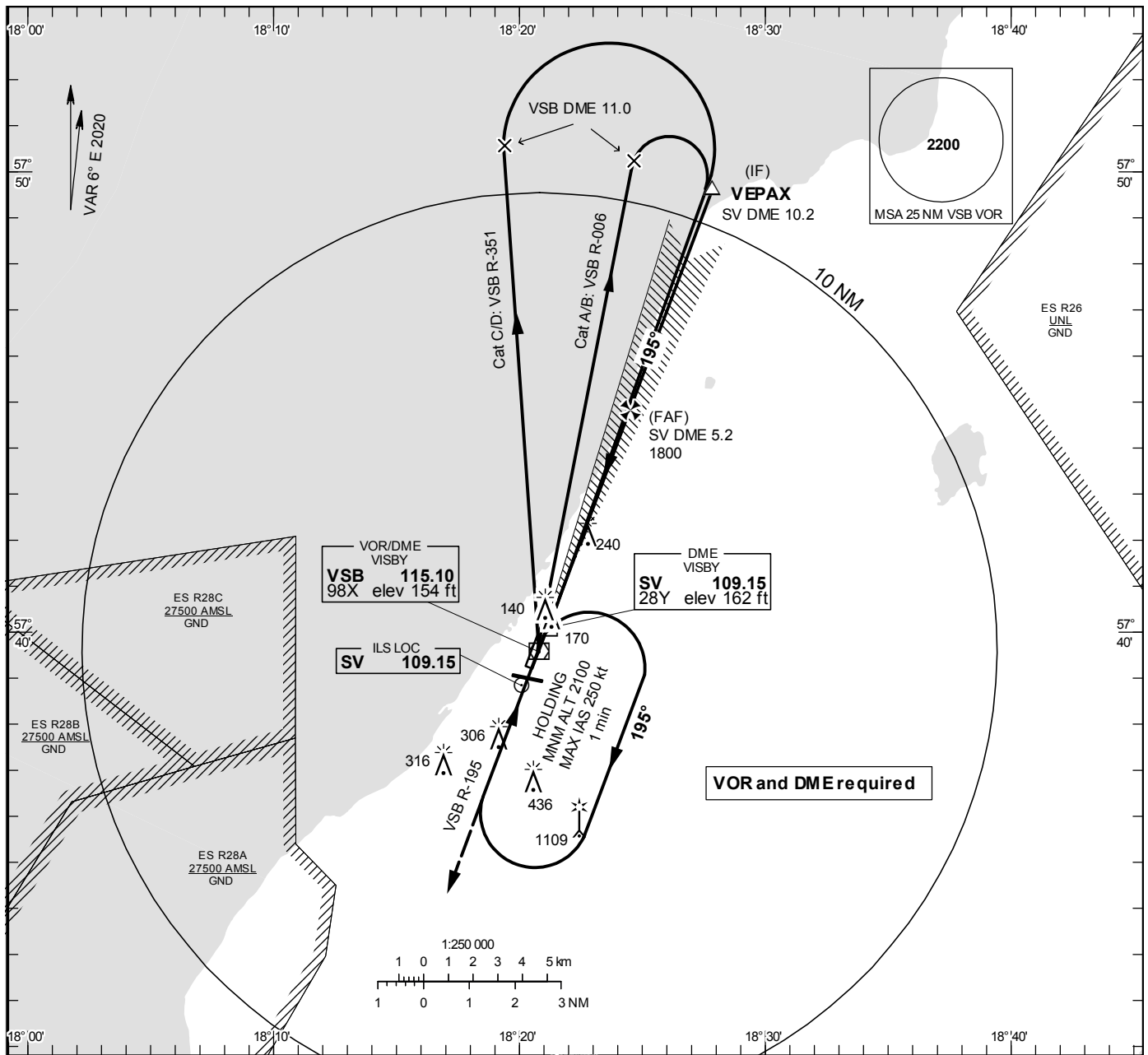


ILS y or LOC y RWY 21

VISBY TOWER	120.305
VISBY APPROACH	126.155

THR ELEV 137.0 ft, AD ELEV 164 ft
 OCH are related to THR.
 Circling OCH are related to AD ELEV.
 BRG are MAG
 ALT. HGT and ELEV in ft.

INSTRUMENT
APPROACH
CHART – ICAO



TA 5000 ft AMSL

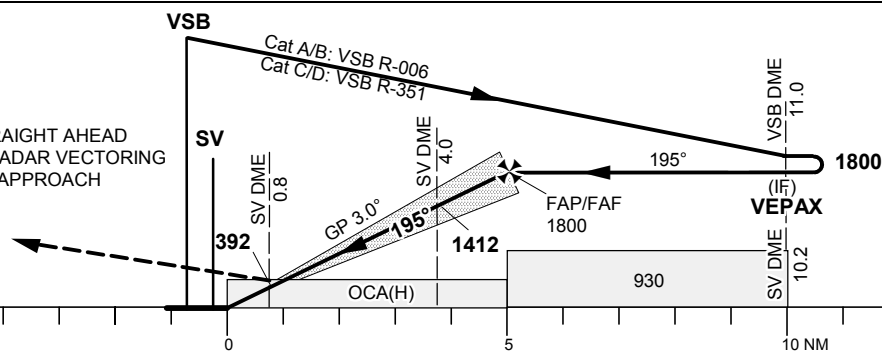
RDH 57.1 ft

*Timing not authorized for defining the MAPt

OM replaced by SV DME 4.0
 MM replaced by SV DME 0.8

CLIMB STRAIGHT AHEAD
 TO 2200, RADAR VECTORED
 FOR NEW APPROACH

LOC
 FAF at SV DME 5.2 1800
 MAPt at SV DME 0.8
 Descent grad. 5.2%



Cat of ACFT	OCA (H)				Final approach DME SV NM	LOC Distance FAF-MAPt 4.4 NM*							
	A	B	C	D		5	4	3	2				
Straight-in Approach	CAT I	285(148)	296(159)	304(167)	316(179)	1731	1412	1094	775				
	LOC	500(360)				GS	kt	80	100	120	140	160	180
Circling		630(460)	780(610)	1510(1340)	1510(1340)	Time	min:s	03:19	02:39	02:13	01:54	01:39	01:28
Circling W RWY		630(460)	630(460)	740(570)	1010(840)	Rate of descent	ft/min	425	530	635	745	850	955