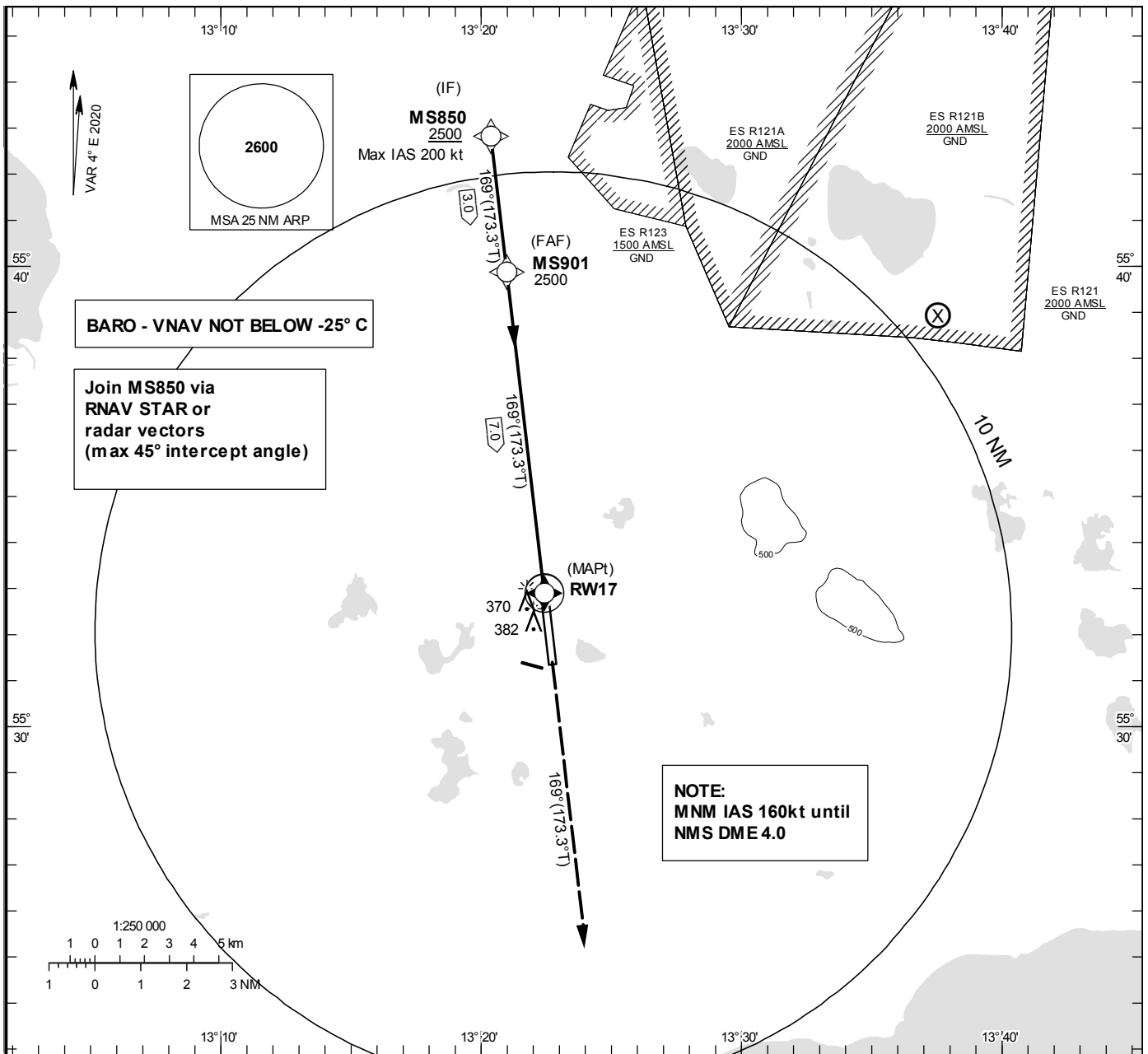


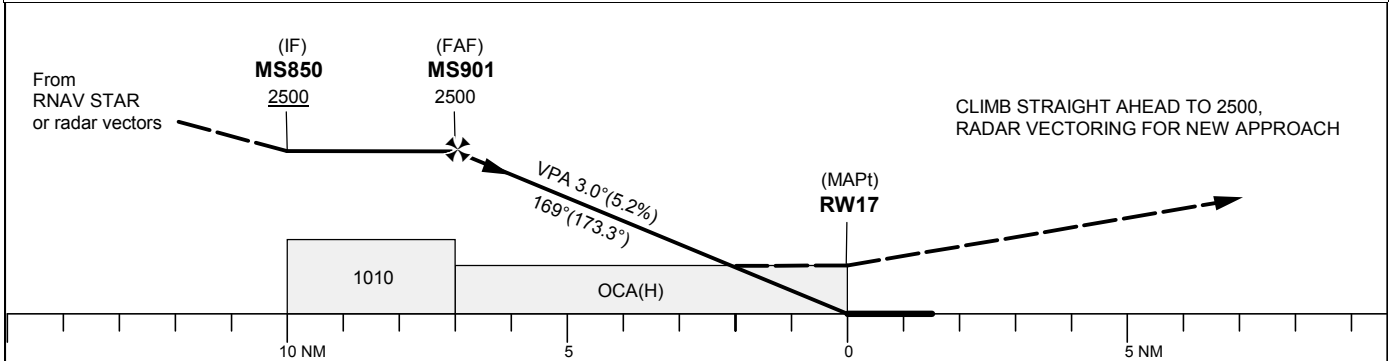
**INSTRUMENT APPROACH CHART – ICAO**  
**THR ELEV 208.8 ft, AD ELEV 237 ft**  
 OCH are related to THR.  
 BRG are MAG (True).  
 ALT, HGT and ELEV in ft.

STURUP TOWER	118.805
SWEDEN CONTROL	134.980
STURUP ATIS	129.280

**RNP z RWY 17**



TA 5000 ft AMSL RDH 50 ft



OCA (H)					Final approach	Distance FAF-MAPt 7.0 NM						
Cat of ACFT	A	B	C	D	Dist to RWY 17	6	5	4	3	2		
LNAV/VNAV	520(320)	530(330)	540(340)	550(350)	ALT	2170	1850	1530	1210	900		
LNAV	620(420)				GS	kt	80	100	120	140	160	180
					Rate of descent	ft/min	425	530	635	745	850	955

## RNP z RWY 17 via RNAV STAR or radar vectors

Path Desc	Waypoint Identifier	Fly-over	Course °M(°T)	Dist (NM)	Turn Dir	Altitude	Speed	VPA/RDH	Rec Navaid	Navigation Specification
IF	MS850	-	-	-	-	+2500	-200	-	-	RNP APCH
TF	MS901	-	169°(173.3°)	3.0	-	@2500	-	-	-	RNP APCH
TF	RW17	Y	169°(173.3°)	7.0	-	@259	-	-3.0/50	-	RNP APCH
CA	-	-	169°(173.3°)	-	-	+2500	-	-	-	RNP APCH
VM	-	-	169°	-	-	-	-	-	-	RNP APCH