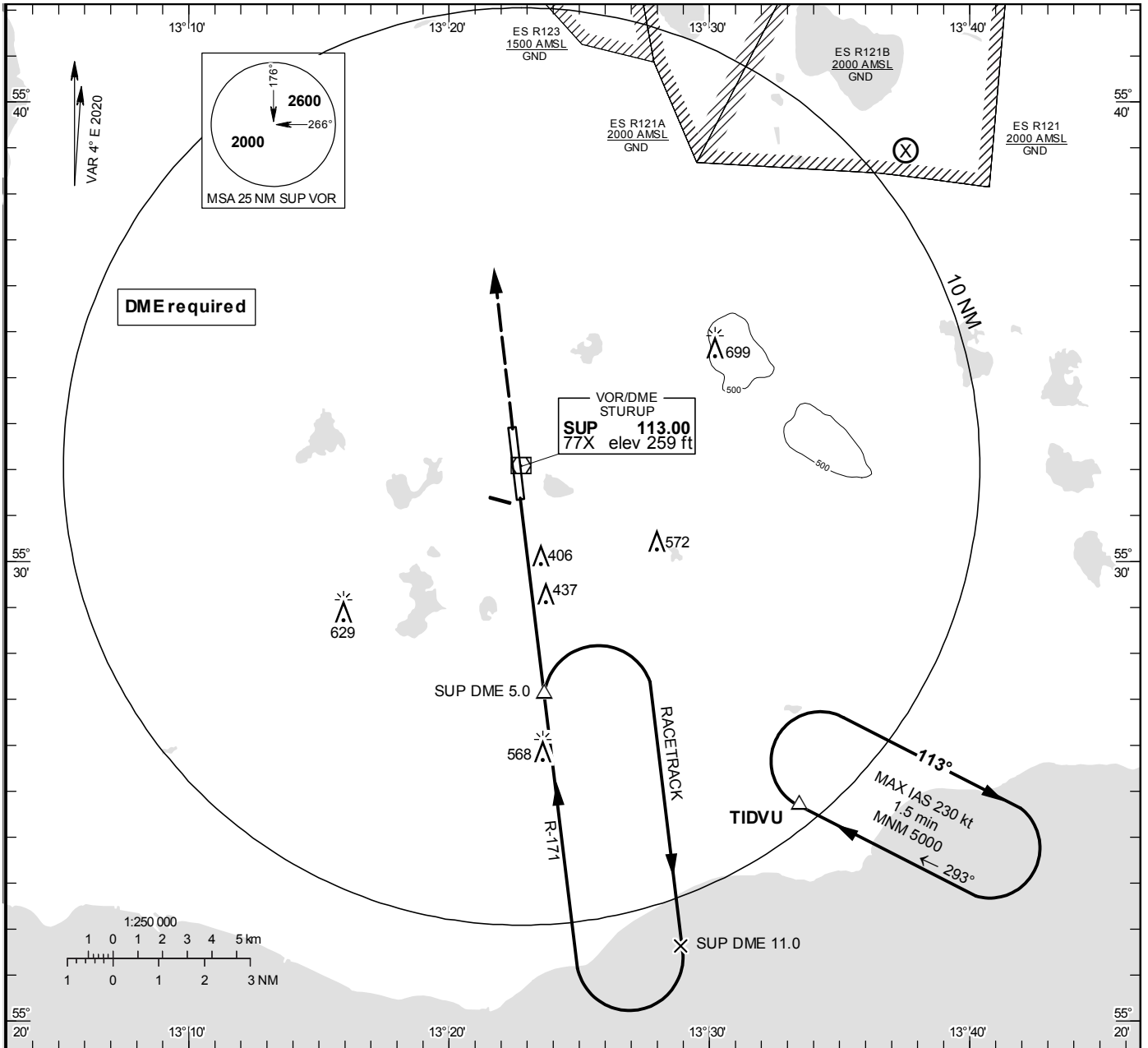


**INSTRUMENT
APPROACH
CHART – ICAO**

THR ELEV 236.3 ft, AD ELEV 237 ft
 OCH are related to THR.
 Circling OCH are related to AD ELEV.
 BRG are MAG
 ALT, HGT and ELEV in ft.

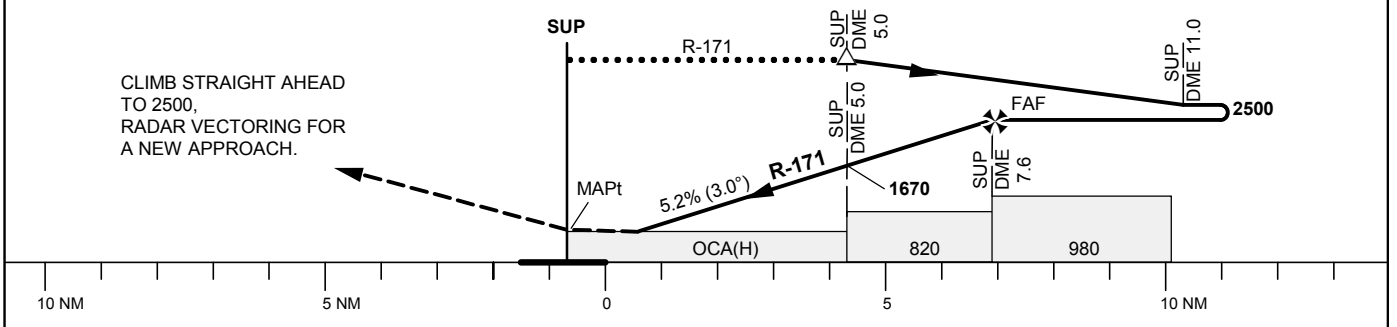
STURUP TOWER	118.805
SWEDEN CONTROL	134.980
STURUP ATIS	129.280

VOR RWY 35



TA 5000 ft AMSL Final APCH line offset 1° *Timing not authorized for defining the MAPt

Special COM Failure procedures see AIP-AD 2



Cat of ACFT	OCA (H)				Final approach DME SUP NM	Distance FAF-MAPt 7.6 NM*						
	A	B	C	D		7	6	5	4	3	2	
Straight-in Approach	690(460)				ALT	2300	1980	1670	1350	1030	710	
					GS	kt	80	100	120	140	160	180
					Time	min:s	5:44	4:35	3:49	3:16	2:52	2:33
Circling	710(480)	740(510)	970(740)	1100(870)	Rate of descent	ft/min	425	535	640	745	850	960