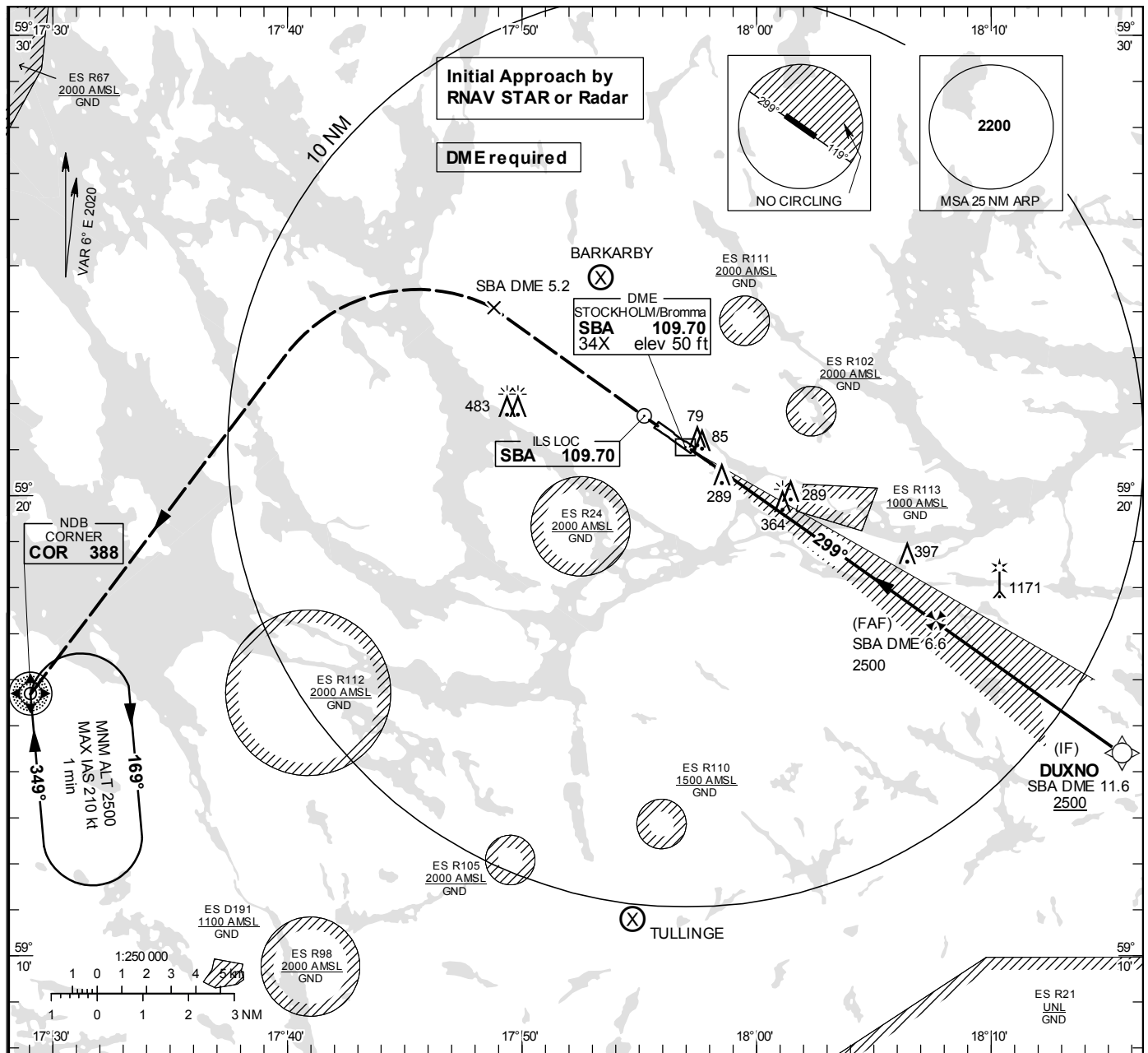


ILS or LOC RWY 30

BROMMA TOWER	118.105
STOCKHOLM APPROACH	120.155
BROMMA ATIS	122.455

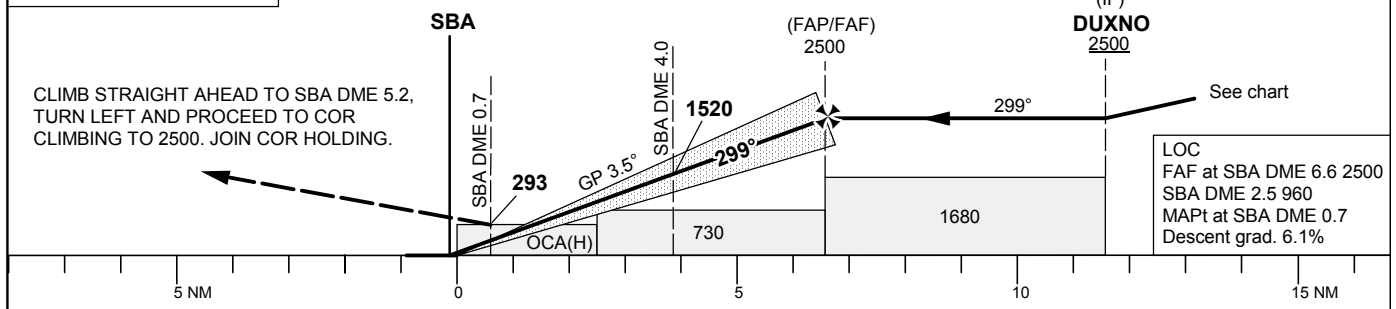
THR ELEV 42.8 ft, AD ELEV 47 ft
OCH are related to THR.
Circling OCH are related to AD ELEV.
BRG are MAG
ALT, HGT and ELEV in ft.

INSTRUMENT
APPROACH
CHART – ICAO



TA 5000 ft AMSL RDH 36.1 ft *Timing not authorized for defining the MAPt

OM replaced by SBA DME 4.0
MM replaced by SBA DME 0.7



		OCA (H)			Final approach	LOC Distance FAF-MAPt 5.9 NM*					
Cat of ACFT		A	B	C	DME SBA	NM	6	5	4	3	2
Straight-in Approach	CAT I	221(178)	232(189)	243(200)	ALT	ft	2263	1892	1520	1148	777
	LOC	550(500)			GS	kt	80	100	120	140	160
Circling SW RWY		620(570)	670(620)	920(870)	Time	min:s	4:27	3:34	2:58	2:33	2:14
					Rate of descent	ft/min	495	620	745	865	990