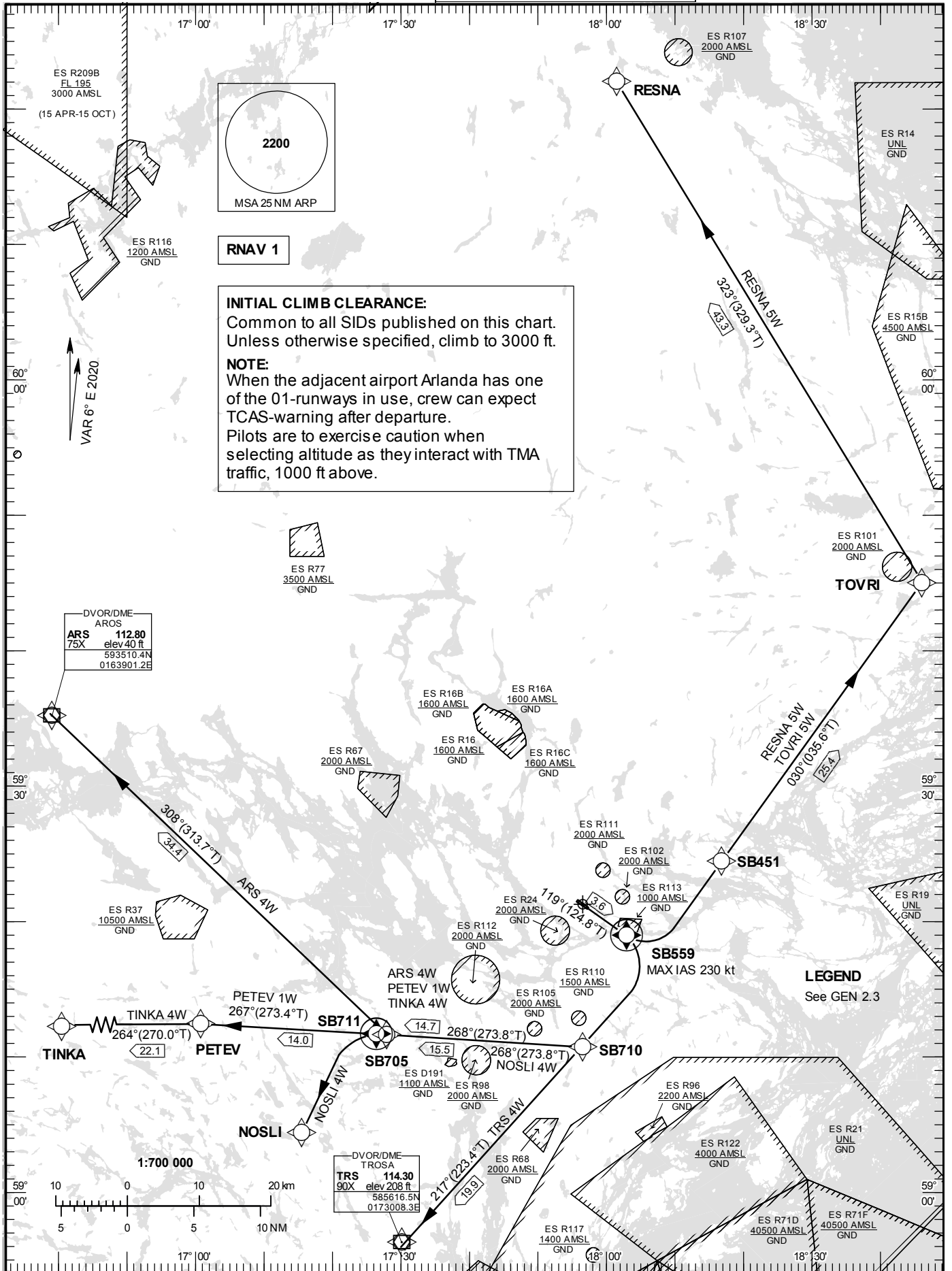


STANDARD INSTRUMENT
DEPARTURE CHART (SID) -
ICAO

HGT and ALT in ft
BRG are MAG (True)
TA 5000 ft AMSL

BROMMA TOWER	118.105
BROMMA ATIS	122.455
STOCKHOLM APPROACH	123.755

RNAV (GNSS) SID RWY 12



Prescribed Coding of RNAV SID for RWY 12

Note:

INITIAL CLIMB CLEARANCE: Climb to 3000 ft unless otherwise specified. Common to all SIDs published on charts.

Aircraft proceeding on RNAV SID shall use 400 ft per NM (6.6%) as a minimum gradient of climb up to 3000 ft AMSL. Aircraft unable to conform with this procedure shall inform ATS accordingly.

ACFT unable to follow RNAV SID: Report "unable RNAV SID due RNAV type" to Clearance Delivery and "unable RNAV SID" to STOCKHOLM APPROACH/DEPARTURE on frequency indicated below at first contact.

Aircraft from STOCKHOLM/Bromma shall not be operated at an airspeed of more than 250 kt IAS below FL100 unless otherwise instructed.

For ARS 4W, NOSLI 4W, PETEV 1W, TINKA 4W, TRS 4W: At 1500 ft, unless otherwise instructed, contact STOCKHOLM APPROACH on frequency indicated below.

For RESNA 5W, TOVRI 5W: At 1500 ft, unless otherwise instructed, contact STOCKHOLM DEPARTURE on frequency indicated below.

ARS 4W

Path Term	Waypoint Identifier	Fly-over	Course °M(°T)	Dist (NM)	Turn Dir	Rest Alts (ft AMSL)	Speed Limits (kt)	VPA/RDH (°/ft)	Rec Navaid	Navigation Specification
CF	SB559	Y	119°(124.8°)	3.6	-	-	-230	-	ARL	RNAV 1
DF	SB710	-	-	-	R	-	-	-	-	RNAV 1
TF	SB705	-	268°(273.8°)	14.7	-	-	-	-	-	RNAV 1
TF	ARS	-	308°(313.7°)	34.4	-	-	-	-	-	RNAV 1

SID instruction: Climb on track 119° to SB559 (max IAS 230 kt) – SB710 – SB705 – ARS. **120.155**

ACFT unable to follow RNAV SID: Climb on track 119° to SB DME 4.3 (max IAS 230 kt). Turn right to track 220°. Expect radar vectors to ARS.

NOSLI 4W

Path Term	Waypoint Identifier	Fly-over	Course °M(°T)	Dist (NM)	Turn Dir	Rest Alts (ft AMSL)	Speed Limits (kt)	VPA/RDH (°/ft)	Rec Navaid	Navigation Specification
CF	SB559	Y	119°(124.8°)	3.6	-	-	-230	-	ARL	RNAV 1
DF	SB710	-	-	-	R	-	-	-	-	RNAV 1
TF	SB711	Y	268°(273.8°)	15.5	-	-	-	-	-	RNAV 1
DF	NOSLI	-	-	-	L	-	-	-	-	RNAV 1

SID instruction: Climb on track 119° to SB559 (max IAS 230 kt) – SB710 – SB711 – NOSLI. **120.155**

ACFT unable to follow RNAV SID: Climb on track 119° to SB DME 4.3 (max IAS 230 kt). Turn right to track 220°. Expect radar vectors to NOSLI.

PETEV 1W

Path Term	Waypoint Identifier	Fly-over	Course °M(°T)	Dist (NM)	Turn Dir	Rest Alts (ft AMSL)	Speed Limits (kt)	VPA/RDH (°/ft)	Rec Navaid	Navigation Specification
CF	SB559	Y	119°(124.8°)	3.6	-	-	-230	-	ARL	RNAV 1
DF	SB710	-	-	-	R	-	-	-	-	RNAV 1
TF	SB705	-	268°(273.8°)	14.7	-	-	-	-	-	RNAV 1
TF	PETEV	-	267°(273.4°)	14.0	-	-	-	-	-	RNAV 1

SID instruction: Climb on track 119° to SB559 (max IAS 230 kt) – SB710 – SB705 – PETEV. **120.155**

ACFT unable to follow RNAV SID: Climb on track 119° to SB DME 4.3 (max IAS 230 kt). Turn right to track 220°. Expect radar vectors to PETEV.

RESNA 5W

Path Term	Waypoint Identifier	Fly-over	Course °M(°T)	Dist (NM)	Turn Dir	Rest Alts (ft AMSL)	Speed Limits (kt)	VPA/ RDH (°/ft)	Rec Navaid	Navigation Specification
CF	SB559	Y	119°(124.8°)	3.6	-	-	-230	-	ARL	RNAV 1
DF	SB451	-	-	-	L	-	-	-	-	RNAV 1
TF	TOVRI	-	030°(035.6°)	25.4	-	-	-	-	-	RNAV 1
TF	RESNA	-	323°(329.3°)	43.3	-	-	-	-	-	RNAV 1

SID instruction: Climb on track 119° to SB559 (max IAS 230 kt) – SB451 – TOVRI – RESNA. **130.330**

ACFT unable to follow RNAV SID: Climb on track 119° to SB DME 4.3 (max IAS 230 kt). Turn left to track 030°. Expect radar vectors to RESNA.

TINKA 4W

Path Term	Waypoint Identifier	Fly-over	Course °M(°T)	Dist (NM)	Turn Dir	Rest Alts (ft AMSL)	Speed Limits (kt)	VPA/ RDH (°/ft)	Rec Navaid	Navigation Specification
CF	SB559	Y	119°(124.8°)	3.6	-	-	-230	-	ARL	RNAV 1
DF	SB710	-	-	-	R	-	-	-	-	RNAV 1
TF	SB705	-	268°(273.8°)	14.7	-	-	-	-	-	RNAV 1
TF	PETEV	-	267°(273.4°)	14.0	-	-	-	-	-	RNAV 1
TF	TINKA	-	264°(270.0°)	22.1	-	-	-	-	-	RNAV 1

SID instruction: Climb on track 119° to SB559 (max IAS 230 kt) – SB710 – SB705 – PETEV – TINKA. **120.155**

ACFT unable to follow RNAV SID: Climb on track 119° to SB DME 4.3 (max IAS 230 kt). Turn right to track 220°. Expect radar vectors to TINKA.

TOVRI 5W

Path Term	Waypoint Identifier	Fly-over	Course °M(°T)	Dist (NM)	Turn Dir	Rest Alts (ft AMSL)	Speed Limits (kt)	VPA/ RDH (°/ft)	Rec Navaid	Navigation Specification
CF	SB559	Y	119°(124.8°)	3.6	-	-	-230	-	ARL	RNAV 1
DF	SB451	-	-	-	L	-	-	-	-	RNAV 1
TF	TOVRI	-	030°(035.6°)	25.4	-	-	-	-	-	RNAV 1

SID instruction: Climb on track 119° to SB559 (max IAS 230 kt) – SB451 – TOVRI. **130.330**

ACFT unable to follow RNAV SID: Climb on track 119° to SB DME 4.3 (max IAS 230 kt). Turn left to track 030°. Expect radar vectors to TOVRI.

TRS 4W

Path Term	Waypoint Identifier	Fly-over	Course °M(°T)	Dist (NM)	Turn Dir	Rest Alts (ft AMSL)	Speed Limits (kt)	VPA/ RDH (°/ft)	Rec Navaid	Navigation Specification
CF	SB559	Y	119°(124.8°)	3.6	-	-	-230	-	ARL	RNAV 1
DF	SB710	-	-	-	R	-	-	-	-	RNAV 1
TF	TRS	-	217°(223.4°)	19.9	-	-	-	-	-	RNAV 1

SID instruction: Climb on track 119° to SB559 (max IAS 230 kt) – SB710 – TRS. **120.155**

ACFT unable to follow RNAV SID: Climb on track 119° to SB DME 4.3 (max IAS 230 kt). Turn right to track 220°. Expect radar vectors to TRS.