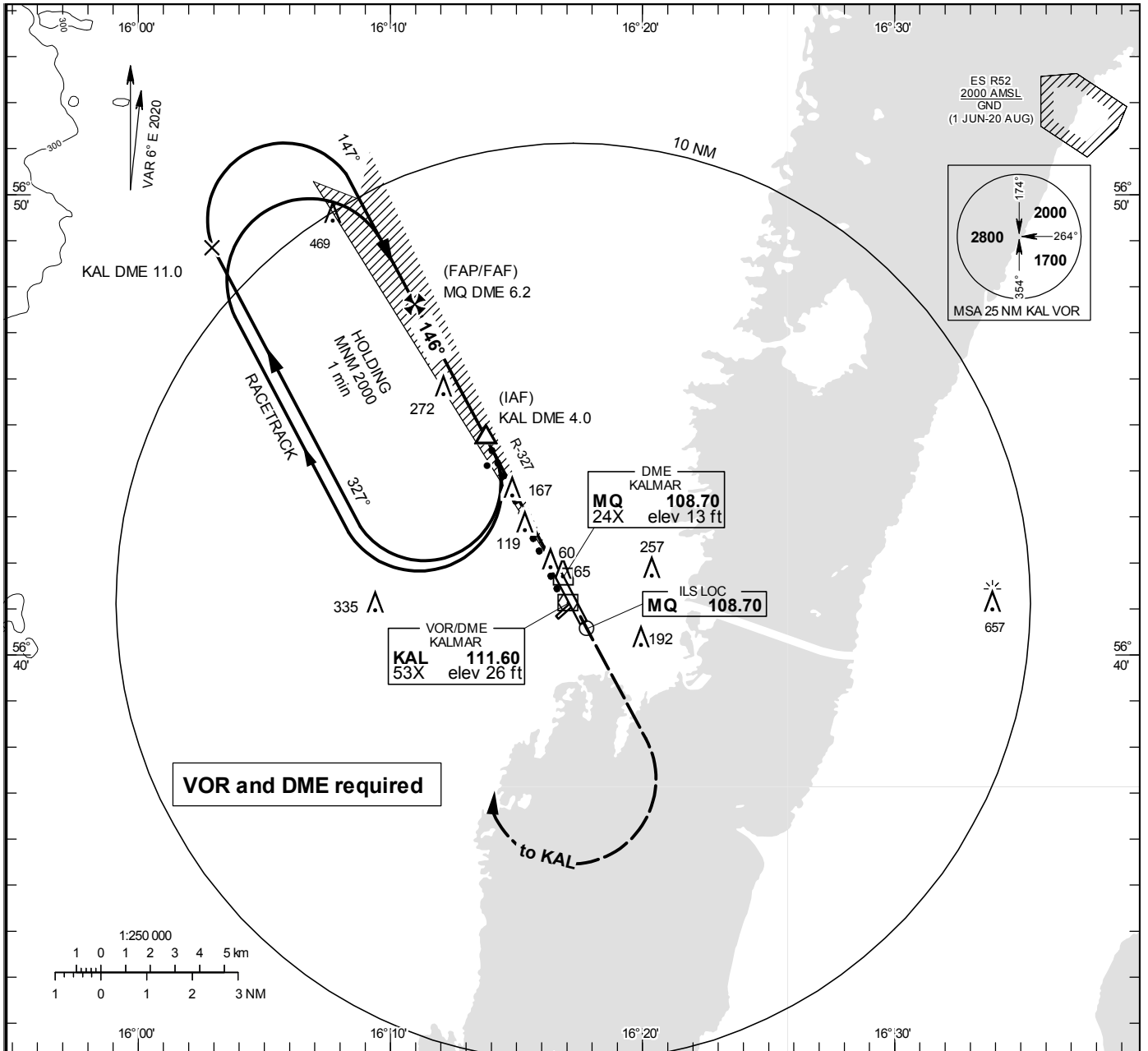


**INSTRUMENT
APPROACH
CHART – ICAO**

THR ELEV 18.0 ft, AD ELEV 18 ft
 OCH are related to THR.
 Circling OCH are related to AD ELEV.
 BRG are MAG
 ALT, HGT and ELEV in ft.

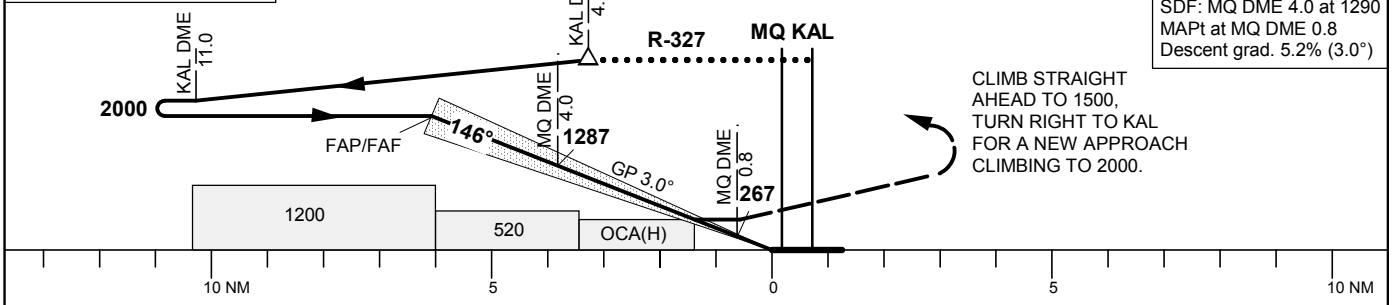
KALMAR TOWER 130.805

ILS or LOC RWY 16



TA 5000 ft AMSL RDH 50.2 ft Circling MAX IAS 200 kt *Timing not authorized for defining the MAPt

OM replaced by MQ DME 4.0
 MM replaced by MQ DME 0.8



OCA (H)					Final approach	LOC Distance FAF-MAPt 5.4 NM*							
Cat of ACFT	A	B	C	D	DME MQ NM	6	5	4	3	2			
Straight-in Approach	CAT I	164(146)	173(155)	183(165)	195(177)	ALT	1920	1610	1290	970	650		
	LOC	420(410)				GS	kt	80	100	120	140	160	180
Circling		490(480)	560(550)	730(720)	730(720)	Time	min:s	4:05	3:16	2:43	2:20	2:02	1:49
						Rate of descent	ft/min	425	530	635	745	850	955