

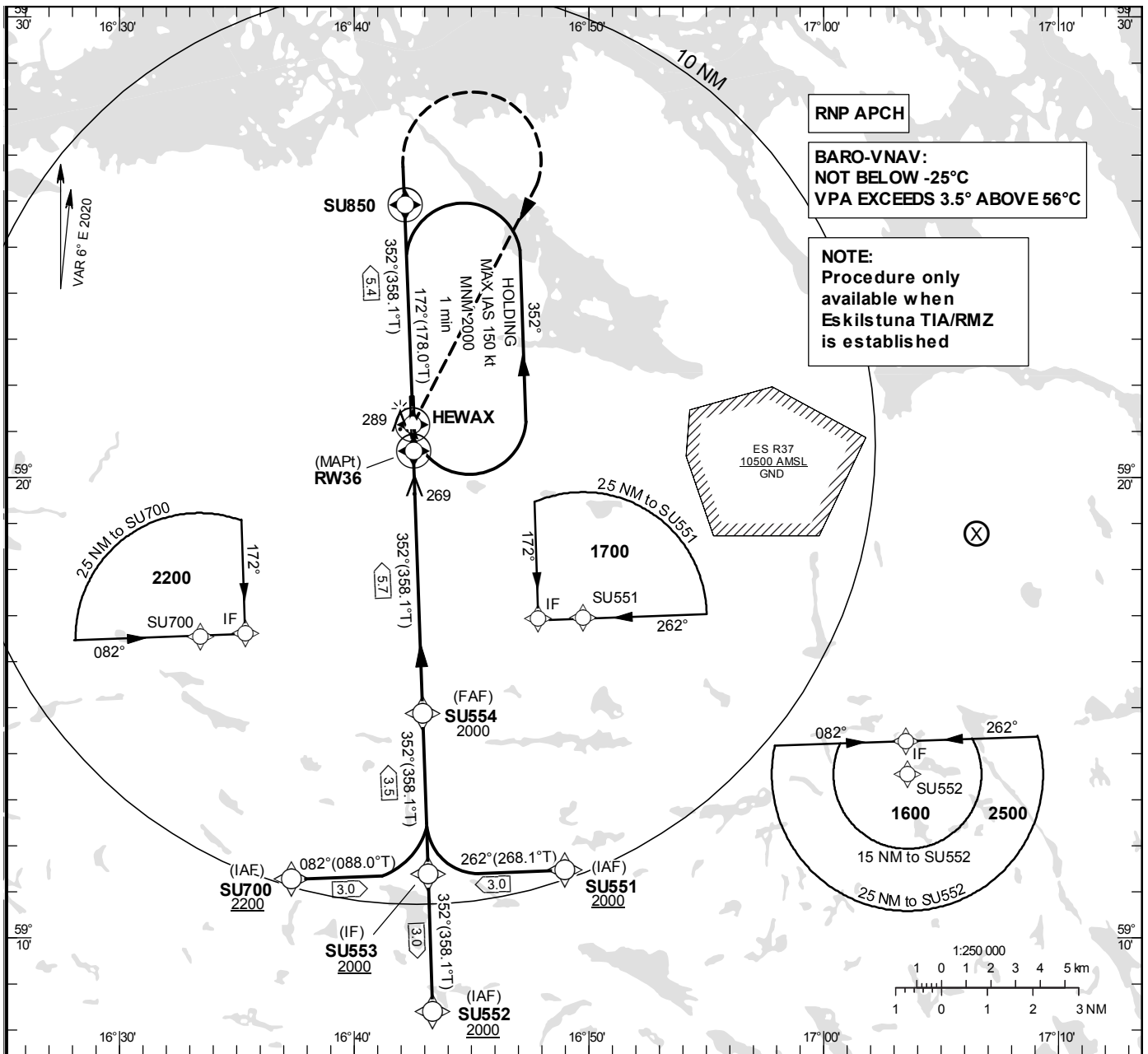
**INSTRUMENT
APPROACH
CHART – ICAO**

THR ELEV 130.4 ft, AD ELEV 140 ft
 OCH are related to THR.
 BRG are MAG (True).
 ALT, HGT and ELEV in ft.

ESKILSTUNA
 INFORMATION 126.855

RNP RWY 36

EGNOS Ch 77384 E 36A



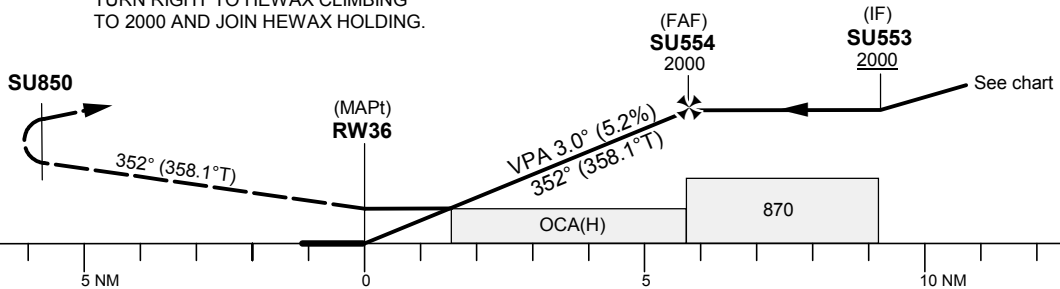
RNP APCH

**BARO-VNAV:
 NOT BELOW -25°C
 VPA EXCEEDS 3.5° ABOVE 56°C**

**NOTE:
 Procedure only
 available when
 Eskilstuna TIA/RMZ
 is established**

TA 5000 ft AMSL RDH 51 ft

CLIMB STRAIGHT AHEAD TO SU850,
 TURN RIGHT TO HEWAX CLIMBING
 TO 2000 AND JOIN HEWAX HOLDING.



| Cat of ACFT | OCA (H) | | Final approach Dist to RW36 | Distance FAF-MAPt 5.7 NM | | | | | | | |
|-------------|----------|----------|--------------------------------|--------------------------|------|------|-----|-----|-----|-----|-----|
| | A | B | | 5 | 4 | 3 | 2 | | | | |
| LPV | 477(347) | 489(359) | ALT | 1770 | 1450 | 1140 | 820 | | | | |
| LNAV/VNAV | 477(347) | 489(359) | GS | kt | 70 | 80 | 90 | 100 | 110 | 120 | 130 |
| LNAV | 600(470) | | Rate of descent | ft/min | 370 | 425 | 480 | 530 | 585 | 635 | 690 |

RNP RWY 36 via SU551

| Path Desc | Waypoint Identifier | Fly-over | Course °M(°T) | Dist (NM) | Turn Dir | Altitude | Speed | VPA/RDH | Rec Navaid | Navigation Specification |
|-----------|---------------------|----------|---------------|-----------|----------|----------|-------|---------|------------|--------------------------|
| IF | SU551 | - | - | - | - | +2000 | - | - | - | RNP APCH |
| TF | SU553 | - | 262°(268.1°) | 3.0 | - | +2000 | - | - | - | RNP APCH |

RNP RWY 36 via SU700

| Path Desc | Waypoint Identifier | Fly-over | Course °M(°T) | Dist (NM) | Turn Dir | Altitude | Speed | VPA/RDH | Rec Navaid | Navigation Specification |
|-----------|---------------------|----------|---------------|-----------|----------|----------|-------|---------|------------|--------------------------|
| IF | SU700 | - | - | - | - | +2200 | - | - | - | RNP APCH |
| TF | SU553 | - | 082°(088.0°) | 3.0 | - | +2000 | - | - | - | RNP APCH |

RNP RWY 36 via SU552

| Path Desc | Waypoint Identifier | Fly-over | Course °M(°T) | Dist (NM) | Turn Dir | Altitude | Speed | VPA/RDH | Rec Navaid | Navigation Specification |
|-----------|---------------------|----------|---------------|-----------|----------|----------|-------|---------|------------|--------------------------|
| IF | SU552 | - | - | - | - | +2000 | - | - | - | RNP APCH |
| TF | SU553 | - | 352°(358.1°) | 3.0 | - | +2000 | - | - | - | RNP APCH |

| Path Desc | Waypoint Identifier | Fly-over | Course °M(°T) | Dist (NM) | Turn Dir | Altitude | Speed | VPA/RDH | Rec Navaid | Navigation Specification |
|-----------|---------------------|----------|---------------|-----------|----------|----------|-------|---------|------------|--------------------------|
| IF | SU553 | - | - | - | - | +2000 | - | - | - | RNP APCH |
| TF | SU554 | - | 352°(358.1°) | 3.5 | - | @2000 | - | - | - | RNP APCH |
| TF | RW36 | Y | 352°(358.1°) | 5.7 | - | @181 | - | -3.0/50 | - | RNP APCH |
| TF | SU850 | Y | 352°(358.1°) | 5.4 | - | - | - | - | - | RNP APCH |
| DF | HEWAX | Y | - | - | R | - | - | - | - | RNP APCH |

ESSU Holding HEWAX

| Path Desc | Waypoint Identifier | Fly-over | Course °M(°T) | Dist (NM) | Turn Dir | Altitude | Speed | VPA/RDH | Rec Navaid | Navigation Specification |
|-----------|---------------------|----------|---------------|-----------|----------|----------|-------|---------|------------|--------------------------|
| HM | HEWAX | Y | 172°(178.0°) | - | L | +2000 | -150 | - | - | RNP 1 |

FAS Data Block

RNP RWY 36

Input data

| | |
|-------------------------------------|---------------|
| Operation Type | 0 |
| SBAS Provider | 1 (EGNOS) |
| Airport Identifier | ESSU |
| Runway | 36 |
| Runway Letter | 0 (None) |
| Approach Performance Designator | 0 |
| Route Indicator | |
| Reference Path Data Selector | 0 |
| Reference Path Identifier | E36A |
| LTP/FTP Latitude | 592033.4240N |
| LTP/FTP Longitude | 0164232.2805E |
| LTP/FTP Ellipsoidal Height (metres) | 65.5 |
| FPAP Latitude | 592134.3390N |
| Delta FPAP Latitude (seconds) | 60.9150 |
| FPAP Longitude | 0164228.2135E |
| Delta FPAP Longitude (seconds) | -4.0670 |
| Threshold Crossing Height | 51.0 |
| TCH Units Selector | 0 (feet) |
| Glidepath Angle (degrees) | 3.00 |
| Course Width (metres) | 105.00 |
| Length Offset (metres) | 0 |
| HAL (metres) | 40.0 |
| VAL (metres) | 50.0 |

Output data

| | |
|----------------------|--|
| Data Block | 10 15 13 13 05 24 00 00 01 36 33 05 20 93 77 19 B1 B3 2B 07 8F 16 E6 DB 01 3A E0 FF FE 01 2C 01 64 00 C8 FA C8 81 83 7D |
| Calculated CRC Value | C881837D |
| Supplied CRC Value | C881837D |
| Comparison Result | OK |

Required Additional Data

| | |
|-------------------------------------|------|
| ICAO Code | ES |
| LTP/FTP Orthometric Height (metres) | 39.8 |