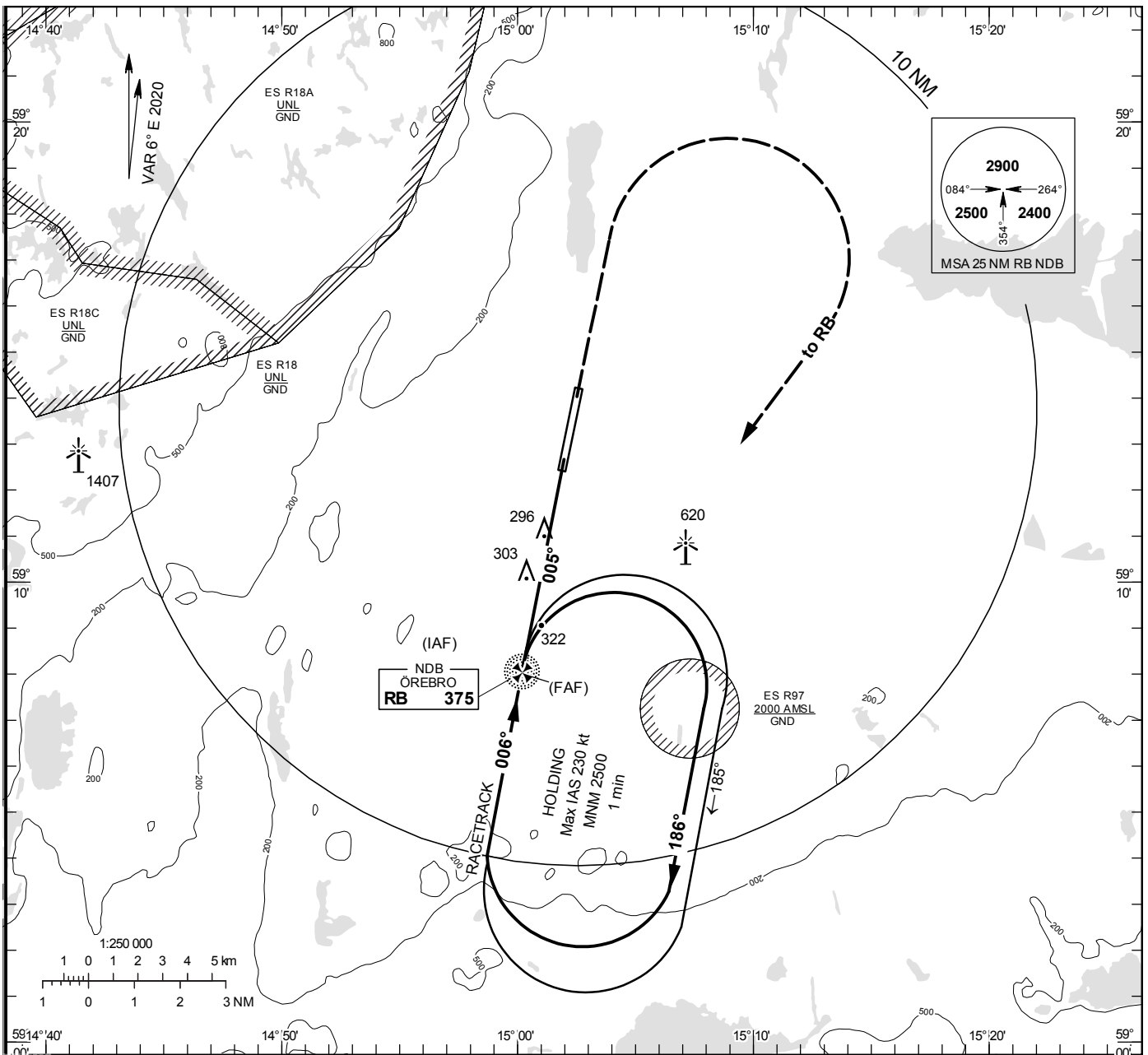


**INSTRUMENT  
APPROACH  
CHART – ICAO**

**THR ELEV 161.3 ft, AD ELEV 192 ft**  
 OCH are related to THR.  
 Circling OCH are related to AD ELEV.  
 BRG are MAG  
 ALT. HGT and ELEV in ft.

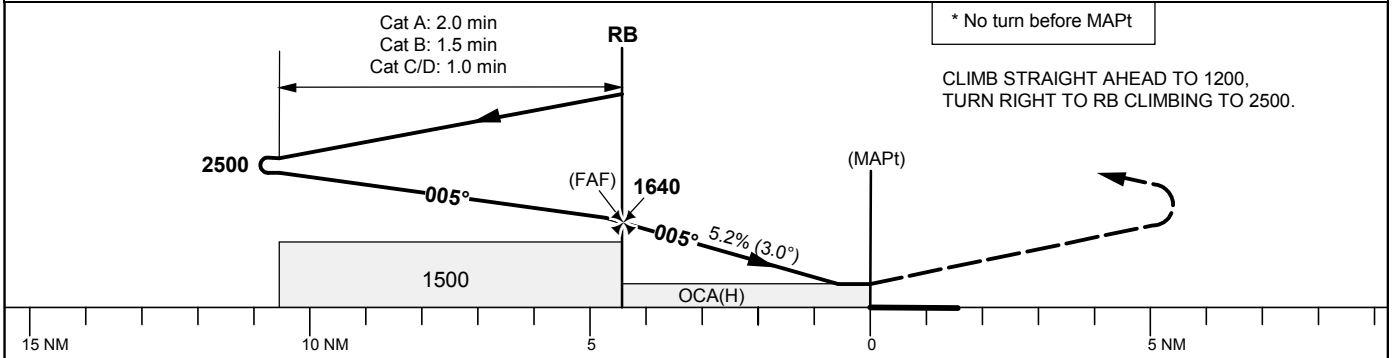
ÖREBRO TOWER 120.280

**NDB RWY 01**



**TA 5000 ft AMSL**

Final APCH line 1° offset



Cat of ACFT	OCA (H)				Final approach	Distance FAF-MAPt 4.5 NM*						
	A	B	C	D		6	5	4	3			
Straight-in Approach	570 (410)				ALT	1620	1300	980	660			
Circling	600 (410)	690 (500)	1020 (830)		GS	kt	80	100	120	140	160	180
					Time	min:s	3:23	2:42	2:15	1:56	1:41	1:30
					Rate of descent	ft/min	425	535	635	745	850	955