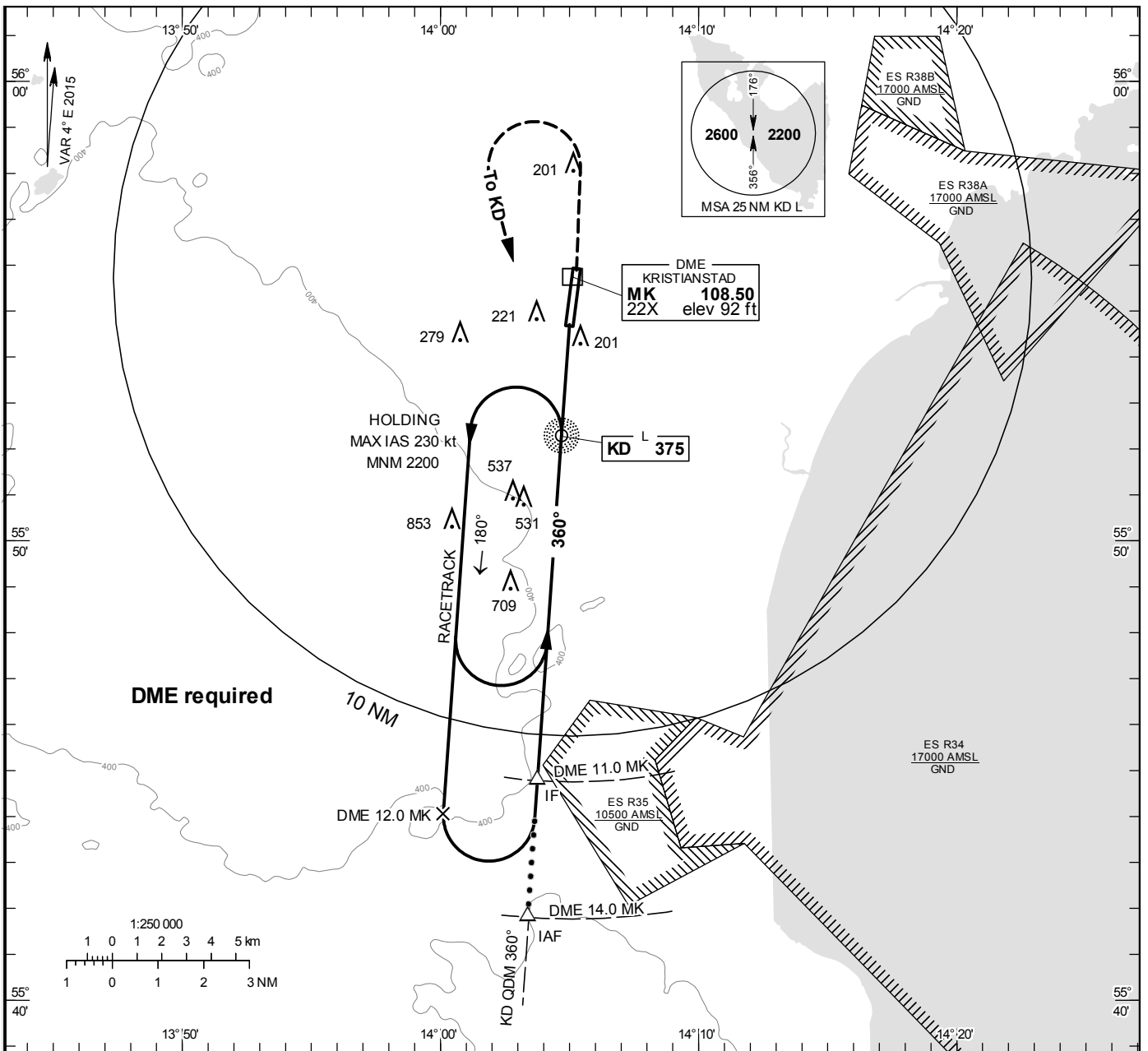


**INSTRUMENT APPROACH CHART - ICAO**

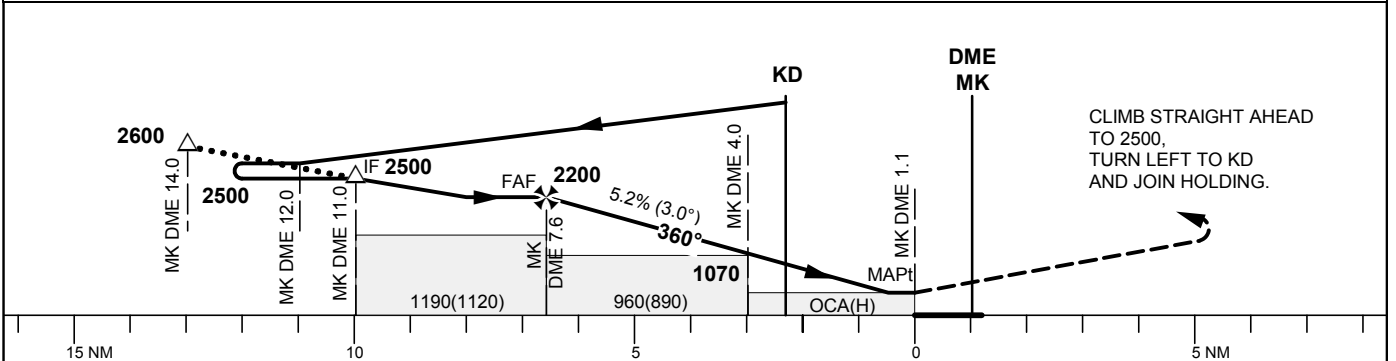
**THR ELEV 76 ft, AD ELEV 76 ft**  
 OCH are related to THR.  
 Circling OCH are related to AD ELEV.  
 BRG are MAG  
 ALT. HGT and ELEV in ft.

KRISTIANSTAD TOWER 129.350

**NDB RWY 01 KRISTIANSTAD**



TA 5000 ft AMSL PAPI 5.2% Final APCH line offset 3°



Cat of ACFT	OCA (H)				Final approach Distance FAF-MAPt 6.5 NM							
	A	B	C	D	DME MK NM	7	6	5	4	3		
Straight-in Approach	470 (400)				ALT (HGT)	2020 (1950)	1700 (1630)	1380 (1310)	1070 (1000)	750 (680)		
	960 (890)				GS	kt	80	100	120	140	160	180
Circling	520 (450)	580 (510)	940 (870)	1500(1430)	Time	min:s	4:53	3:54	3:15	2:47	2:26	2:10
Circling E RWY	500 (430)	500 (430)	930 (860)	930 (860)	Rate of descent	ft/min	425	530	635	740	845	950