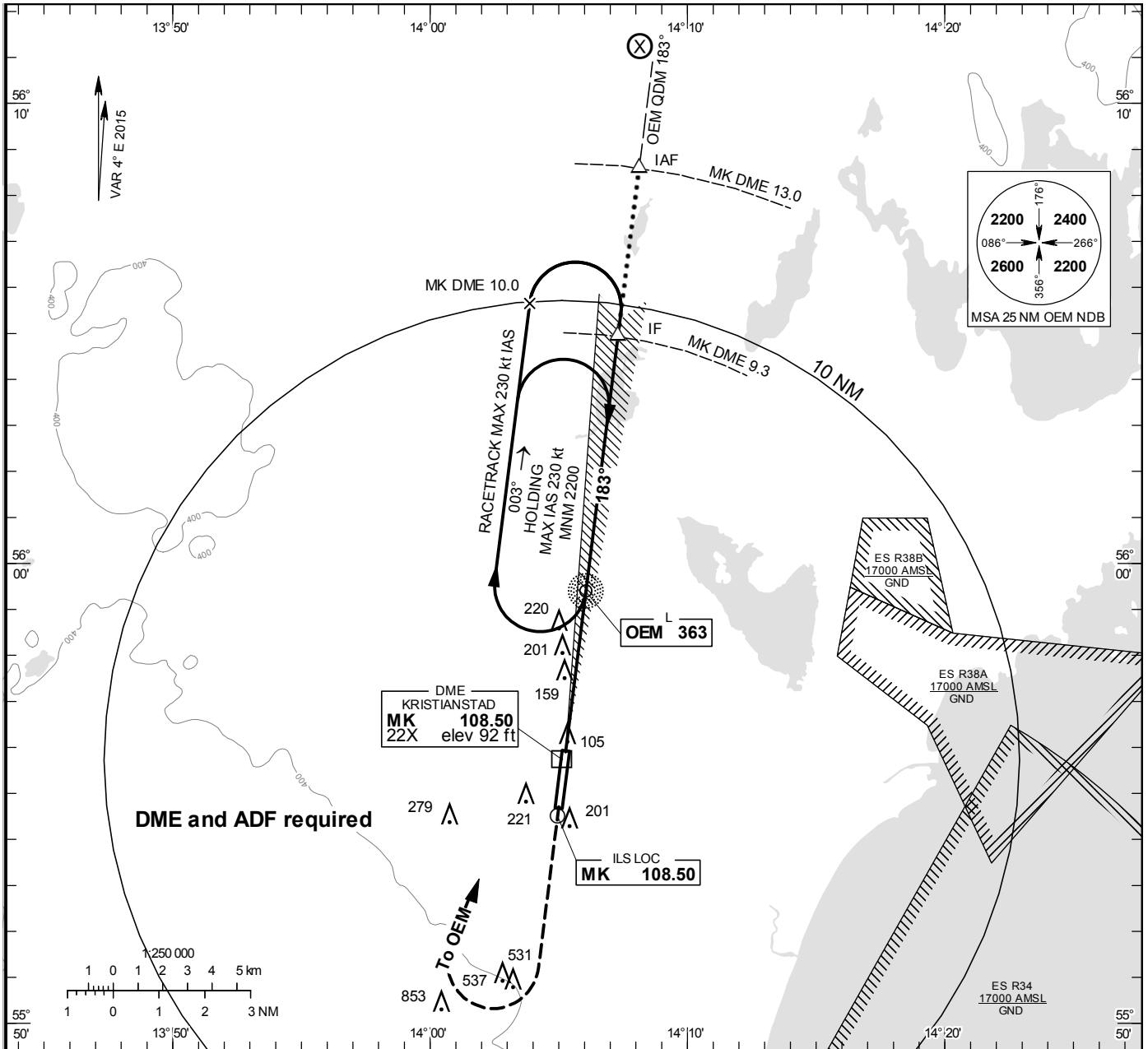


**INSTRUMENT APPROACH CHART - ICAO**

**THR ELEV 73.3 ft, AD ELEV 76 ft**  
 OCH are related to THR.  
 Circling OCH are related to AD ELEV.  
 BRG are MAG  
 ALT. HGT and ELEV in ft.

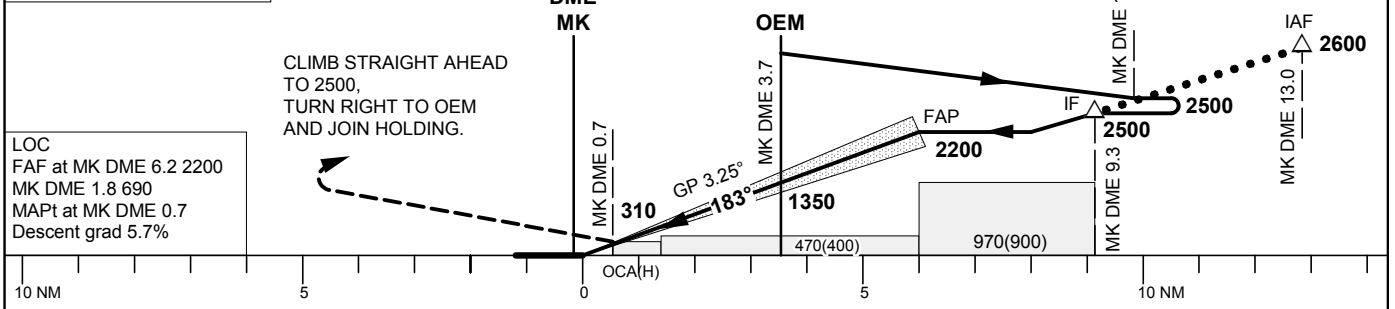
KRISTIANSTAD TOWER 129.350

**ILS or LOC RWY 19**  
 KRISTIANSTAD



**TA 5000 ft AMSL** RDH 51.8 ft PAPI 5.7% \* Timing not authorized for defining the MAPt

OM REPLACED BY DME 3.7  
 MM REPLACED BY DME 0.7



OCA (H)					Final approach LOC Distance FAF-MAPt 5.5 NM*								
Cat of ACFT	A	B	C	D	DME MK NM	6	5	4	3	2	1		
Straight-in Approach	CAT	223 (150)	230 (157)	241 (168)	251 (178)	ALT (HGT)	2140(2070)	1800(1730)	1450(1380)	1100(1040)	760(690)	420(350)	
	LOC	410 (340)				GS	kt	80	100	120	140	160	180
	LOC without SDF	470 (400)				Time	min:s	4:07	3:17	2:44	2:21	2:03	1:50
Circling	520 (450)	580 (510)	940 (870)	1500(1430)	Rate of descent	ft/min	465	580	695	810	925	1040	
Circling E RWY	500 (430)	500 (430)	930 (860)	930 (860)									