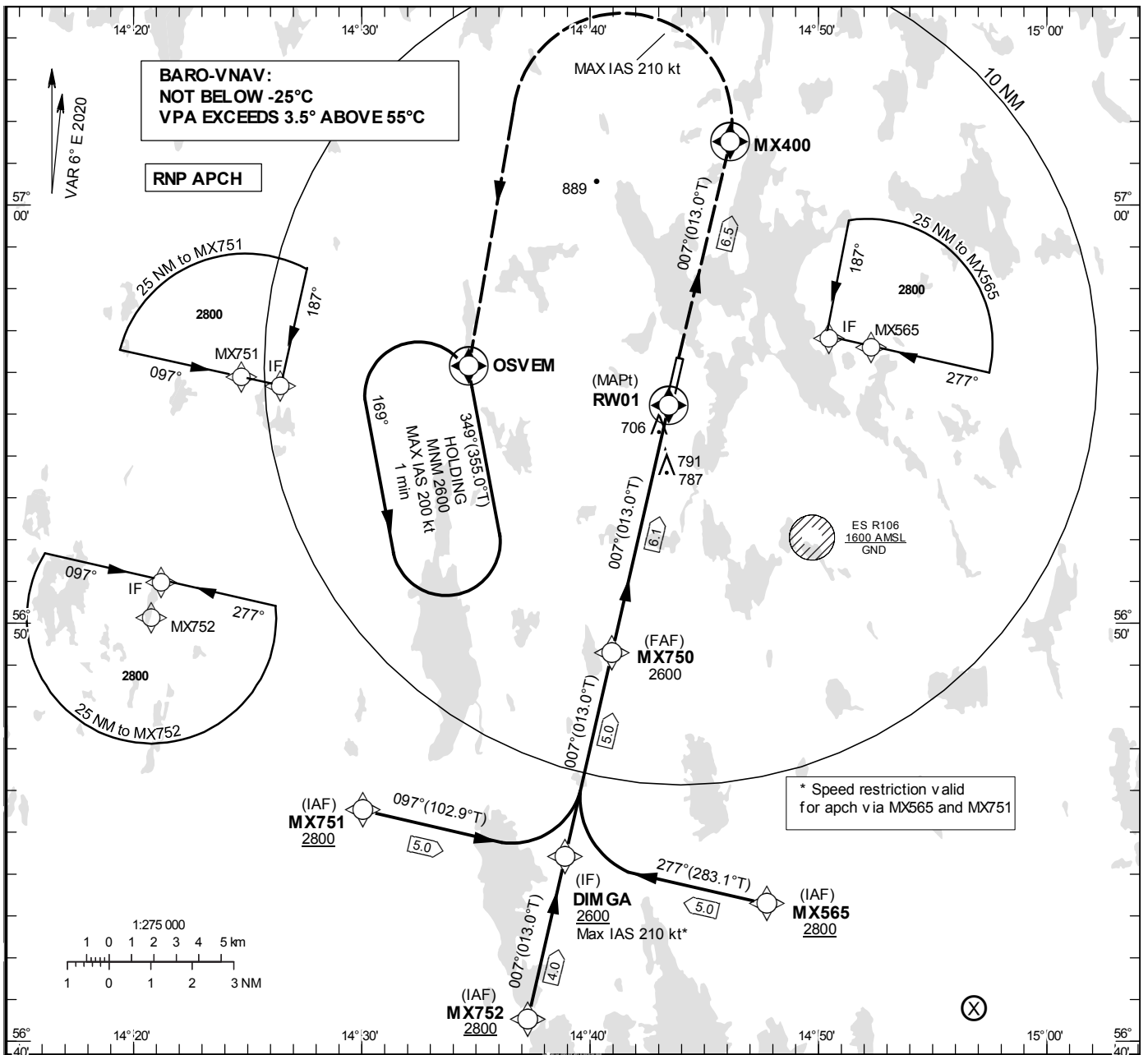


**INSTRUMENT APPROACH CHART – ICAO**  
**THR ELEV 610 ft, AD ELEV 610 ft**  
 OCH are related to THR.  
 BRG are MAG (True).  
 ALT, HGT and ELEV in ft.

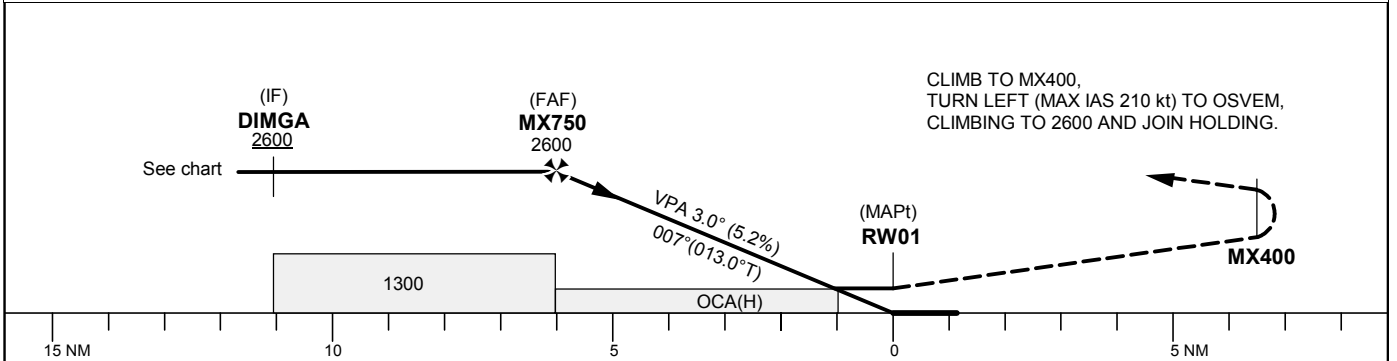
KRONOBERG TOWER 118.155

RNP RWY 01

EGNOS Ch 48466 E 01A



TA 5000 ft AMSL RDH 50.0 ft



Cat of ACFT	OCA (H)				Final approach Dist to RWY01 (NM)	Distance FAF-MAPt 6.1 NM						
	A	B	C	D		6	5	4	3	2		
LPV	836 (226)	848 (238)	857 (247)	867 (257)	ALT	2570	2250	1930	1620	1300		
LNAV/VNAV	918 (308)	930 (320)	938 (328)	948 (338)	GS	kt	80	100	120	140	160	180
LNAV	1040 (430)				Rate of descent	ft/min	425	530	635	745	850	955
Circling	1090 (480)	1110 (500)	1240 (630)	1290 (680)								

## RNP RWY 01 via MX751

Path Desc	Waypoint Identifier	Fly-over	Course °M(°T)	Dist (NM)	Turn Dir	Altitude	Speed	VPA/RDH	Rec Navaid	Navigation Specification
IF	MX751	-	-	-	-	+2800	-	-	-	RNP APCH
TF	DIMGGA	-	097°(102.9°)	5.0	-	+2600	-210	-	-	RNP APCH

## RNP RWY 01 via MX752

Path Desc	Waypoint Identifier	Fly-over	Course °M(°T)	Dist (NM)	Turn Dir	Altitude	Speed	VPA/RDH	Rec Navaid	Navigation Specification
IF	MX752	-	-	-	-	+2800	-	-	-	RNP APCH
TF	DIMGGA	-	007°(013.0°)	4.0	-	+2600	-	-	-	RNP APCH

## RNP RWY 01 via MX565

Path Desc	Waypoint Identifier	Fly-over	Course °M(°T)	Dist (NM)	Turn Dir	Altitude	Speed	VPA/RDH	Rec Navaid	Navigation Specification
IF	MX565	-	-	-	-	+2800	-	-	-	RNP APCH
TF	DIMGGA	-	277°(283.1°)	5.0	-	+2600	-210	-	-	RNP APCH

Path Desc	Waypoint Identifier	Fly-over	Course °M(°T)	Dist (NM)	Turn Dir	Altitude	Speed	VPA/RDH	Rec Navaid	Navigation Specification
IF	DIMGGA	-	-	-	-	+2600	-	-	-	RNP APCH
TF	MX750	-	007°(013.0°)	5.0	-	@2600	-	-	-	RNP APCH
TF	RW01	Y	007°(013.0°)	6.1	-	@660	-	-3.0/50	-	RNP APCH
TF	MX400	Y	007°(013.0°)	6.5	-	-	-	-	-	RNP APCH
DF	OSVEM	Y	-	-	L	+2600	-210	-	-	RNP APCH

## ESMX Holding OSVEM

Path Desc	Waypoint Identifier	Fly-over	Course °M(°T)	Dist (NM)	Turn Dir	Altitude	Speed	VPA/RDH	Rec Navaid	Navigation Specification
HM	OSVEM	Y	349°(355.0°)	-	L	+2600	-200	-	-	RNP 1

## FAS Data Block

## RNP RWY 01

## Input data

Operation Type	0
SBAS Provider	1 (EGNOS)
Airport Identifier	ESMX
Runway	01
Runway Letter	0 (None)
Approach Performance Designator	0
Route Indicator	
Reference Path Data Selector	0
Reference Path Identifier	E01A
LTP/FTP Latitude	565511.7155N
LTP/FTP Longitude	0144326.6935E
LTP/FTP Ellipsoidal Height (metres)	218.8
FPAP Latitude	565618.0505N
Delta FPAP Latitude (seconds)	66.3350
FPAP Longitude	0144354.8175E
Delta FPAP Longitude (seconds)	28.1240
Threshold Crossing Height	50.0
TCH Units Selector	0 (feet)
Glidepath Angle (degrees)	3.00
Course Width (metres)	105.00
Length Offset (metres)	0
HAL (metres)	40.0
VAL (metres)	50.0

## Output data

Data Block	10 18 0D 13 05 01 00 00 01 31 30 05 C7 68 6D 18 CB A2 51 06 8C 1C 3E 06 02 B8 DB 00 F4 01 2C 01 64 00 C8 FA 30 D9 CC 52
Calculated CRC Value	30D9CC52

## Required Additional Data

ICAO Code	ES
LTP/FTP Orthometric Height (metres)	186.0